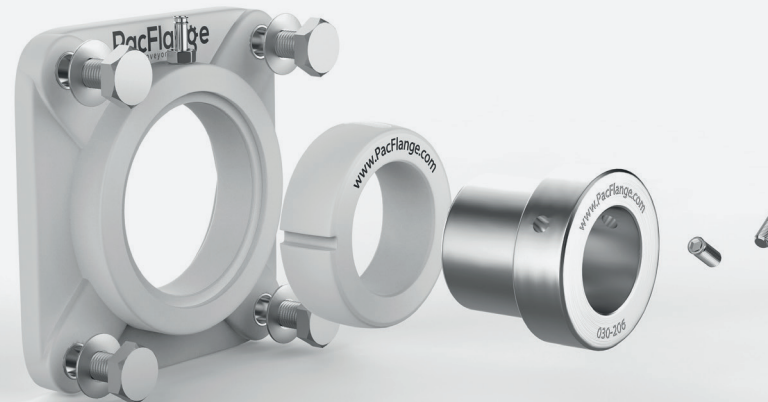
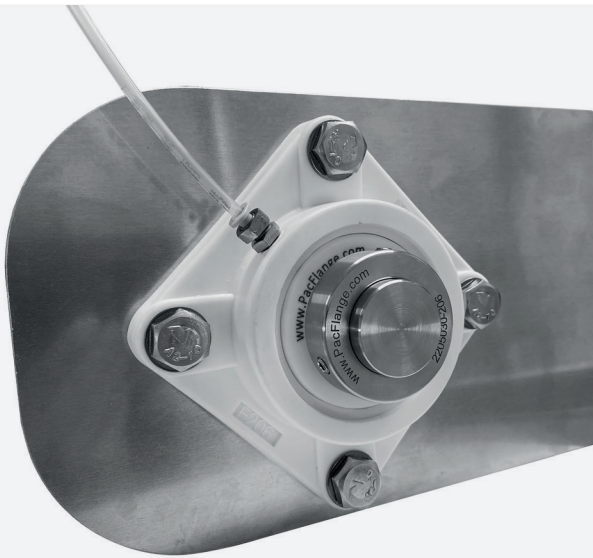


THE WORLD'S FIRST WATER LUBRICATED FOOD GRADE CONVEYOR BELT BEARING



“

PacFlange Excels in Water and Wet Environments

“

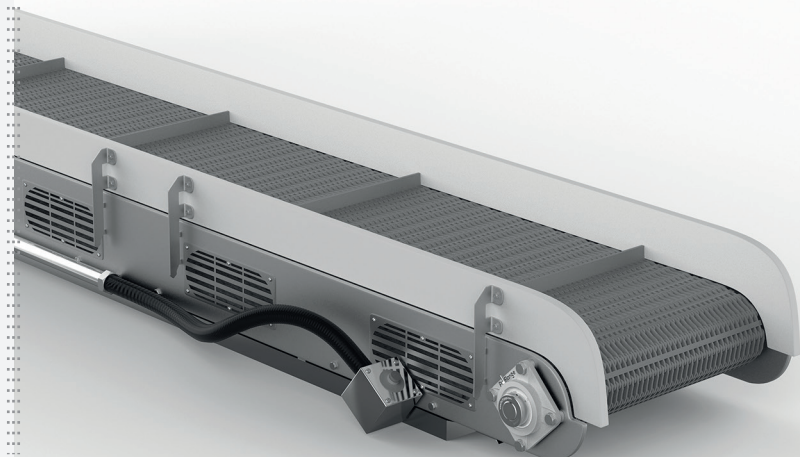
High Grade Stainless Steel Components

New PacFlange Water Lubricated Version

- Significant increase in load carrying capacity
- Improved Bush design
- Improved Stainless Sleeve design
- Water delivery locking bolt
- Environmentally Friendly Packaging
- Compatible with Salt or Fresh Water

PacFlange Features

- Longer Life in Wet Environments
- Maintenance-Free
- Grease-Free
- Dry Operation or Water Lubricated
- High Grade 2205 Stainless Sleeve
- Gradual Wear Enabling Planned Replacement
- Thordon Engineered Thermoplastic Bush



DYNAMIC LOAD RATINGS

The below table shows how much load can be directly applied on one bearing at various shaft speeds. *If one shaft has two bearings, the applied load should be twice the specified value for a particular RPM.* If the shaft size is unknown, use the housing size to find the load at the specific RPM.

Shaft dia. (d)		HOUSING SIZE	10 RPM		20 RPM		30 RPM		40 RPM		50 RPM		60 RPM	
mm	inch		DRY (Kg)	WATER (Kg)	DRY (Kg)	WATER (Kg)	DRY (Kg)	WATER (Kg)	DRY (Kg)	WATER (Kg)	DRY (Kg)	WATER (Kg)	DRY (Kg)	WATER (Kg)
20	3/4	204	218	655	113	338	74	223	55	165	44	132	37	112
25	1	205	246	739	123	370	84	251	62	186	50	149	40	119
30	1 1/8 1 1/4	206	267	802	130	391	87	262	65	195	52	157	43	130
35	1 1/4 1 3/8	207	276	828	138	414	92	276	69	206	55	165	46	137
40	1 1/2	208	298	894	152	455	100	300	75	224	60	180	50	150
45	1 3/4	209	318	954	156	469	105	314	79	236	63	188	52	157
50	2	210	319	957	157	470	105	315	79	236	63	188	52	157
55	2	211	355	1066	178	533	118	355	88	264	70	211	59	177
60	2 1/4	212	370	1109	182	546	122	365	92	276	73	219	61	183
65	2 1/2	213	380	1139	190	569	127	380	95	284	76	228	63	190
70	2 1/2	214	389	1168	197	591	130	391	98	294	79	236	65	196
75	3	215	408	1223	204	611	135	404	101	304	81	243	67	201

*Applications with shaft speeds over 60 RPM need to be reviewed by PacFlange Engineering, please contact your local dealer or email us at sales@pacflange.com