



COMPLETE SOLUTIONS FOR WIND ENERGY

Preferred Wind Turbine Service Partner

Australian owned company keeping the wind industry moving

More than 10 years contributing to sustainable development
through our products and services for the wind industry Australia wide.

**REPAIR WORKSHOPS NETWORK
SPARE PARTS & SUPPLY MANAGEMENT
MAINTENANCE**



WIND CAPABILITIES

- Dedicated SWB wind team
- Major components projects
- OEM maintenance & repair solutions
- Main bearing inspections up tower
- Bearing failure analysis, RCA
- Engineering workshop services
- National spare parts management
 - bearings, seals, couplings, pitch bearings, grease
- Re-power project specialist
- Multi brand spare parts & service
- GWO mechanical engineering up tower services
- OEM main shaft repairs
- Workshop with 2x35T cranes
- HOVE lubrication

MECHANICAL MAJOR COMPONENTS PROJECTS

SERVICING & IMPROVING THE MECHANICAL DRIVE-TRAIN



RE-POWER SOLUTIONS FOR WIND ENERGY

- Major component projects
- Site survey
- Bearing specialist
- Component refurbishment
- Engineering support
- Main shaft inspection



SIEMENS Gamesa
RENEWABLE ENERGY

Vestas

SUZLON

GOLDWIND



GE Renewable Energy



Worley
energy | chemicals | resources

NORDEX

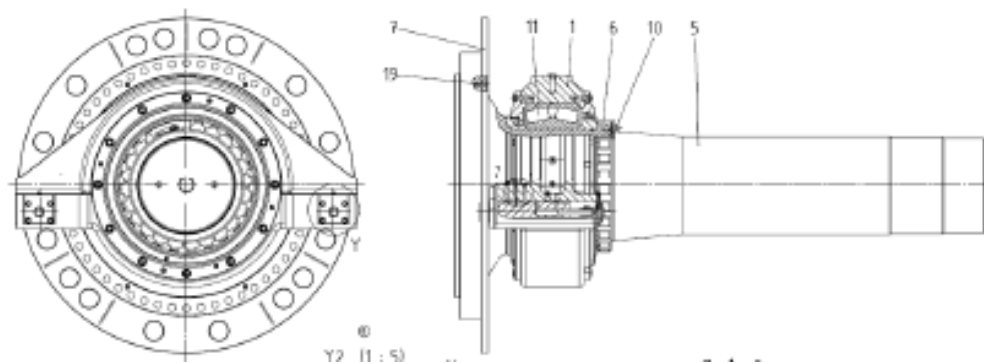
acciona
Windpower



WOOLNORTH
RENEWABLES



Meridian.



ON SITE SERVICES



1. Main bearing inspections
2. Main bearing re-greasing
3. Pitch bearing inspections
4. Lubrication system inspections & repairs
5. GWO approved technicians



MULTI-BRAND MAIN SHAFT REBUILDS

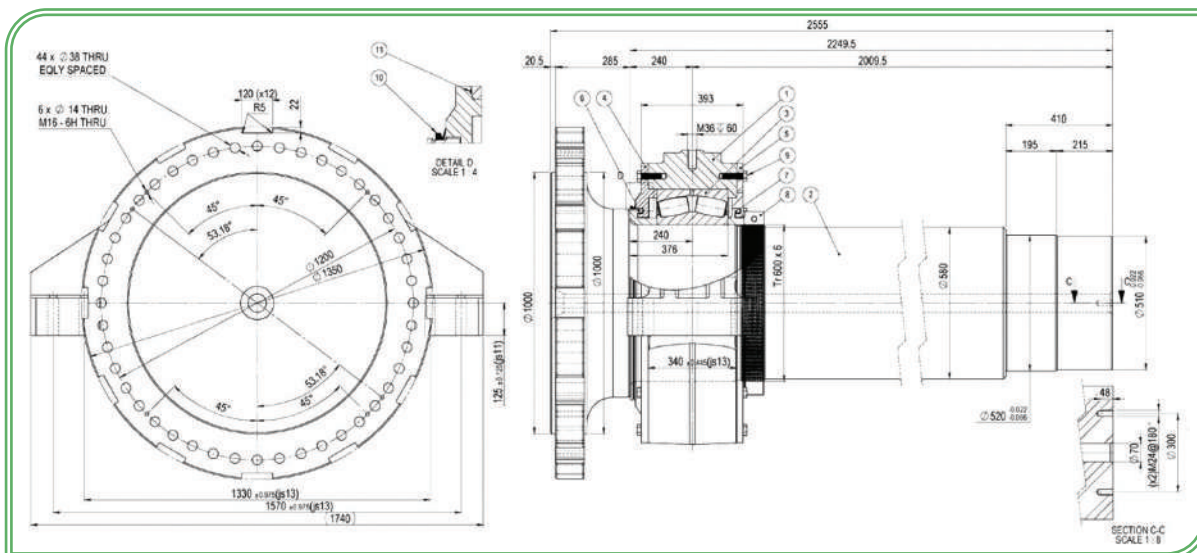
- FAG German made special bearings stocked
- Upgraded new FAG black oxide bearings with black oxide rollers
- Special clearance for longer life
- Emergency refurbish 2-3 weeks
- Standard 6 weeks
- RCA & engineering report
- Re-power services
- Transportation stands manufactured



OEM	WT MODEL
Senvion	MM82
Senvion	MM92
Neg Micon	NM64
Neg Micon	NM72
AN Bonus	AN Bonus 1.3MW
Enercon	E70
Senvion	3XM
Vestas	V66
Siemens	G132

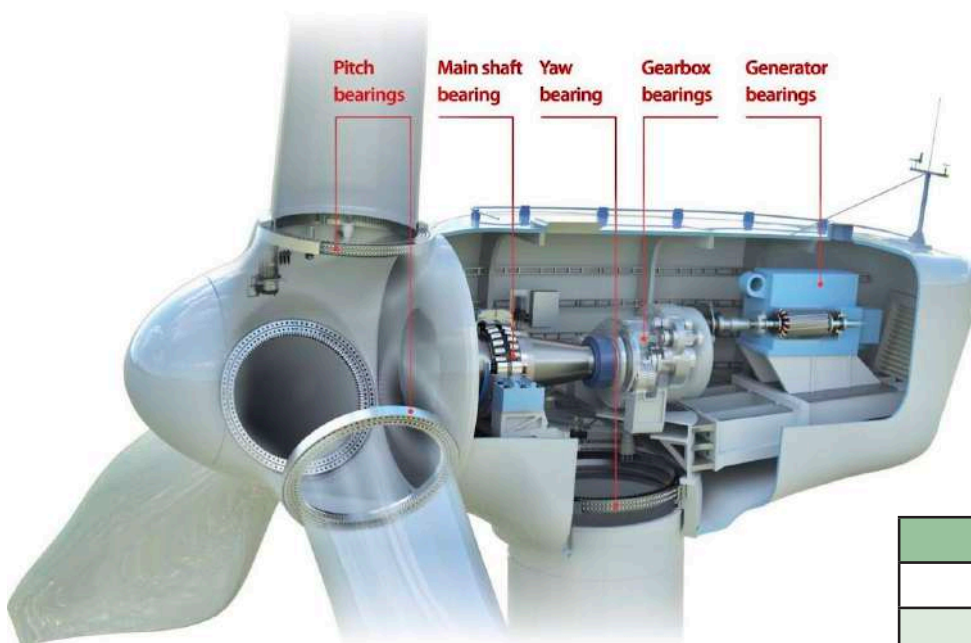
WIND BEARING SPECIALIST TEAM

- Engineer OEM bearing factory trained
- 35 years of experience in root cause analysis
- Recommend corrective actions
- Engineering solutions



OEM BEARINGS STOCKED

SCHAEFFLER **TIMKEN**
LIEBHERR
MOTION & CONTROL™
NSK **FAG** **IMO**



**Wind Turbine
Bearings**

- Main bearings provider
- Generator bearings
- Blade bearings
- Gearbox bearings

OEM	WT MODEL
Suzlon	S88
Senvion	MM82
Senvion	MM92
Neg Micon	NM64
Neg Micon	NM72
AN Bonus	AN Bonus 1.3MW
Enercon	E70
Senvion	3XM
Vestas	V66
Siemens	G132
Goldwind	G140
Acciona	AW1500

OEM BLADE BEARING STOCKED



IMO - Pitch Bearing spares you can trust on!



2-row 4-point contact ball pitch bearing
often used as spare part in original configuration in cases of

- fair wear and tear
- inadequate lubrication (excess wear)
- raceway corrosion (ingress of water)
- component failures (broken balls) & raceway issues (core crushing, surface fatigue & spalling, false brinelling)
- grease leakage

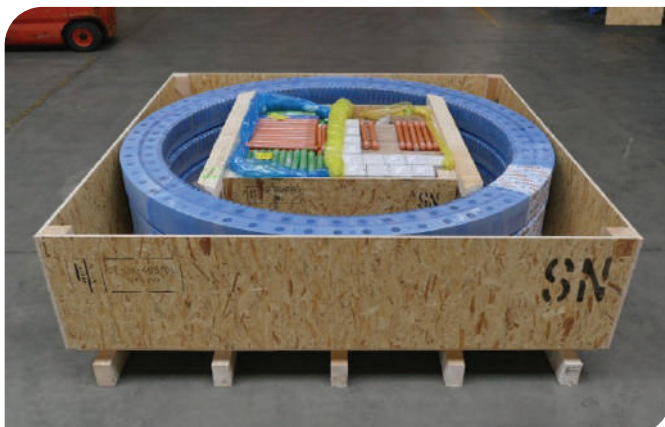
IMO pitch bearing spares include design and quality improvements to address these known failure modes to ensure it lasts longer than the original.



T-Solid – Smart retrofit kit for prematurely failing pitch bearings

Spare parts catalog - Wind turbine pitch bearing replacements

Wind turbine type	Lead time category		
	on stock ¹⁾	4-8 weeks from PO	12-18 weeks from PO
V47			
V80			
V82			
V90 / V100			
V110	T-Solid recommended		
S6x (S60, S62, S64, S66)			
S62			
S88 / S8X			
SWT 1.3			
SWT 2.3-93			
SWT 2.3-101/108/113/120			
SWT 3.0-101/108/113			
G47			
G8x			
G9X / G97			
G114 2.0	T-Solid recommended		
G114 2.5			
GE1.5x101sk			
GE1.5x101sk			
GE1.85-87	T-Solid first choice		
GE1.8-100/103	T-Solid first choice		
GE2.5-100, GE2.5x1	T-Solid first choice		
GE2.5-116/127	T-Solid first choice		
MD70/77			
MD80/82			
MM82			
MM82	T-Solid recommended		
MM100			
3.3M DF3G			
3.3M NES			
AW0000-125			T-Solid recommended
AW1500			
E 40/44/48			
E 66/70/82/92			
E 101/115			
E 126/138			
NM 54/72/82			



HOVE LUBRICATION



HOVE LUBRICATION SYSTEM

- Hove grease pumps
- Pumps serviced in Melbourne
- Contamination free
- OEM grease
- Stocked in Melbourne

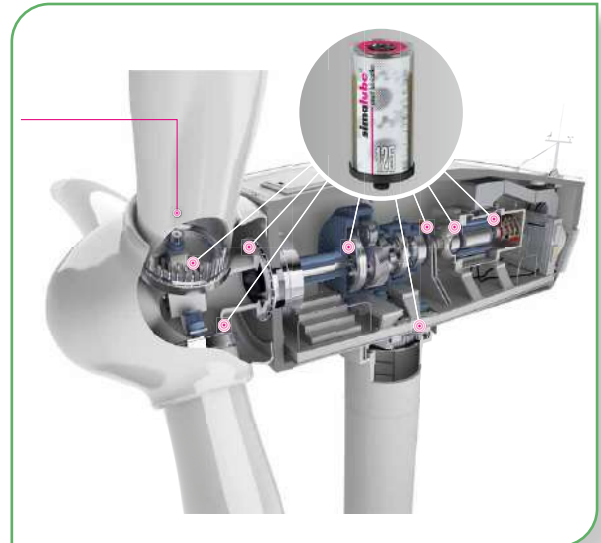
MULTI-BRAND LUBRICATION



MULTI-BRAND OEM SPARE PARTS

WIND SERVICE EQUIPMENT

- Bearing heaters
- Giebel Adsorbers for gearboxes
- OEM shaft alignment tools
- OEM main shaft transportation stands



simalube

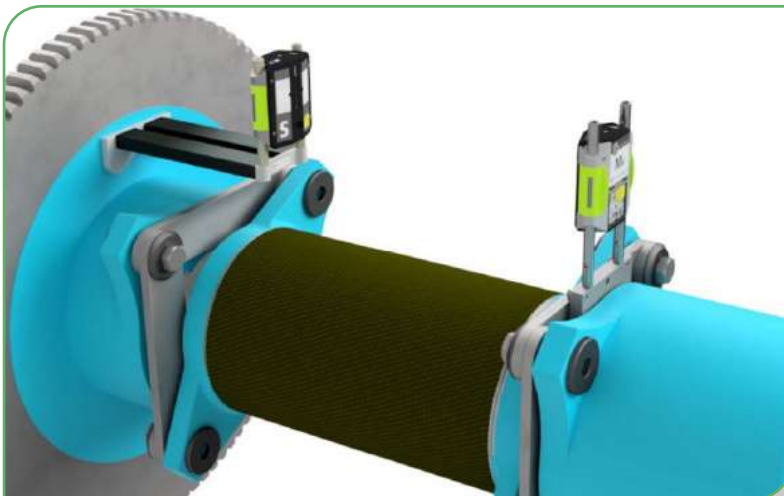
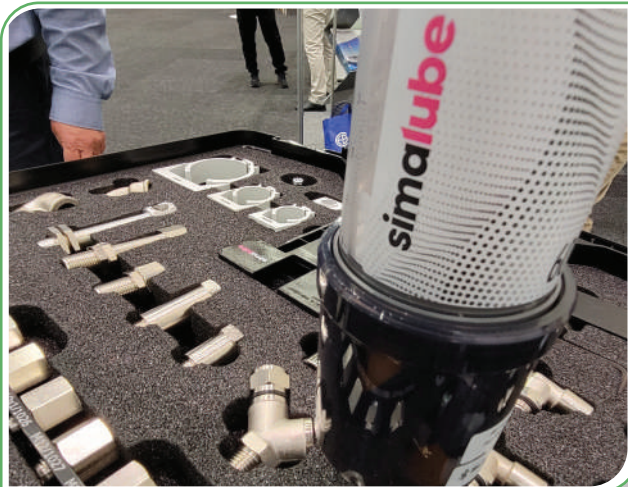


MULTI-BRAND OEM SPARE PARTS

Delo® XLC
Antifreeze/Coolant



Clariant Antifrogen® N Heat Transfer Fluids



MULTI-BRAND SPARE PARTS

Leading Edge Blade Protection

High-performance, fast curing system for leading edge repairs.

Easy to Apply

Cartridge packaging eases in-situ repair and is compatible with standard single component sealant/caulking guns.

Safe to Use

Low hazard and solvent-free. Cartridge format avoids the need to handle and mix individual components.

Wide Application window

Single product, suitable for use between 5-40 °C / 41-104 °F, and up to 85%RH.

Fast Cure

Rapid curing system which can be over coated in 30 minutes and is fully cured within 60 minutes at 20°C/68°F.

Long Working Life

Can be perfectly contoured, and removes the need for sanding therefore simplifying the application.

High Erosion Resistance

A combination of Belzona 5711 and Belzona 5721 can repair damage and offer long lasting protection against rain erosion and impact damage.



BKV BLADE MONITORING OVERVIEW



Brüel & Kjær Vibro
A member of the NSK Group

The three primary parts to our monitoring solution

HARDWARE

Powerful data processing – Advanced data acquisition and management

SOFTWARE

Extensive analysis – Wind park overview with in-depth diagnostics

1

2

3

SERVICE

Comprehensive 360° services – Dovetailing your expertise with ours

Our unparalleled track record:

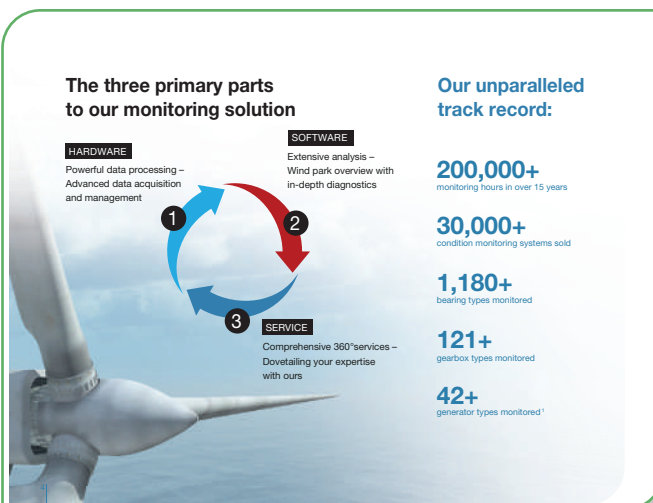
200,000+
monitoring hours in over 15 years

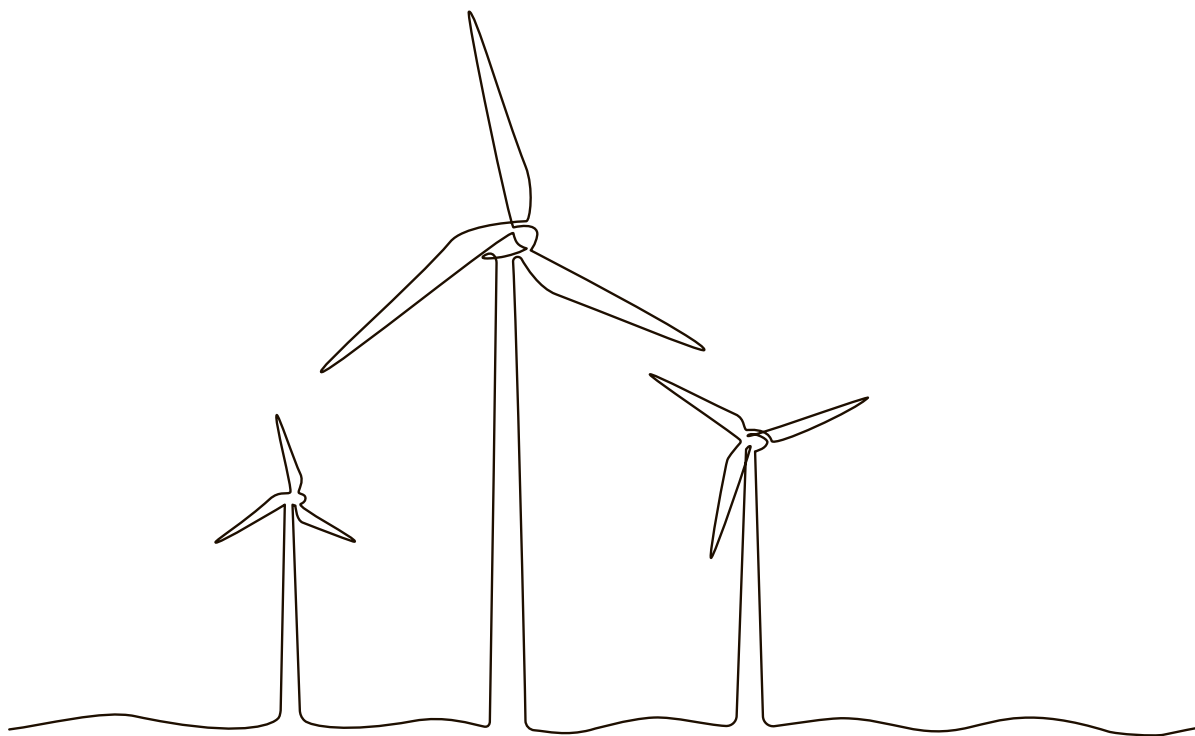
30,000+
condition monitoring systems sold

1,180+
bearing types monitored

121+
gearbox types monitored

42+
generator types monitored¹





- ✓ **PREFERRED WIND PARTNER**
- ✓ **OEM REPAIR SOLUTIONS**
- ✓ **BEARING SPECIALIST**
- ✓ **PROJECT MANAGEMENT**
- ✓ **MAIN SHAFT REFURBISHMENT**
- ✓ **WIND REPAIR WORKSHOP**
- ✓ **OEM BLADE BEARING UPGRADES**
- ✓ **50 YEARS AUSTRALIAN OWNED & OPERATED**

MULTI-BRAND OEM SPARE PARTS & REPAIRS

OEM YAW & PITCH BRAKES - NEW & REPAIRS



SVENDBORG BRAKES
A REGAL REYNOLD BRAND



FIRE SUPPRESSION SYSTEMS

FIRETRACE™
International

Firetrace's automatic fire suppression systems protect assets, employees, lost revenue, reputations, and the surrounding land and property.

Direct Release Systems

Direct Release System: the tubing nearest the hottest point of the fire ruptures, forming an effective discharge "nozzle." The agent contained in this cylinder is then released in the immediate proximity of the fire.

Indirect Release Systems

Indirect Release System: the Firetrace tubing is used only for detection. When a fire causes the tubing to burst, a valve opens and the extinguishing is discharged via a traditional distribution network and fixed nozzles.

Firetrace Detection Tubing

Firetrace Detection Tubing is ideal for fast, reliable detection of heat and flame even in the toughest applications.



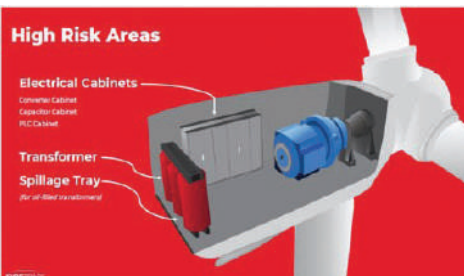
High Risk Areas

Electrical Cabinets

Control Cabinet
Capacitor Cabinet
RCCabinet

Transformer

Spillage Tray
(for oil filled transformer)



GROENEVELD-BEKA
LUBRICATION SYSTEMS BY TIMKEN



LUBRICATION PUMPS

- Main bearings
- Generator bearings
- Yaw / Pitch
- Repairs

WIND WORKSHOP REFURBISHMENTS



WIND WORKSHOP REFURBISHMENTS

- Yaw & Pitch gearboxes
- Cooling fans
- Generator shafts
- Automatic lubrication pumps
- Yaw & Pitch brakes
- Hove pumps
- Laser alignment tools
- Engineering inspection & fitting reports

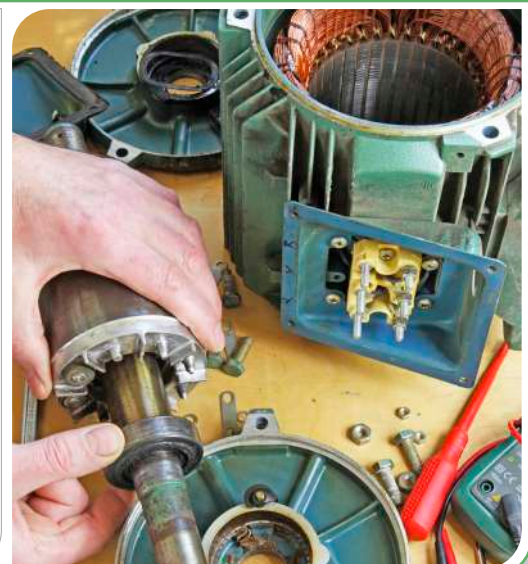


Bonfiglioli



- New
- Repair

**YAW & PITCH
GEARBOXES / MOTOR**



WIND CONTACT DETAILS

Email: wind@statewidebearings.com.au

Website: www.statewidebearings.com.au/wind

Phone: +61 (03) 8710 9777



WA	Kewdale WA (National H/Office) 67 Kewdale Road Kewdale WA 6105 Ph: (08) 9352 2200 Karratha Ph: (08) 9144 2333	Bunbury Bearings Ph: (08) 9721 3522 Bibra Lake Ph: (08) 9434 9555 Linear Head Office Ph: (08) 9475 5000	Albany Ph: (08) 9842 2488 Collie Ph: (08) 9734 1624 Naval Base Ph: (08) 9410 1800	Belmont Ph: (08) 9478 2444 Geraldton Ph: (08) 9964 4655 Wangara Ph: (08) 9303 6900	Bunbury Ph: (08) 9724 9100 Kalgoorlie Ph: (08) 9091 4111
QLD	Coopers Plains (State H/Office) 902 Beaudesert Road Coopers Plains QLD 4108 Ph: (07) 3717 4444	Coopers Plains Linear Ph: (07) 3717 4452 Virginia Ph: (07) 3265 2666	Cairns Ph: (07) 4035 1800 Rockhampton Ph: (07) 4927 2677	Gladstone Ph: (07) 4999 4450 Townsville Ph: (07) 4758 8855	Mackay Ph: (07) 4952 6660
NSW	Smithfield (State H/Office) Unit 2, 324 Woodpark Road Smithfield NSW 2164 Ph: (02) 9616 0000	Beresfield (Newcastle) Ph: (02) 4041 6444	Smithfield Linear dept Ph: (02) 9616 0066	Wollongong Ph: (02) 4272 2377	
VIC	Dandenong South (State H/O) 84 Greens Road Dandenong Sth VIC 3175 Ph: (03) 8710 9777	Dandenong South Linear Ph: (03) 9755 6044	Somerton Ph: (03) 9308 0055	Traralgon Ph: (03) 5172 3000	
TAS	Hobart 39 Sunderland Street Derwent Park TAS 7009 Ph: (03) 6216 6999	INDONESIA Ph: (62) 542 7031166	AUCKLAND NZ Ph: 09 964 0467		
SA	Wingfield 13 Streiff Road Wingfield SA 5013 Ph: (08) 8260 6299	Lonsdale Ph: (08) 8489 1600	Wingfield Linear dept Ph: (08) 8260 6299		

