

WMT Centrifugal Slurry Pumps

Heavy Duty Horizontal Slurry Pumps HD and MHD ranges

ADVANTAGES AND USES OF WMT HORIZONTAL HEAVY DUTY SLURRY PUMPS

WMT heavy duty slurry pumps are designed to reliably pump highly abrasive and corrosive slurries. The major wear and corrosion resisting parts are easily replaceable. These parts are selected from our wide range of durable metal and elastomer material options that all fit within a common outer casing.

Any one of three shaft seal types, such as GLAND, CENTRIFUGAL (or Expeller) or MECHANICAL in a variety of materials and configurations can be fitted to the pumps to provide maximum reliability.

FEATURES OF WMT HORIZONTAL SLURRY PUMPS

- Cartridge type Bearing Assembly
- Choice of pump frames with VARIOUS kW rating for optimal drive capacity
- Through-bolt design throughout
- Replaceable liners in a large variety of materials
- Screw on Impeller with cast-in thread
- Impeller Release Collar on larger models for ease of maintenance
- Shaft Sleeves in a variety of materials
- Minimum number of casing bolts
- Painted to SWB or customer nominated specifications



TYPICAL APPLICATIONS

- Mill Discharge
- Mineral processing
- Tailings disposal
- Coal Washing
- Steel mills / Slag granulation
- Sand quarrying
- Construction, Chemical and General industries

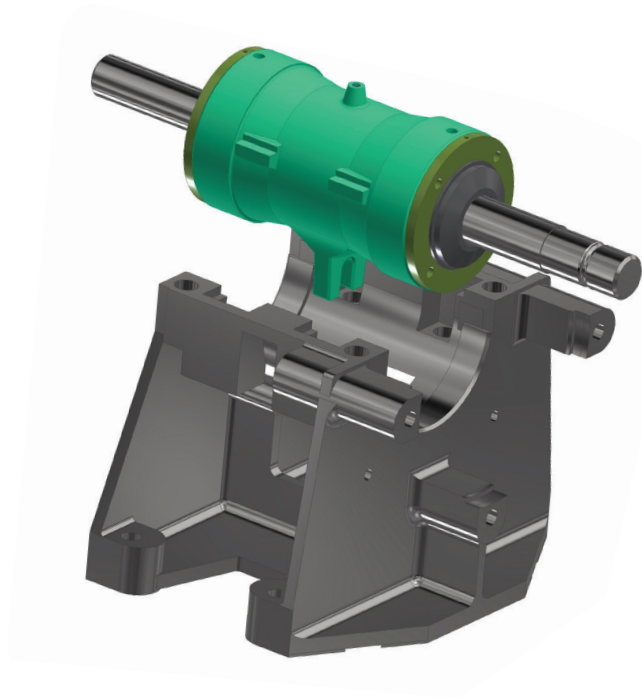
**For all your slurry pumping needs
contact our team of pump experts at:**

WMT / SWB Plus, 1 Mundowi Rd, Mt Kuring-gai NSW 2080
Phone: +61 2 9929 8811 Fax: +61 2 9922 8855
E: pumps@statewidebearings.com.au
or nearest Statewide Bearings branch
www.statewidebearings.com.au



CARTRIDGE TYPE BEARING ASSEMBLY

A strong shaft and high capacity bearings are mounted in a cartridge on a robust cast iron base, allowing simple impeller adjustment to maintain optimum pump efficiency and minimise wear.



The **EXPELLER** seal requires no external flushing water.

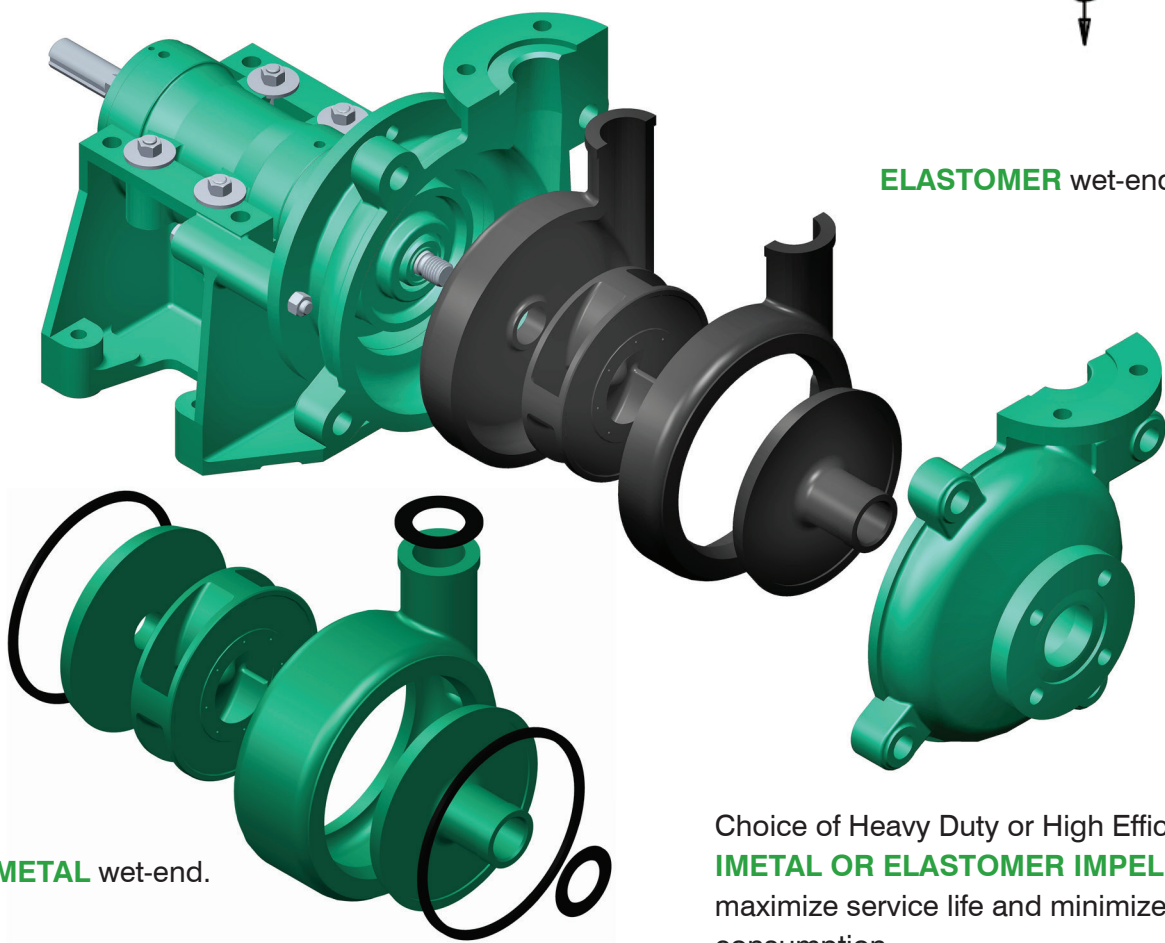
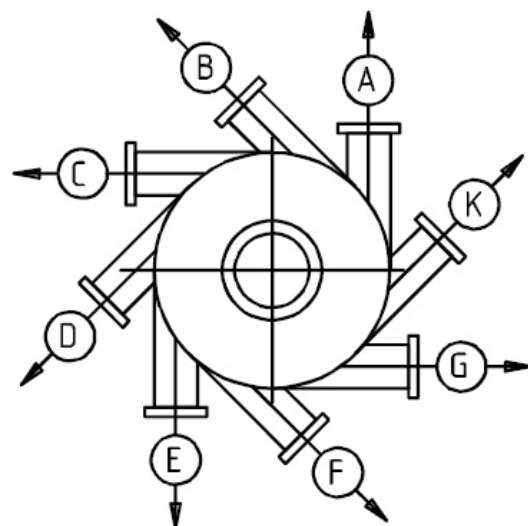
The **PACKED GLAND** seal is used on suction lift and multi-stage applications and needs a water flush.

The **MECHANICAL** seal option is available as required by process.



Selection of abrasion and corrosion resistant **METAL OR ELASTOMER LINERS** which are fully interchangeable and can be mixed and matched within a common casing to provide maximum campaign life.

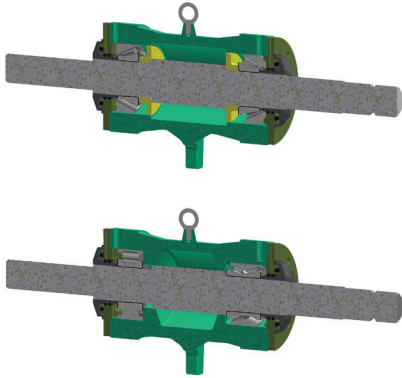
ALTERNATIVE DISCHARGE FLANGE ORIENTATIONS to suit customer installation requirements.



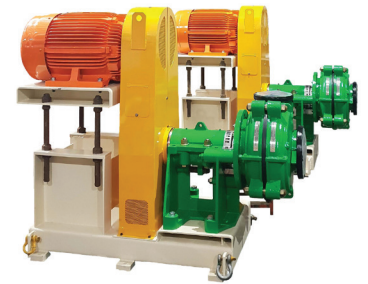
Choice of Heavy Duty or High Efficiency **METAL OR ELASTOMER IMPELLERS** to maximize service life and minimize power consumption.

BEARING ASSEMBLIES

Standard and High Capacity bearing assemblies are available



STANDARD		HI-CAPACITY	
Frame	Power kw	Frame	Power kw
B	15	-	-
C	30	CC	55
D	60	DD	110
E	120	EE	225
F	260	FF	425
G	600	GG	900



DRIVE ARRANGEMENT OPTIONS



Bare shaft pumps and complete units with drives and motors are available

WA	Kewdale WA (National H/Office) 67 Kewdale Road Kewdale WA 6105 Ph: (08) 9352 2200	Bunbury Bearings Ph: (08) 9721 3522	Albany Ph: (08) 9842 2488	Bibra Lake Ph: (08) 9434 9555
	Belmont Ph: (08) 9478 2444	Bunbury Ph: (08) 9724 9100	Collie Ph: (08) 9734 1624	Geraldton Ph: (08) 9964 4655
	Kalgoorlie Ph: (08) 9091 4111	Karratha Ph: (08) 9144 2333	Linear Head Office Ph: (08) 9475 5000	Naval Base Ph: (08) 9410 1800
QLD	Coopers Plains (State H/Office) 902 Beaudesert Road Coopers Plains QLD 4108 Ph: (07) 3717 4444	Coopers Plains Linear dept Ph: (07) 3717 4452	Cairns Ph: (07) 4035 1800	Townsville Ph: (07) 4758 8855
		Mackay Ph: (07) 4952 6660	Rockhampton Ph: (07) 4927 2677	Virginia Ph: (07) 3265 2666
NSW	Smithfield (State H/Office) Unit 2, 324 Woodpark Road Smithfield NSW 2164 Ph: (02) 9616 0000	Beresfield (Newcastle) Ph: (02) 4041 6444	Smithfield Linear dept Ph: (02) 9616 0066	Wollongong Ph: (02) 4272 2377
VIC	Dandenong South (State H/Office) 84 Greens Road Dandenong Sth VIC 3175 Ph: (03) 8710 9777	Dandenong South Linear dept Ph: (03) 9755 6044	Somerton Ph: (03) 9308 0055	Traralgon Ph: (03) 5172 3000
TAS	Hobart 39 Sunderland Street Derwent Park TAS 7009 Ph: (03) 6216 6999	INDONESIA Ph: (62) 542 7031166	NEW ZEALAND Ph: 0274 927 626	
SA	Wingfield 13 Streiff Road Wingfield SA 5013 Ph: (08) 8260 6299	Wingfield Linear dept Ph: (08) 8260 6299		

