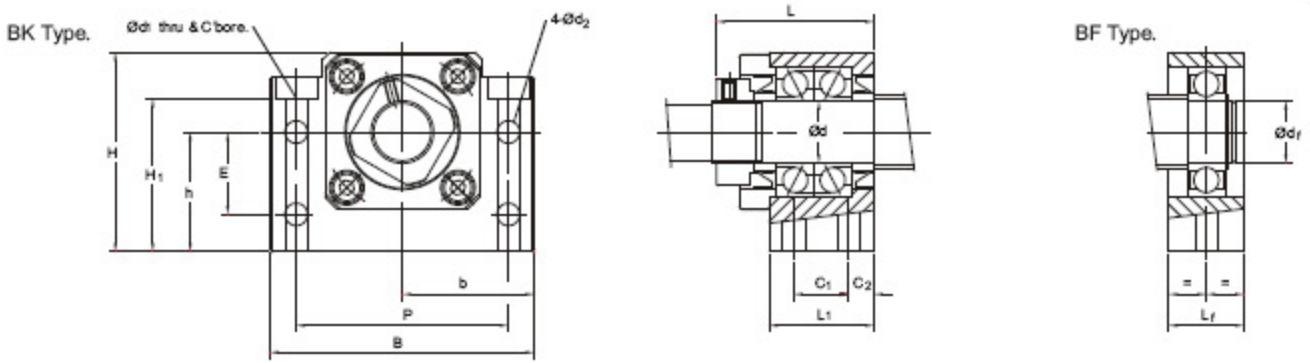


8 BK/BF TYPE BALL SCREW END SUPPORTS

BALL SCREW SUPPORT UNITS - DUAL MOUNTING TYPE

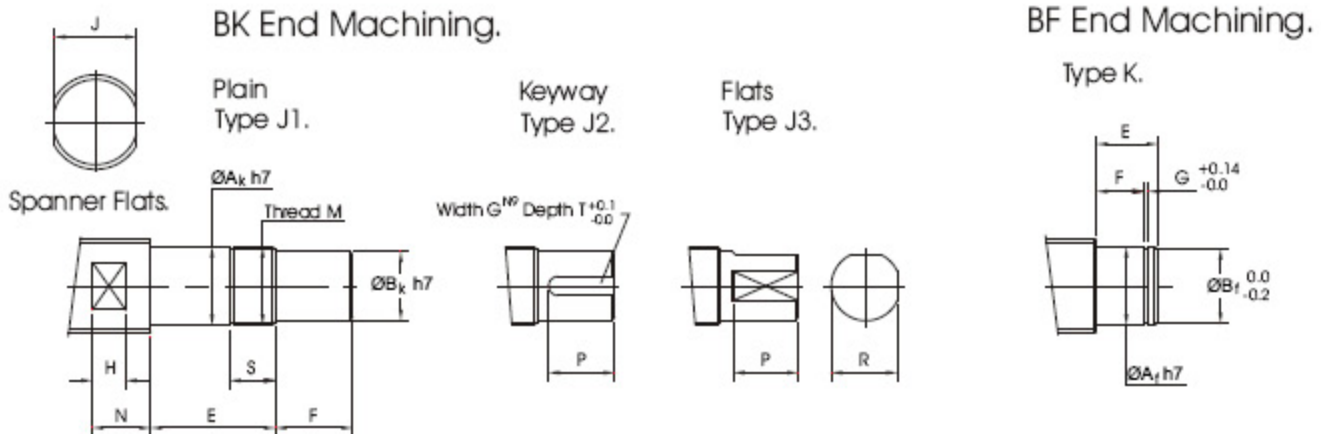


Part No	Body Sizes			Datum		Fixing Holes				Fixed Bearing Unit (BK)						Floating Bearing Unit (BF)				
	B	H	H ₁	$+0.02$ b	$+0.02$ h	E	P	d ₁	d ₂	Part No	L	L ₁	d	Bearing	C ₁	C ₂	Part No	dr	Bearing	L _r
BK/BF10	60	39	28	30	22	15	46	6.6	5.5	BK10	34	25	10	7000DFGMP5	13	6	BF10	8	608ZZ	20
BK/BF12	60	43	31	30	25	18	46	6.6	5.5	BK12	34	25	12	7001DFGMP5	13	6	BF12	10	600ZZ	20
BK/BF15	70	48	32	35	28	18	54	6.6	5.5	BK15	38	27	15	7002DFGMP5	15	6	BF15	15	6002ZZ	20
BK/BF17	86	64	47	43	39	28	68	9.0	6.6	BK17	51	35	17	7203DFGMP5	19	8	BF17	17	6203ZZ	23
BK/BF20	88	60	42	44	34	22	70	9.0	6.6	BK20	51	35	20	7004DFGMP5	19	8	BF20	20	6004ZZ	26
BK/BF25	106	80	59	53	48	33	85	11.0	9.0	BK25	63	42	25	7205DFGMP5	22	10	BF25	25	6205ZZ	30
BK/BF30	128	89	65	64	51	33	102	14.0	11.0	BK30	70	45	30	7206DFGMP5	23	11	BF30	30	6206ZZ	32
BK/BF35	140	96	66	70	52	35	114	14.0	11.0	BK35	79	50	35	7207DFGMP5	26	12	BF35	35	6207ZZ	32
BK/BF40	160	110	73	80	60	37	130	18.0	14.0	BK40	91	61	40	7208DFGMP5	33	14	BF40	40	6208ZZ	37

Note: For more information see THK General Catalogue No. 401E/04-'05

Unit: mm

END MACHINING FOR BK/BF



Screw Outer Dia	Fixed	Dimensions J1										Keyway Type J2			Flats Type J3		Floating	K Dimensions				
		BK	Ak	Bk	E	F*	M	S	J	N	H	G	T	P	R	P		BF	Af	E	Bf	F
14	BK10	10	8	39	15	M10x1	16	10	12	7	2	1.2	11	7.5	11	BF10	8	10	7.6	7	0.9	
15	BK10	10	8	39	15	M10x1	16	10	12	7	2	1.2	11	7.5	11	BF10	8	10	7.6	7	0.9	
16	BK12	12	10	39	15	M12x1	14	13	14	8	3	1.8	12	9.5	12	BF12	10	11	9.6	8	1.15	
18	BK12	12	10	39	15	M12x1	14	13	14	8	3	1.8	12	9.5	12	BF12	10	11	9.6	8	1.15	
20	BK15	15	12	40	20	M15x1	12	16	15	9	4	2.5	16	11.3	16	BF15	15	13	14.3	9	1.15	
25	BK17	17	15	53	23	M17x1	17	18	17	10	5	3.0	21	14.3	21	BF17	17	16	16.2	12	1.15	
28	BK20	20	17	53	25	M20x1	15	21	19	11	5	3.0	21	16.0	21	BF20	20	16	19.0	12	1.35	
30	BK20	20	17	53	25	M20x1	15	24	20	12	5	3.0	21	16.0	21	BF20	20	16	19.0	12	1.35	
32	BK20	20	17	53	25	M20x1	15	27	22	13	5	3.0	21	16.0	21	BF20	20	16	19.0	12	1.35	
36	BK25	25	20	65	30	M25x1.5	18	27	23	13	6	3.5	25	19.0	25	BF25	25	20	23.9	15	1.35	
40	BK30	30	25	72	38	M30x1.5	25	32	25	15	8	4.0	32	23.5	32	BF30	30	21	28.6	16	1.75	
45	BK35	35	30	83	45	M35x1.5	28	36	27	15	8	4.0	40	28.5	40	BF35	35	22	33.0	17	1.75	
50	BK40	40	35	98	50	M40x1.5	35	41	33	19	10	5.0	45	33.0	45	BF40	40	23	38.0	18	1.95	
55	BK40	40	35	98	50	M40x1.5	35	46	34	20	10	5.0	45	33.0	45	BF40	40	23	38.0	18	1.95	

For BK units specify J1, J2 or J3 machining.

* Drive end length F may be customer specified to suit drive coupling. If not specified the length in the table will be used.



STATEWIDE
LINEAR BEARINGS