

For when it really matters

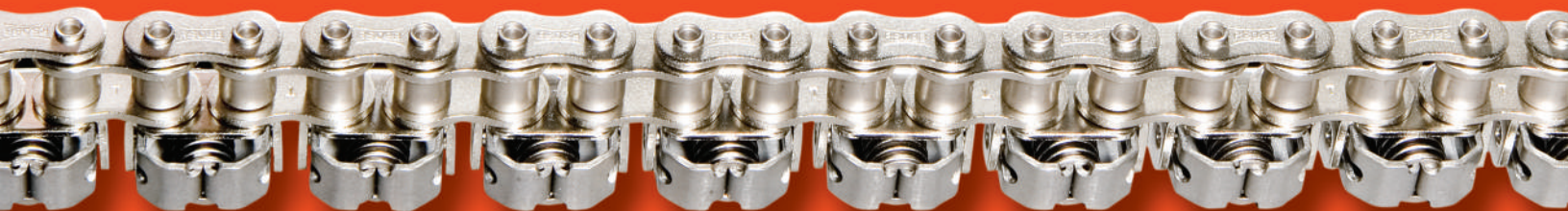


We're number one in helping the
food industry put food on your table.



How you eat is up to you.

 Innovation in Motion
TSUBAKI



For When it Really Matters



The food-processing industry keeps our world fed. No small feat. Tsubaki understands this tough job. It involves a multitude of processes, orchestrated in extreme environments, under highly time-sensitive deadlines. Obstacles like these don't make it easy to succeed. But choosing the right tools can give you the edge.

When you demand Tsubaki conveyor and drive components, you command superior instruments that deliver premium performance. Durable. Reliable. Long-lasting. Tsubaki products are always your best value. Without fail.

Tsubaki chains, sprockets and other power transmission products embrace every aspect of food processing. Whatever the application, whatever the scope: we promise 100 percent compatibility.

Tsubaki is the overall market leader in chain across all industries. But we think you should consider us for more than our stellar reputation. Choose commitment to better manufacturing processes. Choose dedication to improved engineering.

As of this catalog's print date, overall, the Tsubaki Advantage has saved these customers a total of \$2,000,067 (Cdn).



Choose quality worthy of your business!

Table of Contents

Common Chains for the Food Industry

ANSI G7 Roller Chain	3
British Standard Drive Chain	3
Corrosion Resistant Chain	4
Lambda & Lambda Corrosion Resistant (Lube Free) Chain	5
Single Pitch Standard Attachment Chain	6-7
Double Pitch Standard Attachment Chain	8-9
British Standard Attachment Chain	10
Hollow Pin Chain	11
Hollow Pin Attachment Chain	12
Curved Attachment Chain	13
Ordering Attachment Chain	14
Special Attachment Guidelines	15
Engineering Class Roller Conveyor Chain	16-17

Food Industry Specific Special Chains

Bakery

Proofer Chains	19
--------------------------	----

Meat

Gripper Chains™	20
Vacuum Wrapper Chain	20
Red Meat Processing Chains	21

Dairy / Ice Cream

Dairy Case Conveyor Chain	22
Hardener Chain	22
Tunnel Freezer Chain	23

Food Processing

Can Feeder Chain	24
Can Closer Chain	25

Chocolate & Confectionary

Chocolate Forming Chain	26
Cornstarch Line Chain	27

More Than Just Chain...	28
---------------------------------	----

Technical Services	29
------------------------------	----



Introduction to Tsubaki Roller Chain

After almost a century of chain design, engineering and manufacturing experience, you can count on Tsubaki standard roller chain to deliver consistent superior performance and longer life. All minimizing your downtime and maximizing your output. And all for a price a lot less than you might think. From the best heat-treated steel for the job to groundbreaking patents, you can trust Tsubaki to deliver the quality difference you can see.

Tsubaki's Patented Lube Grooves Extend Wear Life and Performance by up to 30%

Long Lasting Solid Rollers Provide Greater Fatigue Life and Durability at High Speeds

Precision Riveting Process Helps to Withstand Side Load Impact

Wide Waist Link Plates Provide Tensile Strength and Maximum Allowable Load that Exceeds ANSI Standards

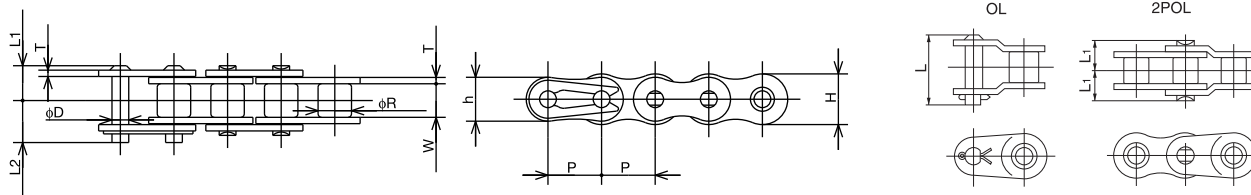
Tsubaki's Patented Ring Coining Generates Unsurpassed Connecting Link Strength

ANSI G7 Roller Chain

Tsubaki brings almost a century of chain design, engineering and manufacturing experience to every job. You can count on our experience and our standard roller chain to deliver consistent, superior performance and longer life.

When innovation really matters

RS Single Pitch



All dimensions in inches unless otherwise stated.

Chain Number	Pitch P	Roller Dia. R	Width Between Inner Link Plates W	Link Plate			Pin				Average Tensile Strength (lbs.)	Maximum Allowable Load (lbs.)	Approximate Weight (lbs./ft.)
				Thickness T	Height H	Height h	Dia. D	Length L ₁ + L ₂	Length L ₁	Length L ₂			
RS25	0.250	* 0.130	0.125	0.030	0.230	0.199	0.090	0.327	0.150	0.177	1,050	140	0.09
RS35	0.375	* 0.200	0.188	0.050	0.354	0.307	0.141	0.500	0.230	0.270	2,530	480	0.22
RS40	0.500	0.312	0.313	0.060	0.472	0.409	0.156	0.717	0.325	0.392	4,290	810	0.43
RS50	0.625	0.400	0.375	0.080	0.591	0.512	0.200	0.878	0.406	0.472	7,040	1,430	0.70
RS60	0.750	0.469	0.500	0.094	0.713	0.614	0.235	1.087	0.506	0.581	9,900	1,980	1.03
RS80	1.000	0.625	0.625	0.126	0.949	0.819	0.313	1.398	0.640	0.758	17,600	3,300	1.78
RS100	1.250	0.750	0.750	0.157	1.185	1.024	0.376	1.677	0.778	0.900	26,400	5,060	2.67
RS120	1.500	0.875	1.000	0.187	1.425	1.228	0.437	2.118	0.980	1.138	37,400	6,820	3.97
RS140	1.750	1.000	1.000	0.221	1.661	1.433	0.500	2.307	1.059	1.248	48,400	9,020	5.02
RS160	2.000	1.125	1.250	0.250	1.898	1.638	0.562	2.705	1.254	1.451	62,700	11,880	6.77

* Denotes that sizes RS25 and RS35 are rollerless. The value shown is for the bushing diameter.

Note: Spring clip type connecting links will be provided for RS25 to RS60 unless otherwise specified.

British Standard Drive Chain

Machines originating from Europe, typically call for British-standard drive chain. Tsubaki manufactures the most complete line of this chain — from sizes RS05B to RS48B — in materials including carbon steel, lube-free Lambda, corrosion-resistant nickel-plated, Neptune and stainless steel.

When compatibility really matters

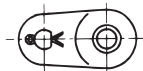
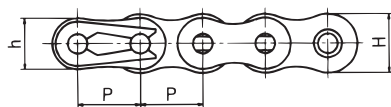
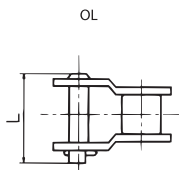
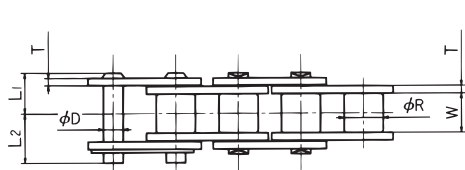
All dimensions in inches unless otherwise stated.

Chain Number	Pitch P	Roller Dia. R	Width Between Inner Link Plates W	Link Plate				Pin					Nominal Bearing Area (in ²)	Average Tensile Strength (lbs.)	Approx. Weight (lbs./ft.)
				Roller Link Thickness T ₁	Pin Link Thickness T ₂	Roller Link Height H	Pin Link Height h	Dia. D	Length L ₁ + L ₂	Length L ₁	Length L ₂	Offset Pin Length L			
RS08B	0.500	0.335	0.305	0.063	0.063	0.465	0.409	0.175	0.724	0.331	0.394	0.7244	0.078	4,400	0.47
RS10B	0.625	0.400	0.380	0.059	0.059	0.579	0.539	0.200	0.819	0.376	0.443	0.8307	0.104	5,830	0.64
RS12B	0.750	0.475	0.460	0.071	0.071	0.634	0.634	0.225	0.957	0.441	0.516	0.5157	0.138	7,480	0.84
RS16B	1.000	0.625	0.670	0.157	0.126	0.827	0.827	0.326	1.484	0.699	0.785	0.7854	0.326	16,500	1.81

Corrosion Resistant Chain

No matter how complex your corrosion problems, Tsubaki has solutions. We can recommend the best options to address your conditions — from nickel-plated chains to the more robust Neptune to different types of stainless and poly steel. With Tsubaki, you always make the right choice.

When durability really matters



All dimensions are in inches unless otherwise indicated.

Chain Numbers				Pitch	Roller Dia.	Inner Width	Link Plate			Pin			
304 SS Stainless Steel	600 AS Stainless Steel	NEP Coated	Nickel Plated NP				Link Plate Thickness	Roller Link Plate Height	Pin Link Plate Height	Pin Diameter	Length	Length	Length
				P	R	W	T	H	h	D	L ₁ +L ₂	L ₁	L ₂
40SS	40AS	40NEP	40NP	0.500	0.312	0.313	0.059	0.472	0.409	0.156	0.717	0.325	0.392
50SS	50AS	50NEP	50NP	0.625	0.400	0.375	0.079	0.591	0.512	0.200	0.878	0.406	0.472
60SS	60AS	60NEP	60NP	0.750	0.469	0.500	0.094	0.713	0.614	0.235	1.087	0.506	0.581
80SS	80AS	80NEP	80NP	1.000	0.625	0.625	0.126	0.949	0.819	0.313	1.398	0.640	0.758
100SS		100NEP	100NP	1.250	0.750	0.750	0.157	1.185	1.024	0.376	1.677	0.778	0.900
120SS		120NEP	120NP	1.500	0.875	1.000	0.187 (0.197)	1.425	1.228	0.437	2.118 (2.187)	0.980 (1.014)	1.138 (1.173)
140SS		140NEP	140NP	1.750	1.000	1.000	0.221 (0.236)	1.661	1.433	0.500	2.307 (2.406)	1.059 (1.108)	1.248 (1.297)

Dimensions in () denotes SS or AS Stainless Steel Chain.

All dimensions are in inches unless otherwise indicated.

Chain No.	Average Tensile Strength* lbs		Maximum Allowable Load Lbs				Chain Weight lbs/Ft	Links per 10 Feet	Temperature Range °C*			
	NEP	NP	SS	AS	NEP	NP			SS	AS	NEP	NP
40	4,293	4,293	98	155	816	683	0.43	240	-20 to 400	-20 to 400	-10 to 150	-10 to 60
50	7,058	7,058	155	231	1,431	1,211	0.70	192				
60	9,913	9,913	231	352	1,984	1,632	1.03	160				
80	17,646	17,646	397	595	3,304	2,854	1.79	120				
100	26,526	26,526	573	-	5,080	4,293	2.68	96				
120	37,541	37,541	858	-	6,833	5,732	3.98 (4.11)	80				
140	48,556	48,556	1,036	-	9,036	-	5.02 (5.30)	68				

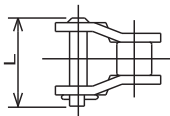
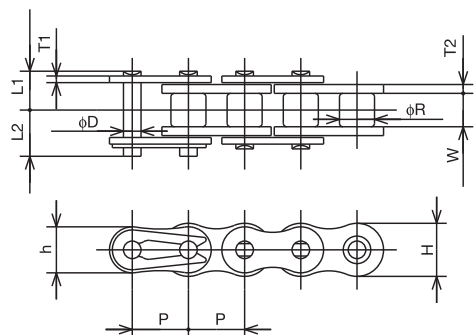
* SS and AS Stainless Steel Chain are not rated using a traditional tensile strength test. Please refer to their maximum allowable loads.
Dimensions in () denotes SS or AS Stainless Steel Chain.

Lambda

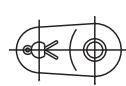
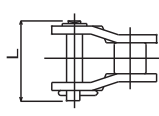
& Lambda Corrosion Resistant (Lube Free) Chain

Lambda chain is your alternative to costly lubrication maintenance. The self-lubricating feature of Lambda can directly replace existing standard chain with practically no loss of strength. As an added bonus, eliminating lubrication in your system means no product contamination.

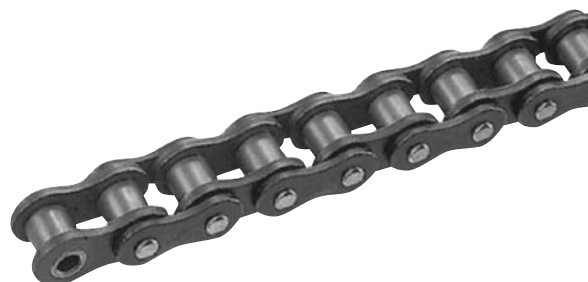
When endurance really matters



#40 to #80



#100 to #140



All dimensions are in inches unless otherwise indicated.

Lambda Chain No.	Lambda Nickel Plated Chain No.	Lambda NEP Chain No.	Pitch	Roller Dia.	Inner Width	Link Plate				Pin				
						Roller Link Plate Thickness	Pin Link Plate Thickness	Roller Link Plate Height	Pin Link Plate Height	Pin Diameter	Length	Length	Length	Offset Pin Length
			P	R	W	T	t	H	h	D	L ₁ +L ₂	L ₁	L ₂	L
40LAM	40LAMNP	40LAMNEP	0.500	0.312	0.297	0.079	0.059	0.472	0.409	0.156	0.757	0.346	0.411	0.787
50LAM	50LAMNP	50LAMNEP	0.625	0.400	0.365	0.094	0.079	0.591	0.512	0.200	0.913	0.423	0.490	0.945
60LAM	60LAMNP	60LAMNEP	0.750	0.469	0.483	0.126	0.094	0.713	0.614	0.235	1.157	0.541	0.616	1.260
80LAM	80LAMNP	80LAMNEP	1.000	0.625	0.609	0.157	0.126	0.949	0.819	0.313	1.472	0.675	0.797	1.571
100LAM	100LAMNP	100LAMNEP	1.250	0.750	0.736	0.189	0.157	1.185	1.024	0.376	1.752	0.813	0.939	1.870
120LAM	120LAMNP	120LAMNEP	1.500	0.875	0.974	0.220	0.189	1.425	1.228	0.437	2.193	1.014	1.179	2.323
140LAM	140LAMNP	140LAMNEP	1.750	1.000	0.974	0.252	0.220	1.661	1.433	0.500	2.358	1.091	1.268	2.508

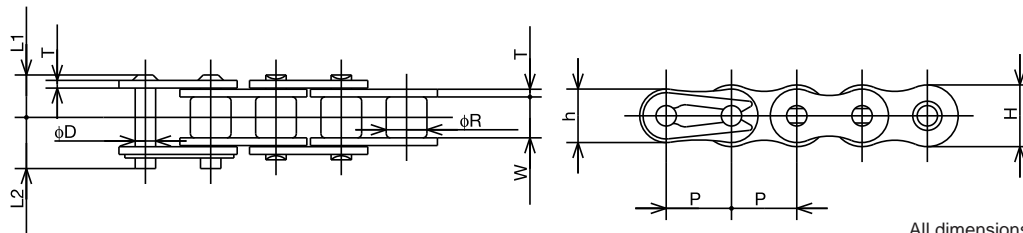
All dimensions are in inches unless otherwise indicated.

Chain No.	Average Tensile Strength		Maximum Allowable Load		Chain Weight	Links per 10 Feet	Max. Allowable Speed
	Standard & NEP	Nickel Plated	Standard & NEP	Nickel Plated			
	lbs	lbs	lbs	lbs	lbs/Ft		Ft/Min
40LAM	4,293	4,293	816	683	0.47	240	492
50LAM	7,058	7,058	1,431	1,211	0.74	192	443
60LAM	9,913	9,913	1,984	1,632	1.15	160	394
80LAM	17,646	17,646	3,304	2,854	1.86	120	295
100LAM	26,526	26,526	5,080	4,293	2.88	96	262
120LAM	37,512	37,512	6,833	5,732	4.29	80	164
140LAM	48,556	48,556	9,036	7,710	5.43	68	164

Single Pitch Standard Attachment Chain

Tsubaki stocks many styles of standard attachments locally for quick assembly as dictated by your spacing needs. These are also available in self-lubricating Lambda and corrosion-resistant options.

When expedience really matters



All dimensions in inches unless otherwise stated.

Chain Size	Pitch	Roller Diameter	Inner Width	Link Plate			Pin				Chain Weight (lbs./ft.)
				Plate Thickness	Roller Link Plate Height	Pin Link Plate Height	Diameter	Overall Length	Length	Length	
				T	H	h	D	L ₁ +L ₂	L ₁	L ₂	
40	0.500	0.312	0.313	0.060	0.472	0.409	0.156	0.717	0.325	0.392	0.430
50	0.625	0.400	0.375	0.080	0.591	0.512	0.200	0.878	0.406	0.472	0.700
60	0.750	0.469	0.500	0.094	0.713	0.614	0.235	1.087	0.506	0.581	1.030
80	1.000	0.625	0.625	0.126	0.949	0.819	0.313	1.398	0.640	0.758	1.780
100	1.250	0.750	0.750	0.157	1.185	1.024	0.376	1.677	0.778	0.900	2.670
120	1.500	0.875	1.000	0.187 (0.196)	1.425	1.228	0.437	2.118 (2.187)	0.980 (1.014)	1.138 (1.173)	3.970
140	1.750	1.000	1.000	0.221 (0.236)	1.661	1.433	0.500	2.307 (2.405)	1.059 (1.108)	1.248 (1.297)	5.020
160	2.000	1.125	1.250	0.250 (0.276)	1.898	1.638	0.562	2.705 (2.772)	1.254 (1.254)	1.451 (1.518)	6.770

Dimensions in () denotes SS or AS Stainless Steel Chain.

All dimensions in inches unless otherwise stated.

Chain Size	Average Tensile Strength*						Maximum Allowable Load							
	Std	NP Nickel Plated	NEP	L Lambda	LNP Lambda Nickel Plated	LNEP Lambda NEP	Std	SS 304 Stainless Steel	AS 600 Stainless Steel	NP Nickel Plated	NEP	L Lambda	LNP Lambda Nickel Plated	LNEP Lambda NEP
40	3,754	3,754	3,754	3,529	3,529	3,529	595	98	155	595	595	595	595	595
50	6,182	6,182	6,182	5,732	5,732	5,732	968	155	231	968	968	968	968	968
60	9,036	9,036	9,036	8,385	8,385	8,385	1,411	231	352	1,411	1,411	1,411	1,411	1,411
80	15,421	15,421	15,421	14,319	14,319	14,319	2,405	398	595	2,405	2,405	2,405	2,405	2,405
100	24,278	24,278	24,278	22,480	22,480	22,480	3,844	573	-	3,844	3,844	3,844	3,844	3,844
120	33,944	33,944	-	-	-	-	5,372	858	-	5,372	-	-	-	-
140	45,859	45,859	-	-	-	-	7,283	1,036	-	7,283	-	-	-	-
160	57,998	57,998	-	-	-	-	9,194	1,431	-	9,194	-	-	-	-

* SS and AS Stainless Steel Chain are not rated using a traditional tensile strength test. Please refer to their maximum allowable loads.

All dimensions in inches unless otherwise stated.

Chain Size	Attachment Dimensions											Additional Weight Per Attachment (lbs/pc)		
	C	C ₁	N	O	S	X	X ₂	X _s	L ₃	L ₄	T	A, SA	K, SK	D
40	0.500	0.500	0.375	0.141	0.315	0.701	0.701	0.685	0.375	0.659	0.060	0.004	0.009	0.002
50	0.625	0.625	0.500	0.205	0.406	0.921	0.921	0.907	0.469	0.827	0.080	0.007	0.013	0.004
60	0.750	0.720	0.625	0.205	0.469	1.110	1.110	1.057	0.563	1.014	0.094	0.015	0.031	0.007
80	1.000	0.970	0.752	0.268	0.626	1.441	1.441	1.396	0.752	1.333	0.126	0.029	0.057	0.015
100	1.250	1.252	1.000	0.343	0.780	1.768	1.768	1.732	0.937	1.644	0.157	0.057	0.115	0.026
120	1.500	1.437	1.126	0.386	0.906	2.197 (2.232)	2.000 (2.027)	2.081	1.126	2.024	0.187 (0.196)	0.097 (0.102)	0.194 (0.202)	0.044
140	1.750	1.750	1.375	0.448	1.125	2.42 (2.543)	2.251 (2.283)	2.437	1.311	2.264	0.221 (0.236)	0.157 (0.167)	0.313 (0.334)	0.066
160	2.000	2.000	1.500	0.516	1.250	2.84 (2.902)	2.563 (2.598)	2.750	1.500	2.654	0.25 (0.276)	0.214 (0.233)	0.428 (0.466)	0.099

Dimensions in () denotes SS or AS Stainless Steel Chain.

Application:

Wash-down conveyor (See page 4)

Savings:

\$1,457.45 in 6.4 months

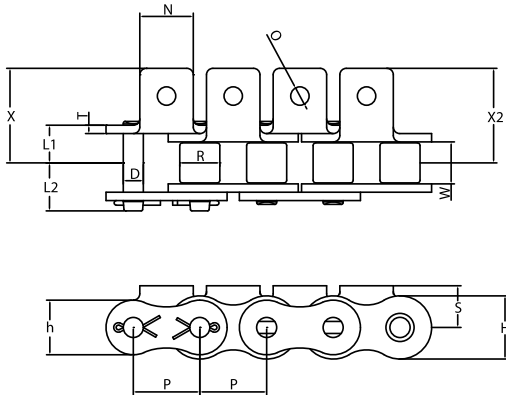
Tsubaki solution:

Customer saved by using high-strength, corrosion-resistant Tsubaki Neptune drive chain rather than non-coated, carbon-steel chain.

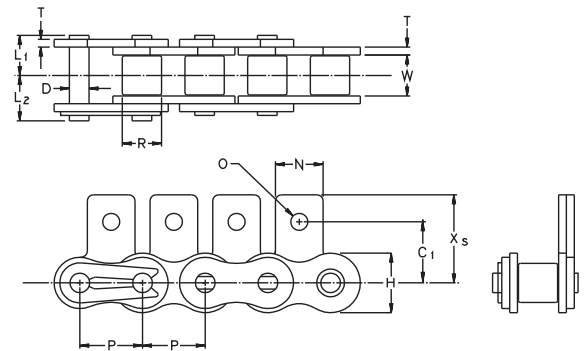
It really mattered to this Tsubaki customer

RS Single Pitch

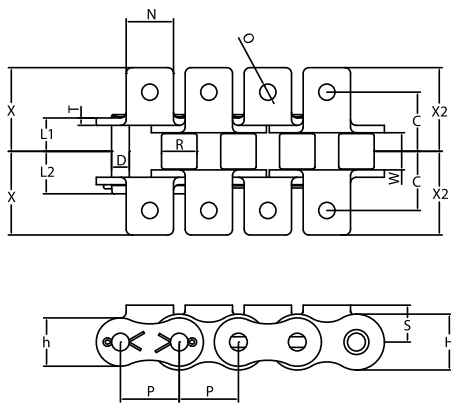
A-1 Attachment



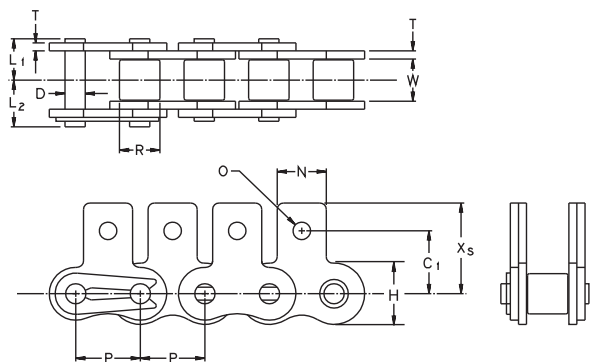
SA-1 Attachment



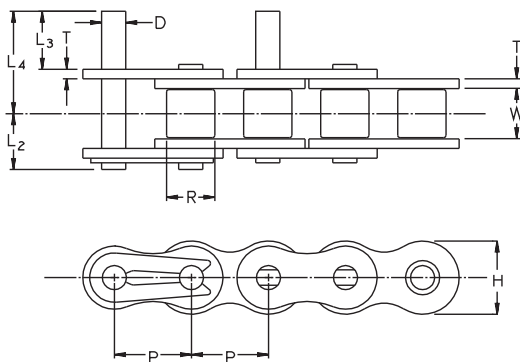
K-1 Attachment



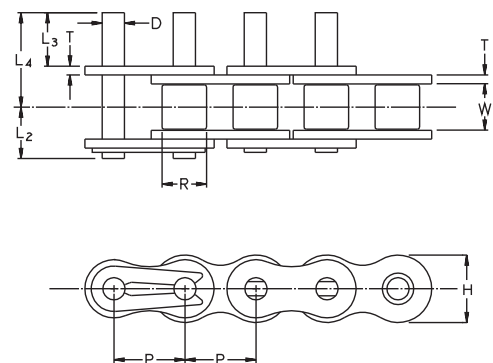
SK-1 Attachment



D-1 Attachment



D-3 Attachment

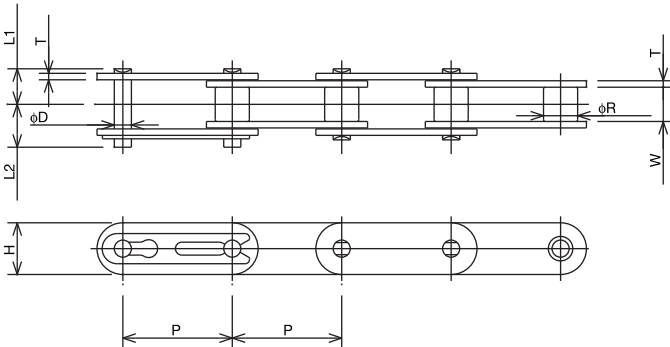


Double Pitch Standard Attachment Chain

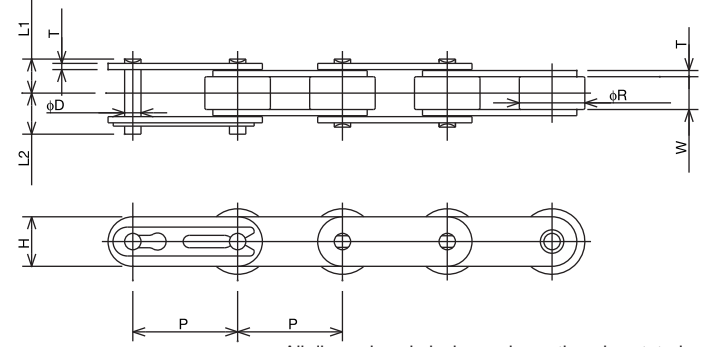
Double-pitch chain is an economical choice for your conveyance needs. Standard attachments are always stocked for quick delivery.

When convenience really matters

Standard Roller Type (Type S)



Oversize Roller Type (Type R)



All dimensions in inches unless otherwise stated.

S Type Chain No.	R Type Chain No.	Pitch	S Type Roller Diameter	R Type Roller Diameter	Inner Width	Link Plate		Pin				S Type Chain Weight	R Type Chain Weight
						Thickness	Height	Dia.	Overall Length	Length	Length		
		P	R	R	W	T	H	D	L ₁ + L ₂	L ₁	L ₂	lbs/Ft	lbs/Ft
C2040	C2042	1.000	0.312	0.625	0.313	0.059	0.472	0.156	0.717	0.325	0.392	0.34	0.58
C2050	C2052	1.250	0.400	0.750	0.375	0.079	0.591	0.200	0.878	0.406	0.472	0.56	0.87
C2060H	C2062H	1.500	0.469	0.875	0.500	0.126	0.677	0.235	1.224	0.573	0.652	1.01	1.47
C2080H	C2082H	2.000	0.625	1.125	0.625	0.157	0.906	0.313	1.543	0.720	0.823	1.61	2.36
C2100H	C2102H	2.500	0.750	1.563	0.750	0.189 (0.197)	1.125	0.376	1.823 (1.858)	0.858 (0.878)	0.965 (0.980)	2.37	3.89
C2120H	C2122H	3.000	0.875	1.750	1.000	0.219 (0.236)	1.370	0.427	2.240 (2.354)	1.030 (1.109)	1.210 (1.250)	3.41	5.46
C2160H	C2162H	4.000	1.125	2.250	1.250	0.281 (0.315)	1.897	0.563	2.851 (3.024)	1.337 (1.406)	1.514 (1.514)	6.02	9.21

Dimensions in () denotes SS or AS Stainless Steel Chain.

All dimensions in inches unless otherwise stated.

S Type Chain No.	R Type Chain No.	Average Tensile Strength*						Maximum Allowable Load							
		Std	NP Nickel Plated	NEP	L Lambda	LNP Lambda Nickel Plated	LNEP Lambda NEP	Std	SS 304 Stainless Steel	AS 600 Stainless Steel	NP Nickel Plated	NEP	L Lambda	LNP Lambda Nickel Plated	LNEP Lambda NEP
C2040	C2042	3,754	3,754	3,754	3,529	3,529	3,529	595	98	155	595	595	595	595	595
C2050	C2052	6,182	6,182	6,182	5,732	5,732	5,732	968	155	231	968	968	968	968	968
C2060H	C2062H	9,036	9,036	9,036	8,385	8,385	8,385	1,411	231	352	1,411	1,411	1,411	1,411	1,411
C2080H	C2082H	15,421	15,421	15,421	14,319	14,319	14,319	2,405	397	595	2,405	2,405	2,405	2,405	2,405
C2100H	C2102H	24,278	24,278	24,278	22,480	22,480	22,480	3,844	573	—	3,844	3,844	3,844	3,844	3,844
C2120H	C2122H	33,944	33,944	—	—	—	—	5,372	858	—	5,372	—	—	—	—
C2160H	C2162H	57,998	57,998	—	—	—	—	9,194	1,431	—	9,194	—	—	—	—

* SS and AS Stainless Steel Chain are not rated using a traditional tensile strength test. Please refer to their maximum allowable loads.

All dimensions in inches unless otherwise stated.

Chain Size	Attachment Dimensions													Additional Weight per Attachment		
	X	X ₂	C	S	K	N	O	X _s	C ₁	C ₂	K	O ₁	T	A & SA	K & SK	D ₁
C2040	0.760	0.693	0.500	0.358	0.374	0.752	0.142	0.780	0.437	0.535	0.374	0.205	0.060	0.007	0.013	0.002
C2050	0.953	0.866	0.626	0.437	0.469	0.937	0.205	0.969	0.563	0.626	0.469	0.268	0.080	0.013	0.026	0.004
C2060H	1.240	1.110	0.844	0.579	0.563	1.126	0.205	1.205	0.689	0.752	0.563	0.343	0.125	0.037	0.075	0.007
C2080H	1.602	1.441	1.094	0.752	0.752	1.500	0.268	1.594	0.874	1.000	0.752	0.406	0.156	0.071	0.141	0.015
C2100H	1.950	1.768	1.312	0.922	0.937	1.875	0.323	1.984	1.125	1.250	0.938	0.516	0.189 (0.197)	0.132 (0.139)	0.265 (0.277)	0.026
C2120H	2.390 (2.433)	2.142 (2.173)	1.562	1.093	1.125	2.250	0.386	2.361	1.312	1.468	1.125	0.578	0.219 (0.236)	0.221 (0.235)	0.441 (0.471)	0.044
C2160H	3.060 (3.163)	2.760 (2.821)	2.062	1.437	1.500	3.000	0.516	3.093	1.750	2.000	1.500	0.771	0.281 (0.315)	0.448 (0.499)	0.895 (0.999)	0.099

Dimensions in () denotes SS or AS Stainless Steel Chain.

Application:

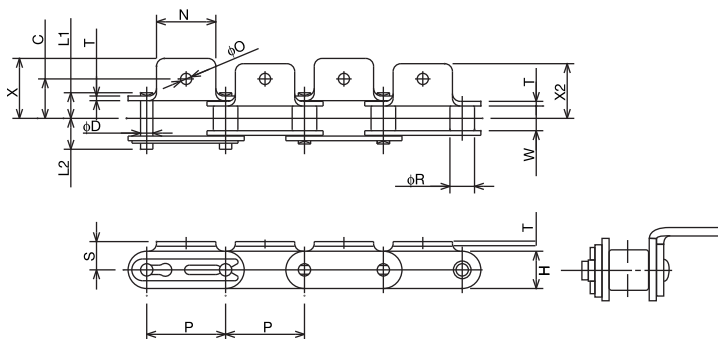
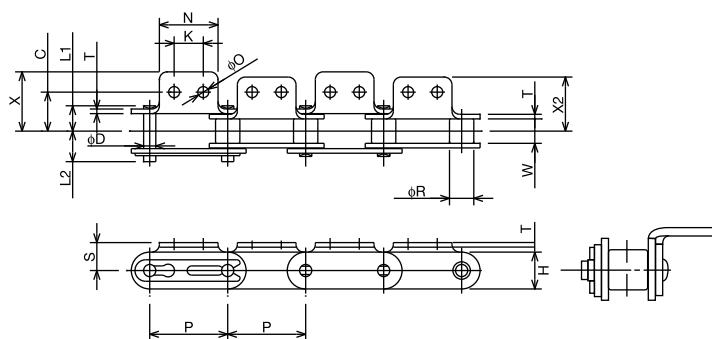
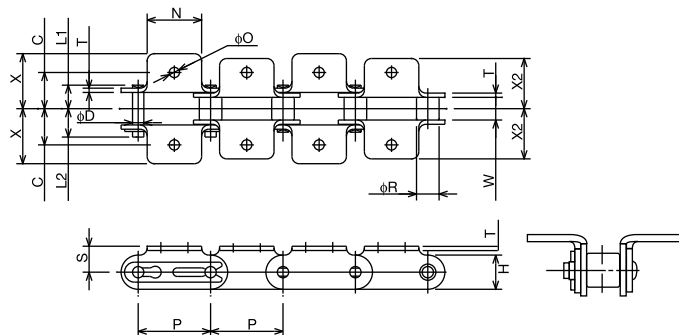
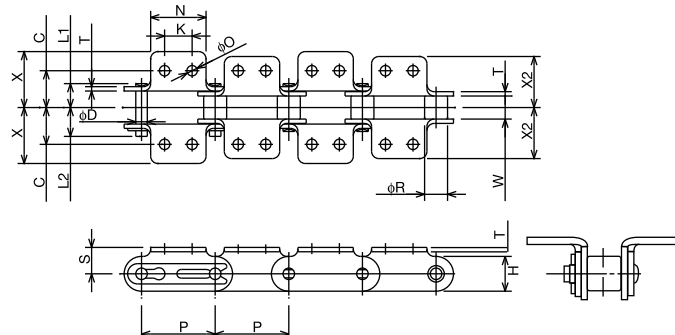
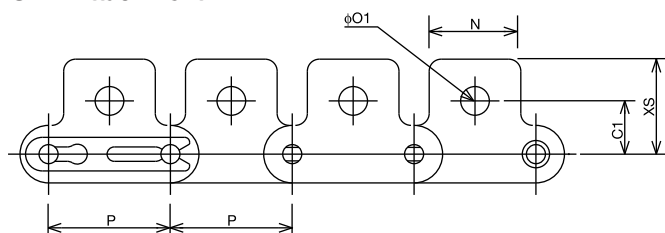
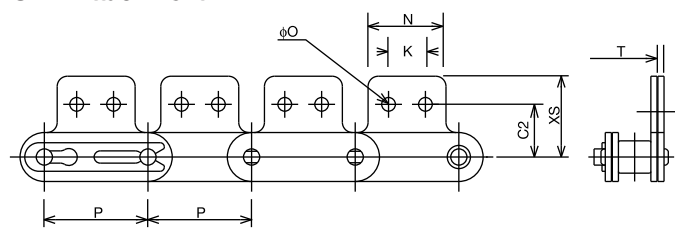
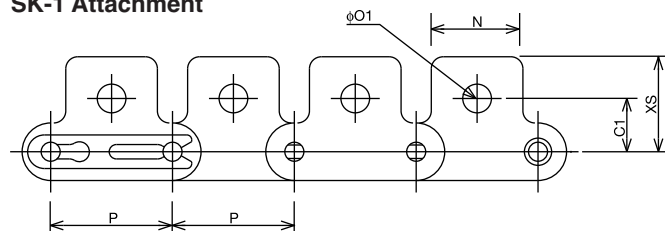
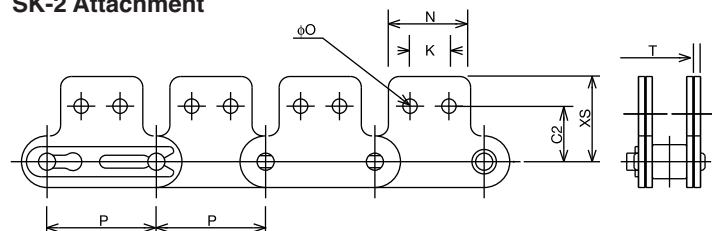
Cooling tower (See page 5)

Savings:

\$8,439.83 in 15.1 months

Tsubaki solution:

Customer chose Tsubaki Lambda self-lubricating chain over a low-cost drive chain.

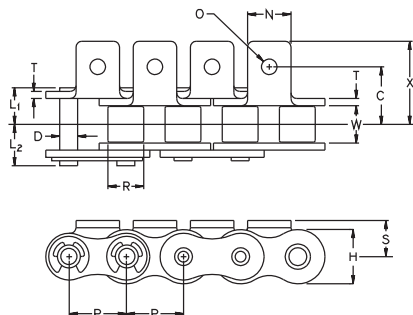
It really mattered to this Tsubaki customer**A-1 Attachment****A-2 Attachment****K-1 Attachment****K-2 Attachment****SA-1 Attachment****SA-2 Attachment****SK-1 Attachment****SK-2 Attachment**

British Standard Attachment Chain

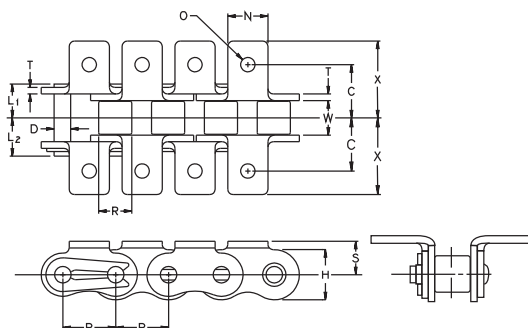
In the food industry, it's common to find British standard attachment chain as many manufacturers originate from Europe. With the industry's most complete range of British-standard chain, Tsubaki has exactly what you need.

When selection really matters

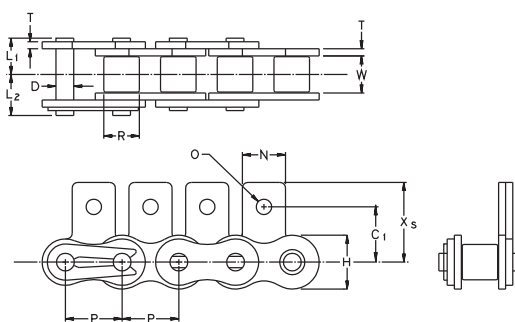
A-1 Attachment



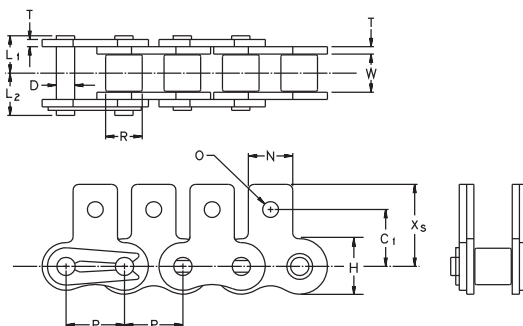
K-1 Attachment



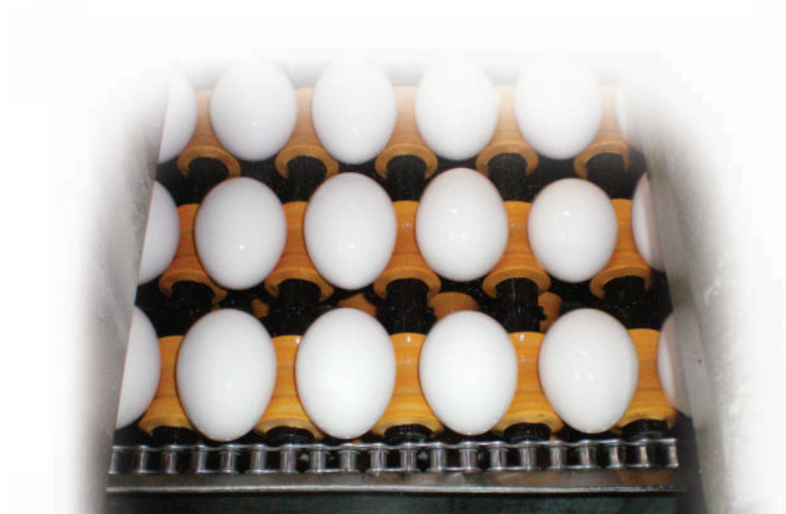
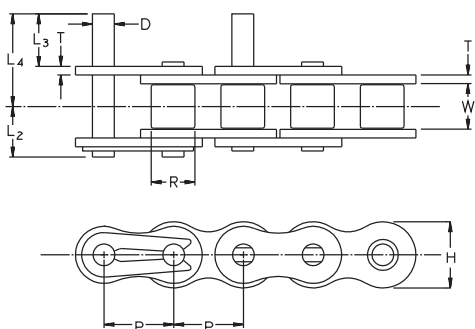
SA-1 Attachment



SK-1 Attachment



D-1 Attachment



All dimensions in inches unless otherwise stated.

Chain Number	A, SA, K, SK, D ₁ Attachment Dimensions									Additional Weight per Attachment (lbs.)		
	C	C ₁	N	O	S	X	X _s	L ₃	L ₄	A, SA Attach.	K, SK Attach.	D ₁ Attach.
RS08B	0.468	0.500	0.448	0.165	0.350	0.750	0.759	0.374	0.667	0.004	0.008	0.002
RS10B	0.625	0.625	0.500	0.196	0.401	0.875	0.901	0.468	0.799	0.007	0.013	0.004
RS12B	0.750	0.874	0.649	0.279	0.531	1.175	1.271	0.562	0.956	0.015	0.030	0.007
RS16B	0.937	0.937	0.948	0.263	0.598	1.470	1.358	0.751	1.389	0.029	0.057	0.015

Hollow Pin Chain

COST SAVINGS!

Application:

Fresh food freezer tunnel (See page 5)

Savings:

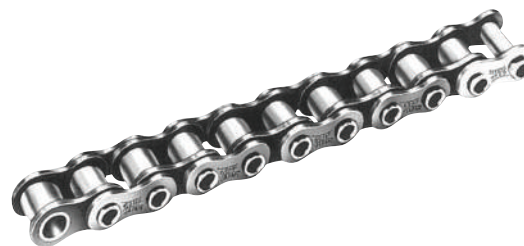
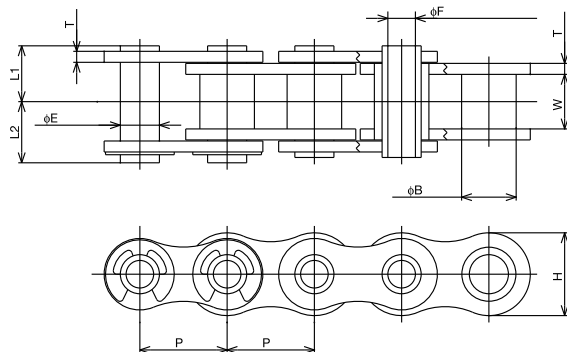
\$1,770.13 in 17.5 months

Tsubaki solution:

Customer chose Tsubaki's corrosion-resistant and self-lubricating Lambda Neptune chain over standard nickel-plated chain.

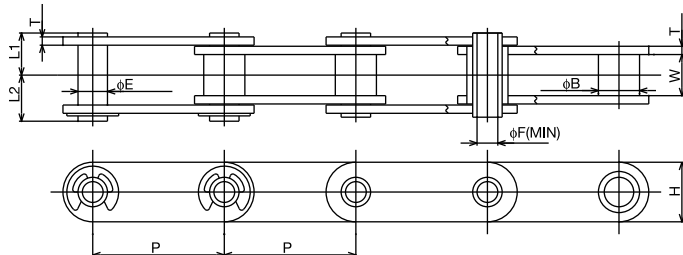
It really mattered to this Tsubaki customer

RS Single Pitch

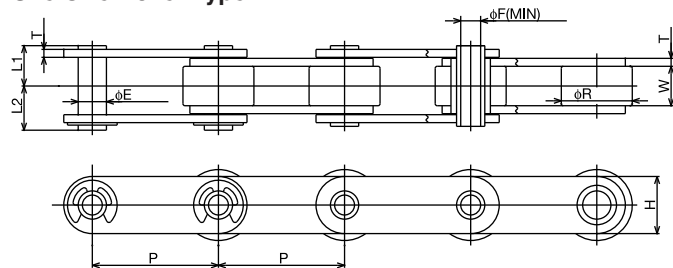


Double Pitch

Standard Bushed Type



Oversize Roller Type



All dimensions in inches unless otherwise stated.

Chain Number	Pitch P	Standard Type Bushing Diameter B	Oversized Type Roller Diameter R	Width Between Inner Link Plates W	Link Plate		Pin					Average Tensile Strength (lbs.)	Maximum Allowable Load (lbs.)	Approx. Weight (lbs./ft.)
					Thickness T	Height H	Outer Dia. E	Inner Dia. F (min.)	Length L ₁ + L ₂	Length L ₁	Length L ₂			
RS40HP	0.500	0.312	-	0.312	0.060	0.472	0.224	0.157	0.689	0.315	0.374	2,400	390	0.38
RS50HP	0.625	0.400	-	0.375	0.080	0.591	0.284	0.202	0.855	0.396	0.459	4,400	700	0.62
RS60HP	0.750	0.469	-	0.500	0.094	0.713	0.330	0.236	1.055	0.494	0.561	5,900	940	0.91
RS80HP	1.000	0.625	-	0.625	0.125	0.949	0.448	0.316	1.341	0.640	0.701	10,000	1,700	1.50
Standard Bushing Type														
C2040HP	1.000	0.312	-	0.312	0.059	0.472	0.224	0.157	0.689	0.315	0.374	2,400	390	.31
C2050HP	1.250	0.400	-	0.400	0.079	0.591	0.284	0.202	0.854	0.396	0.459	4,400	700	.50
C2060HP	1.500	0.469	-	0.469	0.094	0.677	0.330	0.236	1.055	0.494	0.561	5,900	940	.92
C2080HP	2.000	0.625	-	0.625	0.126	0.905	0.448	0.316	1.341	0.640	0.701	10,000	1,700	1.21
Oversize Roller Type														
C2042HP	1.000	-	0.625	0.312	0.059	0.472	0.224	0.157	0.689	0.315	0.374	2,400	390	.55
C2052HP	1.250	-	0.750	0.400	0.079	0.591	0.284	0.202	0.854	0.396	0.459	4,400	700	.81
C2062HP	1.500	-	0.875	0.469	0.094	0.677	0.330	0.236	1.055	0.494	0.561	5,900	940	1.38
C2082HP	2.000	-	1.125	0.625	0.126	0.905	0.448	0.316	1.341	0.640	0.701	10,000	1,700	1.88

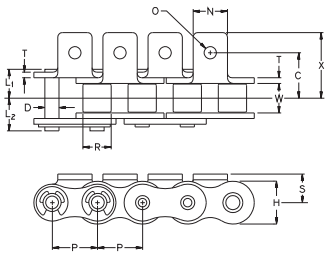
Hollow Pin Attachment Chain

Hollow-pin attachment styles allow for the insertion of through rods, which ultimately means more versatility in your conveyor design.

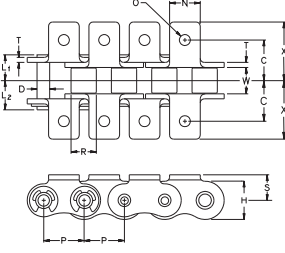
When versatility really matters

RS Single Pitch

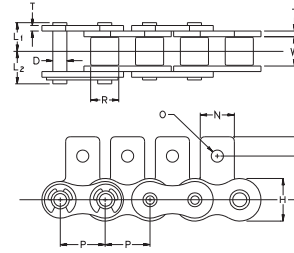
A-1 Attachment



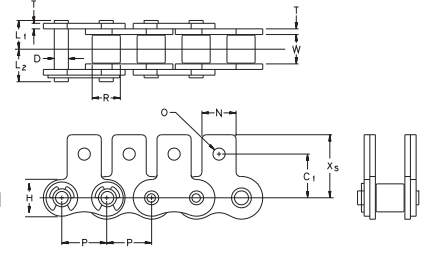
K-1 Attachment



SA-1 Attachment

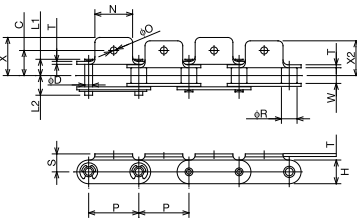


SK-1 Attachment

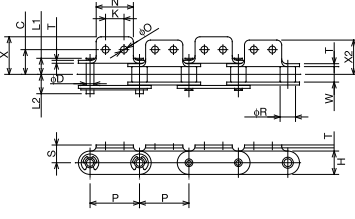


Double Pitch

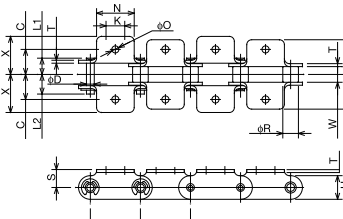
A-1 Attachment



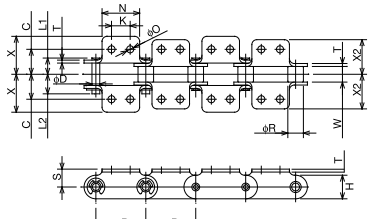
A-2 Attachment



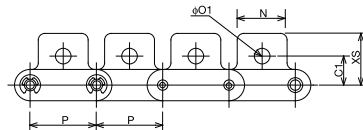
K-1 Attachment



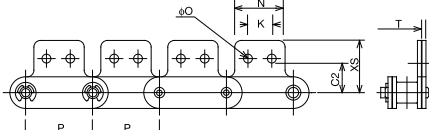
K-2 Attachment



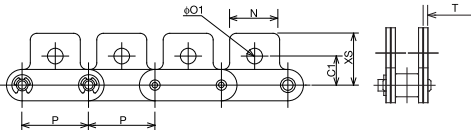
SA-1 Attachment



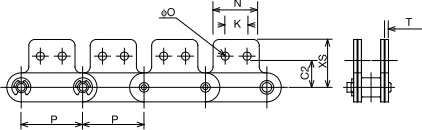
SA-2 Attachment



SK-1 Attachment



SK-2 Attachment



All dimensions in inches unless otherwise stated.

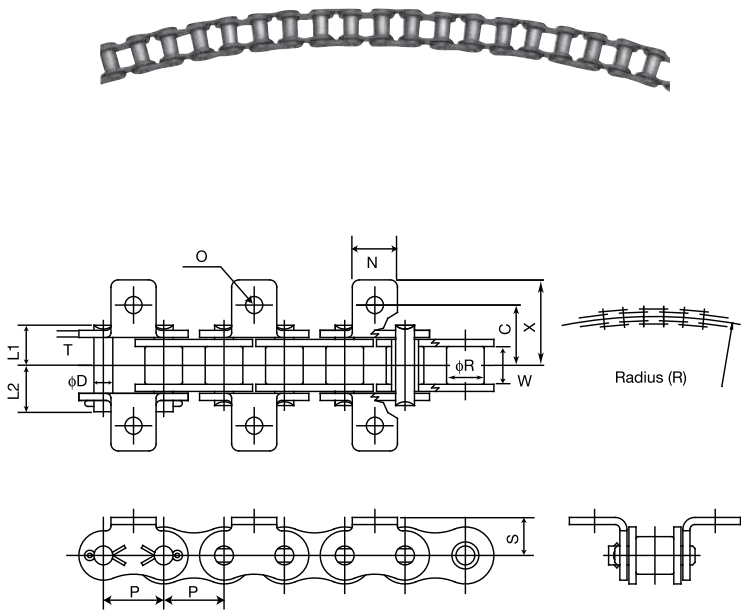
Chain Number	Chain Number	C	C ₁	C ₂	K	N	O	O ₁	S	T	X	X ₂	X _s	Weight per Attach. (lbs.)	
														A, SA Attachment	K, SK Attachment
RS40HP		0.500	0.500	-	-	0.374	0.141	-	0.314	-	0.700	-	0.685	0.004	0.009
RS50HP		0.625	0.625	-	-	0.500	0.204	-	0.405	-	0.921	-	0.907	0.006	0.013
RS60HP		0.750	0.720	-	-	0.625	0.204	-	0.468	-	1.110	-	1.057	0.015	0.031
RS80HP		1.000	0.968	-	-	0.751	0.267	-	0.625	-	1.440	-	1.395	0.028	0.057
C2040HP	C2042HP	0.500	0.437	0.535	0.374	0.751	0.142	0.205	0.358	0.059	0.759	0.692	0.779	0.007	0.013
C2050HP	C2052HP	0.625	0.562	0.625	0.468	0.937	0.205	0.268	0.437	0.078	0.952	0.866	0.680	0.013	0.026
C2060HP	C2062HP	0.844	0.688	0.751	0.562	1.125	0.205	0.343	0.578	0.094	1.240	1.137	1.291	0.037	0.075
C2080HP	C2082HP	1.094	0.874	1.000	0.751	1.500	0.268	0.406	0.751	0.125	1.602	1.468	1.594	0.070	0.141

Curved Attachment Chain

Curved attachment chain can adapt to a range of conveyor applications, as it can move products on a radius.

When flexibility really matters

RS Single Pitch



All dimensions in inches unless otherwise stated.

Chain Number	Pitch P	Roller Diameter R	Width Between Inner Link Plates W	Link Plate			Pin				Radius r	Average Tensile Strength (lbs.)	Maximum Allowable Load (lbs.)	Approximate Weight (lbs./ft.)
				Thickness T	Height H	Height h	Diameter D	Length L ₁ + L ₂	Length L ₁	Length L ₂				
RS35CU	0.375	*0.200	0.188	0.050	0.354	0.307	0.125	0.539	0.238	0.301	10	1,800	210	0.22
RS40CU	0.500	0.312	0.313	0.059	0.472	0.409	0.141	0.717	0.333	0.384	14	3,480	420	0.41
RS50CU	0.625	0.400	0.375	0.079	0.591	0.512	0.175	0.905	0.417	0.488	16	5,420	640	0.68
RS60CU	0.750	0.469	0.500	0.094	0.713	0.614	0.211	1.115	0.522	0.593	20	7,830	900	0.94
RS80CU	1.000	0.625	0.625	0.125	0.949	0.819	0.312	1.448	0.659	0.789	24	13,840	1,560	1.66

* Denotes that RS35CU is rollerless. The value shown is for the bushing diameter.

All dimensions in inches unless otherwise stated.

Chain Number	C	N	O	S	X	Weight per Attach. (lbs.)	
						A Attachment	K Attachment
RS35CU	0.375	0.311	0.102	0.250	0.571	0.002	0.003
RS40CU	0.500	0.374	0.141	0.315	0.709	0.004	0.009
RS50CU	0.626	0.500	0.205	0.406	0.933	0.007	0.013
RS60CU	0.750	0.625	0.205	0.469	1.122	0.015	0.031
RS80CU	1.000	0.752	0.268	0.626	1.461	0.029	0.057

Ordering Attachment Chain is Easy!

Attachment chain is available in carbon, nickel plated (NP), SS (304), AS (600), and Neptune (NEP) coated. Refer to page 6 and 8 for NP, SS, AS, and NEP properties.

Delivery Matrix

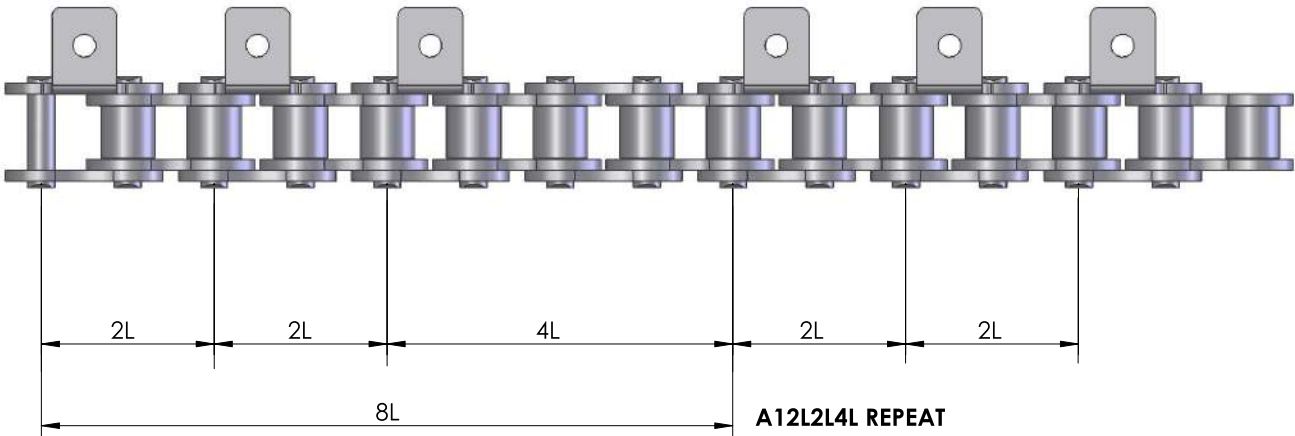
Quantity	Size Range	Delivery
Up to 100ft	35, 40, 50, 60, 80, 100, 120 C2040, C2050, C2060H, C2080H, C20100H, C2120H (includes oversized rollers)	Carbon – 3 Days AS Stainless Steel – 1 Week

Contact Tsubaki Inside Sales if your needs are outside the above product/quantity range.

Delivery is Fast!

To order attachment chain, please provide the following:

- 1) Size of chain (40, 50, C2062H)
- 2) Material
- 3) Rivet or Cotter Pin construction
- 4) Type of attachment
- 5) Spacing of attachment
Attachment spacing is counted as being the number of links (both inside and outside) up to and including the next attachment. In the non-standard spacing example below, initial spacing is every 2nd (2L) and then every 4th (4L). Each repeating section is 8 pitches (8L).
- 6) Overall length of chain



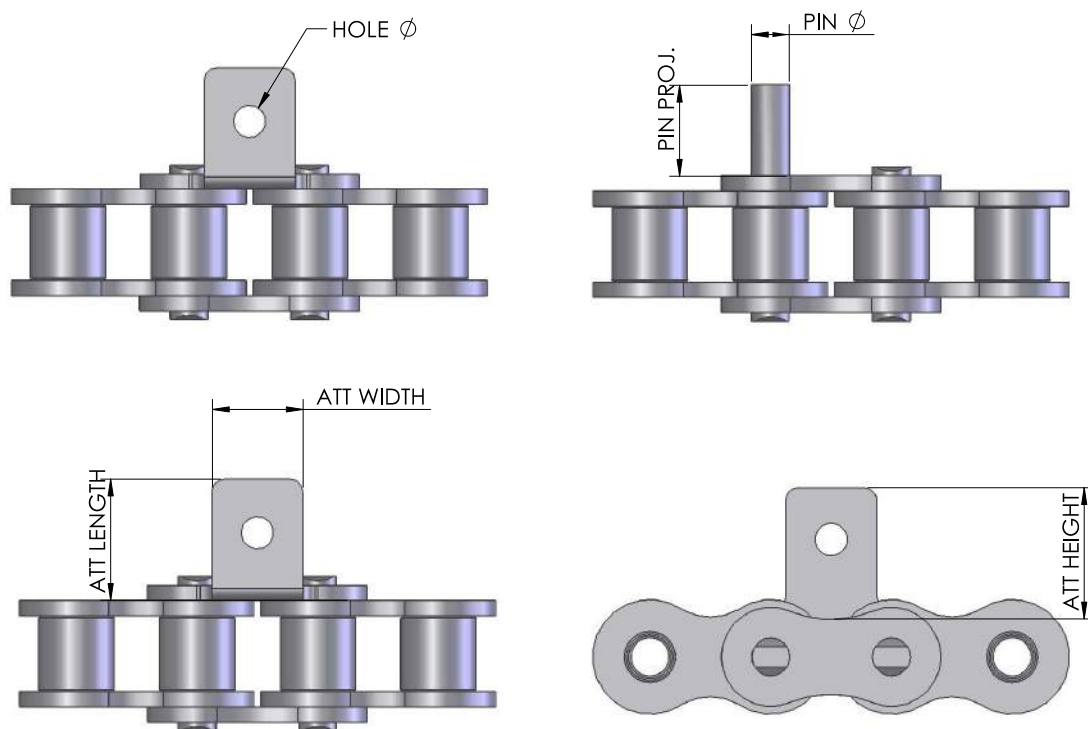
All standard attachment chain orders are to be confirmed with a schematic for the customer's review.

ANSI Special Attachments

In addition to providing standard attachment chain, Tsubaki of Canada can modify existing attachments to match your requirements. An example of this could be a shorter-than-standard pin or a larger hole diameter. If modifying standard attachments, delivery can be 1-2 weeks depending on the quantity.

When specifying non-standard attachments, information required is:

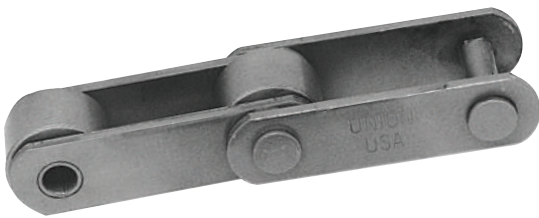
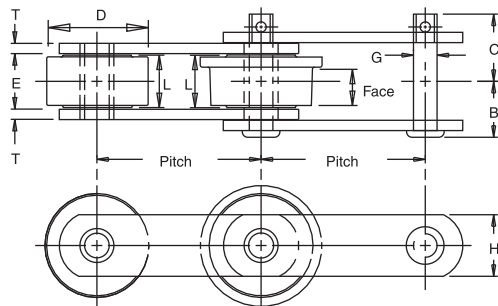
- tab length, width and possibly height
- hole diameter, and type of hole (threaded, countersunk)
- pin diameter, projection (extension) length, type of end (threaded, circlip groove)



All non-standard attachment quotes will be accompanied by a drawing for customer approval.

Engineering Class Roller Conveyor Chain

Roller Conveyor Plain Chain



All dimensions are in inches unless otherwise indicated.

Chain No.	Pitch	Width			Roller				Pin			Sidebar			Bushing	Bear- ing Area (in ²)	Avg. Ult. Stgth. (lbs.)	Max. Work Load (lbs.)	Approx. Wgt. (lbs./ft.)
		Pin Head to CL	Pin End to CL	In- side	Dia.	Lgth.	Sty.	Matl. ¹	Dia.	Sty.	Matl. ¹	Hgt.	Th.	Matl. ¹	Matl. ¹				
		B	C	E	D	L			G			H	T						
*81X	2.609	.91	1.16	1.06	.91	1.00	T	CCH	.44	K	CCH	1.13	.16	CHT	CCH	.61	24,000	3,480	2.4
*53R	3.000	1.03	1.25	1.00	1.50	.97	T	PMHT	.44	A	CHT	1.13	.19	CRS	ACH	.61	13,000	2,100	3.9
*94R	4.000	1.11	1.30	.88	1.50	.81	T	PMHT	.50	A	CHT	1.25	.25	CRS	ACH	.61	19,000	2,400	4.1
*89R	4.000	1.59	1.88	1.31	2.25	1.25	T	CCH	.63	A	CHT	1.50	.38	HC	CCH	1.10	28,000	4,500	10.6
*604R	6.000	1.33	1.58	1.31	2.00	1.25	T	CCH	.56	A	CHT	1.50	.25	HC	ACH	1.01	21,000	3,500	5.4
*607R	6.000	1.33	1.58	1.31	2.50	1.25	T	CCH	.56	A	CHT	1.50	.25	HC	ACH	1.01	21,000	3,500	6.5
*627R	6.000	1.47	1.75	1.31	2.00	1.25	T	CCH	.63	A	CHT	1.50	.31	HC	ACH	1.22	26,000	4,250	6.6

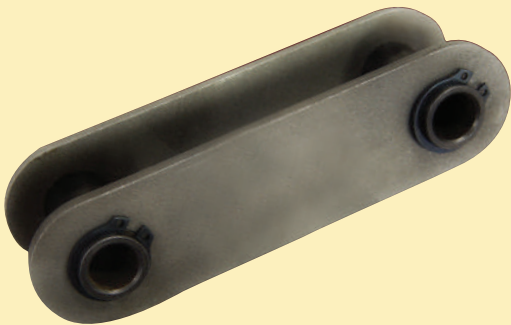
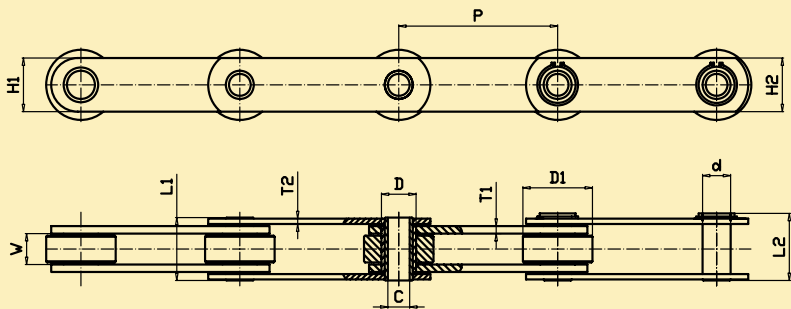
Dimensions shown are nominal. Obtain certified prints for design and construction.

*Indicates this chain is normally stocked. All others are made-to-order.

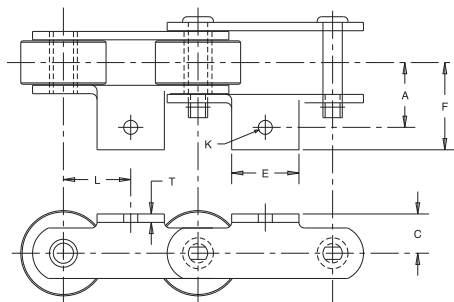
¹Material: CHT = Carbon heat-treated; CCH = Carbon case hardened; AHT = Alloy heat-treated; CRS = Cold rolled steel; AIHT = Alloy iron heat-treated; ACH = Alloy case hardened; HC = High carbon; PMHT = Powdered metal heat-treated.

British Standard Hollow Pin Chain

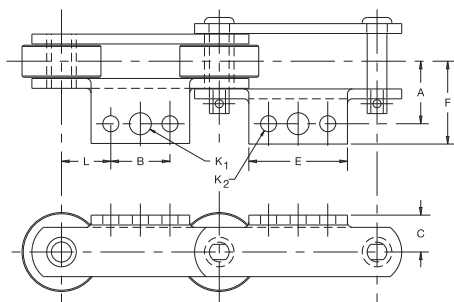
Contact Tsubaki for your specific needs.



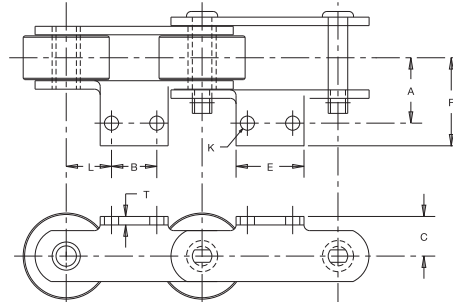
A-1 Attachment



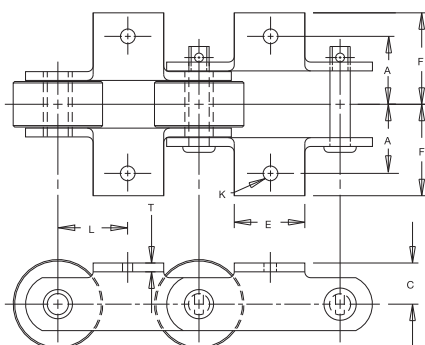
A-1/A-2 Attachment



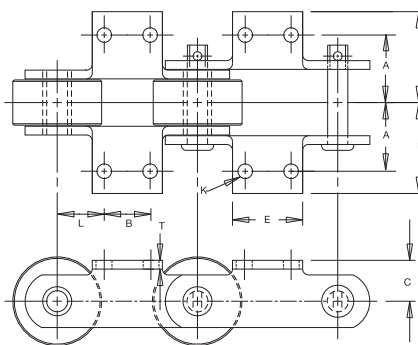
A-2 Attachment



K-1 Attachment



K-2 Attachment



All dimensions are in inches unless otherwise indicated.

Attachment Number	Chain Number	Bolt Diameter									Approx. Weight (lbs./ft.)
		A	B	C	E	F	K ₁	K ₂	L	T	
A-1	53R	1.47	—	.81	2.00	2.16	.31	—	1.50	.19	4.4
	89R	2.00	—	1.25	2.00	3.17	.38	—	2.00	.38	11.0
	94R	1.38	—	.88	2.50	1.88	.38	—	2.00	.25	4.7
	604R	2.00	—	1.13	3.50	2.72	.38	—	3.00	.25	6.3
	607R	2.00	—	1.13	3.50	2.70	.38	—	3.00	.25	7.4
A-1/A-2	53R	1.47	1.06	.81	2.00	2.16	.31	.25	.97	.19	4.4
	94R	1.38	1.50	.88	2.50	1.88	.38	.38	1.25	.25	4.7
A-2	53R	1.47	1.06	.81	2.00	2.16	.25	—	.97	.19	4.4
	94R	1.38	1.50	.88	2.50	1.88	.38	—	1.25	.25	4.7
	604R	2.00	2.00	1.13	3.50	2.72	.38	—	2.00	.25	6.0
	607R	2.00	2.00	1.13	3.50	2.72	.38	—	2.00	.25	6.9
	627R	2.00	2.00	1.13	3.50	2.80	.38	—	2.00	.31	8.5
K-1	53R	1.47	—	.81	2.00	2.16	.31	—	1.50	.19	4.9
	89R	2.00	—	1.25	2.00	3.17	.38	—	2.00	.38	13.0
	94R	1.38	—	.88	2.50	1.88	.38	—	2.00	.25	5.3
	604R	2.00	—	1.13	3.50	2.72	.38	—	3.00	.25	7.2
	607R	2.00	—	1.13	3.50	2.78	.38	—	3.00	.25	8.3
K-2	53R	1.47	1.06	.81	2.00	2.16	.25	—	.97	.19	4.9
	94R	1.38	1.50	.88	2.50	1.88	.38	—	1.25	.25	5.3
	604R	2.00	2.00	1.13	3.50	2.72	.38	—	2.00	.25	7.0
	607R	2.00	2.00	1.13	3.50	2.72	.38	—	2.00	.25	7.4
	627R	2.00	2.00	1.13	3.50	2.80	.38	—	2.00	.31	10.7

Note: Some A-1 attachments are supplied with three holes. Use the center hole.

Style "A" attachments are furnished on the cottered side as standard. If requested, they can be furnished on the opposite side of the chain.



Never underestimate the value of a great chain

Whatever your industry, whatever your application, the Tsubaki Advantage is well documented. In fact, Tsubaki of Canada Limited records the actual cost savings to our customers after switching to a Tsubaki value-added product. **As of this catalog's print date, overall, the Tsubaki Advantage has saved these customers a total of \$2,000,067 (Cdn).**

Food Industry Specific Special Chains

Bakery

Proofer Chains 19

Meat

Gripper Chains™ 20

Vacuum Wrapper Chain 20

Red Meat Processing Chains 21

Dairy / Ice Cream

Dairy Case Conveyor Chain 22

Hardener Chain 22

Tunnel Freezer Chain 23

Food Processing

Can Feeder Chain 24

Can Closer Chain 25

Chocolate & Confectionary

Chocolate Forming Chain 26

Cornstarch Line Chain 27

More Than Just Chain... 28

Technical Services 29



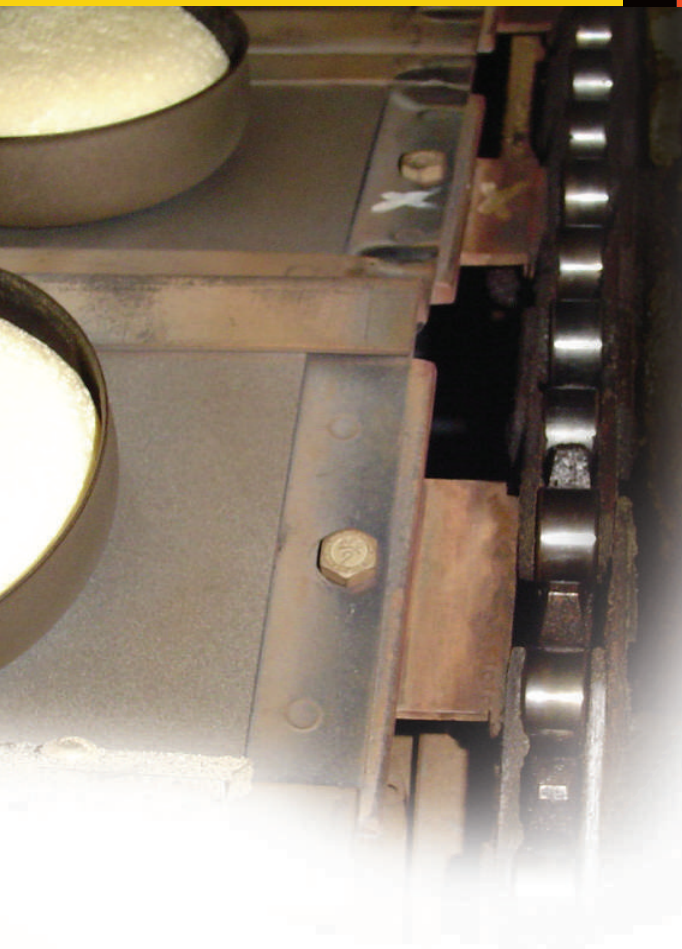
Heat and humidity can take their toll on chain. Tsubaki has designed products that perform in these intense environments, while retaining a low-maintenance and contamination-free operation.

COST SAVINGS!

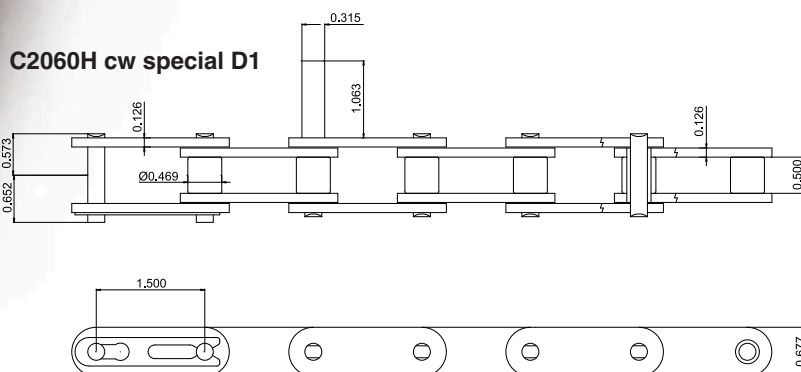
Application: Proofer drive
Savings: \$1,002.59 in 5.1 months
Tsubaki solution: Customer used premium Tsubaki RS drive chain versus a low-cost drive chain.

When stamina really matters

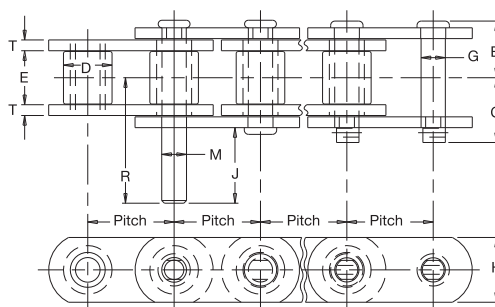
It really mattered to this Tsubaki customer



Proofer Chains



Proofer Oven Chain 20002



All dimensions are in inches unless otherwise indicated.

Chain Number	Pitch	Pin Head to CL	Pin End to CL	Roller Dia.	Inside Width	Pin Dia.	Sidebar		Attachment			Average Ultimate Strength (lbs.)	Max. Work Load (lbs.)	Approx. Weight (lbs./ft.)
		B	C	D	E	G	H	T	M	J	R			
20002	2.000	1.31	1.50	1.13	1.25	.56	1.50	.25	.57	1.75	2.91	21,000	3,500	6.2

Note: Extended pins either every 14th or 18th pitch.

To locate compatible sprockets for your chain, refer to the Product Cross-Reference at the back of this section.

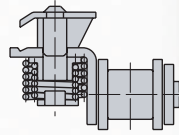
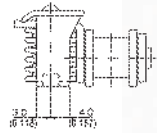
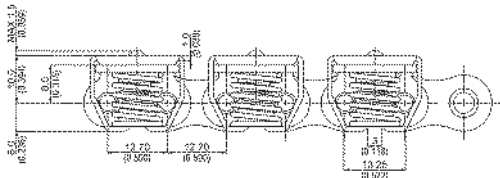
Note: Dimensions are subject to change. Contact Tsubaki Technical Support to obtain certified prints for design and construction.

When ruggedness really matters

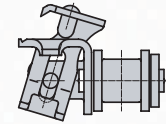
Gripper Chains™

TYPE S

RS08BNPKUTS Gripper Chain™



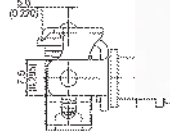
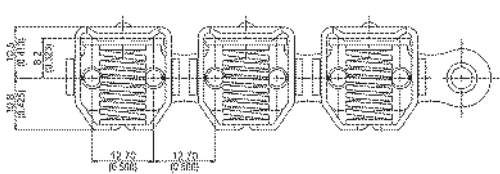
Types S



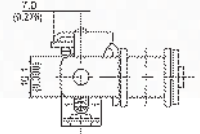
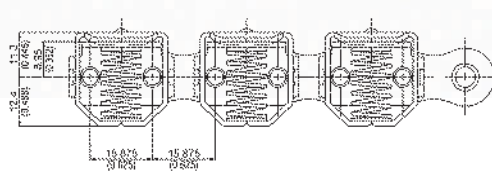
Type M

TYPE M

RS08BNPKUTM Gripper Chain™



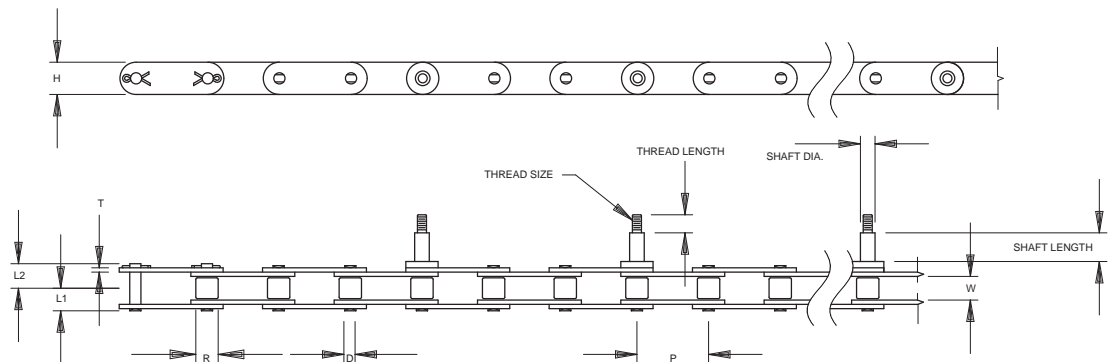
RS10BNPKUTM Gripper Chain™



ISO Ref.	Chain No.	Connecting Link	Pitch		Roller Dia.		Inside Width		Clamp Type	Clamping Force	Materials		
			mm	in.	mm	in.	mm	in.			Base Chain	Clamp	Spring
08B-1	RS08BNPKUTM	RS08BNPKUTMCL	12.7	.500	8.51	.335	7.75	.305	Type M	50	NP	304SS	SA
10B-1	RS10BNPKUTM	RS10BNPKUTMCL	15.9	.625	10.16	.400	9.65	.380	Type M	70	NP	304SS	SA
08B-1	RS08BNPKUTS	RS08BNPKUTSCL	12.7	.500	8.51	.335	7.75	.305	Standard	55	NP	304SS	SA

Above items, 1-2 week delivery. NP = Nickel-Plated Steel Available in Stainless Steel and Lambda.

Vacuum Wrapper Chain



Chain No.	Roller Pitch	Dia.	Width Between Roller Link Plates	Pin							Link Plate		Approx. Weight (lbs/ft)	No. of Links per 10 ft.
				D	L ₁	L ₂	Thread	Thread Length	Shaft Dia.	Shaft Length (not including threads)				
	P	R	W								T	H		
STANDARD ROLLER TYPE														
C2100HNP	2.500	.750	.750	.375	.858	.965	M8	0.63	0.506	1.00	.187	1.126	2.38	48
C2120HNP	3.000	.875	1.000	.437	1.061	1.203	M10	0.70	0.629	1.09	.219	1.354	3.41	40
C2160HNP	4.000	1.125	1.250	.562	1.337	1.514	M10	0.75	0.787	1.06	.281	1.898	6.02	30

Contact Tsubaki for Cryovac® Machine Crossover.

Application:

Gas pit

Savings:

\$879.64 in 13.8 months, to date and counting

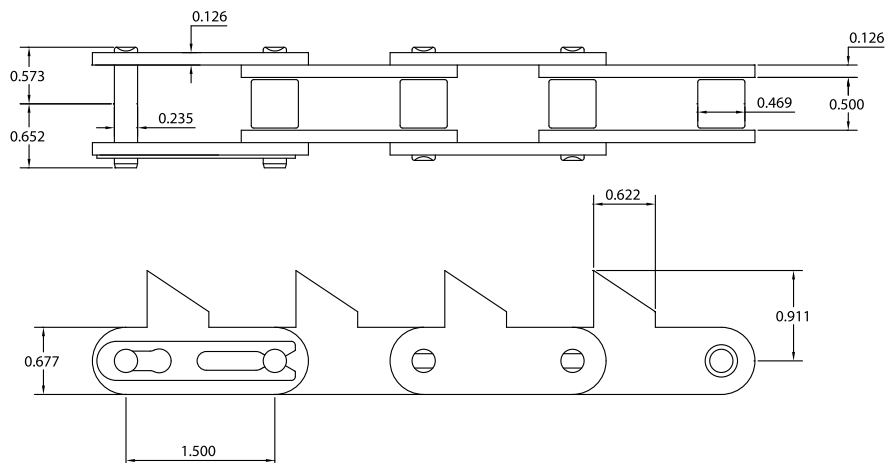
Tsubaki solution:

Poultry-processing operation replaced OEM chain with Tsubaki Lambda self-lubricating chain.

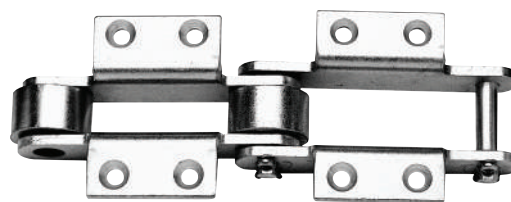
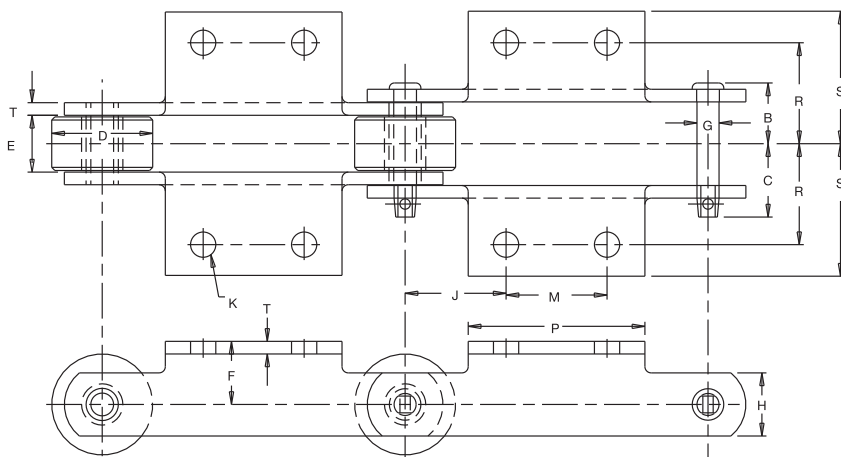
It really mattered to this Tsubaki customer

Red Meat Processing Chains

Loin Puller Chain C2060HAS cw Special SK0



DS Series Chain



All dimensions are in inches unless otherwise indicated.

Chain Number	Pitch	Chain Width		Inside Width		Roller		Pin		Sidebar		Bushing	Attachment						Bolt Dia.	Avg. Ult. Stgth. (lbs.)	Max. Work Load (lbs.)	Approx. Weight (lbs./ft.)
		B	C	E	D	Matl. ²	G	Matl. ²	H	T	Matl. ²		P	M	J	R	S	F	K			
DS-1113 ¹	4.04	1.47	1.75	1.31	2.00	AHT	.63	CHT	1.50	.31	HC	SSHT	2.88	1.50	1.27	2.06	2.77	1.25	.38	26,000	3,150	11.4
DS-196R	6.00	1.20	1.45	1.13	2.00	CCH	.44	CHT	1.25	.25	HC	SSHT	3.50	2.00	2.00	2.00	2.63	1.25	.38	18,000	1,950	7.5
DS-6272 ¹	6.00	1.47	1.75	1.31	2.25	PMHT	.63	CHT	1.50	.31	HC	SSHT	3.50	2.00	2.00	2.00	2.64	1.38	.38	26,000	3,150	9.2

DS-6272 furnished with counter sunk attachment holes.

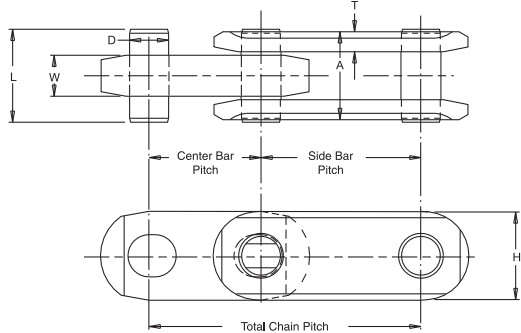
²Material: CCH = Carbon case hardened; CHT = Carbon heat-treated; HC = High carbon; SSHT = Stainless steel heat-treated; AHT = Alloy heat-treated; PMHT = Powdered metal heat-treated.

Notes: DS Series Chains have zinc-plated sidebars, pins, and rollers. The bushings are heat-treated stainless steel.

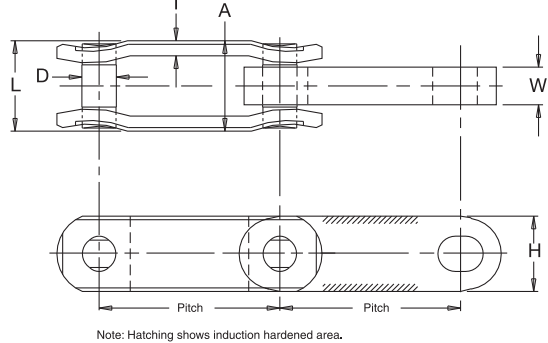
When insight really matters

Dairy Case Conveyor Chain

DF-3498



DF-3500 and DF-3910

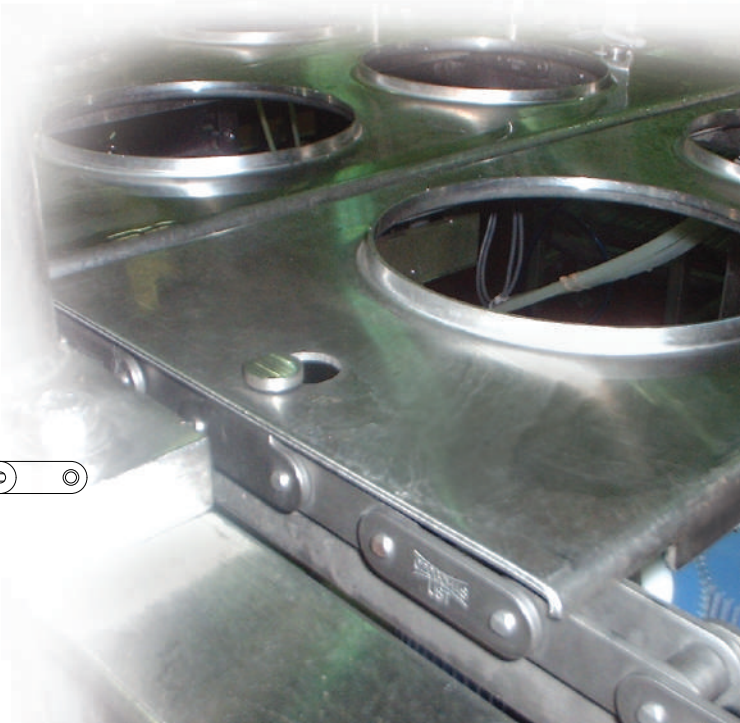


All dimensions are in inches unless otherwise indicated.

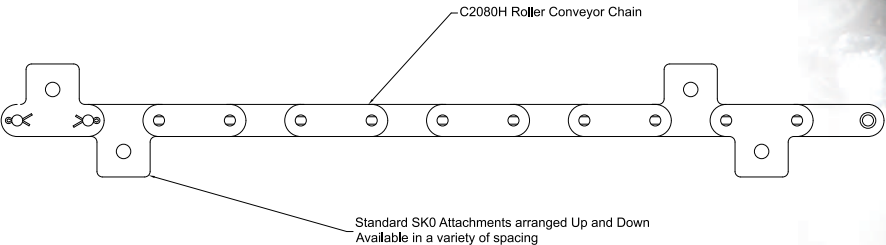
Chain Number	Chain Width			Link Plate		Pin		Minimum Flex Radius	Average Tensile Strength (lbs.)	Maximum Allowable Work Load (lbs.)	Approx. Weight (lbs./ft.)
	Pitch	Overall Width	Width of Inner Link								
		A	W	T	H	D	L				
DF-3498	1.750 2.500	1.45	.64	.31	1.40	.63	1.45	18.00	50,000	4,000	3.9
DF-3500	2.500 3.000	1.50	.63	.25	1.25	.57	1.46	20.00	48,000	4,000	3.3
DF-3910	3.000 3.000	1.50	.63	.25	1.25	.57	1.46	22.00	48,000	4,000	3.3

Note: Dimensions are subject to change. Contact Tsubaki to obtain certified prints for design and construction.

Hardener Chain



Ice Cream Hardener Chain C2080H cw SK1



COST SAVINGS!

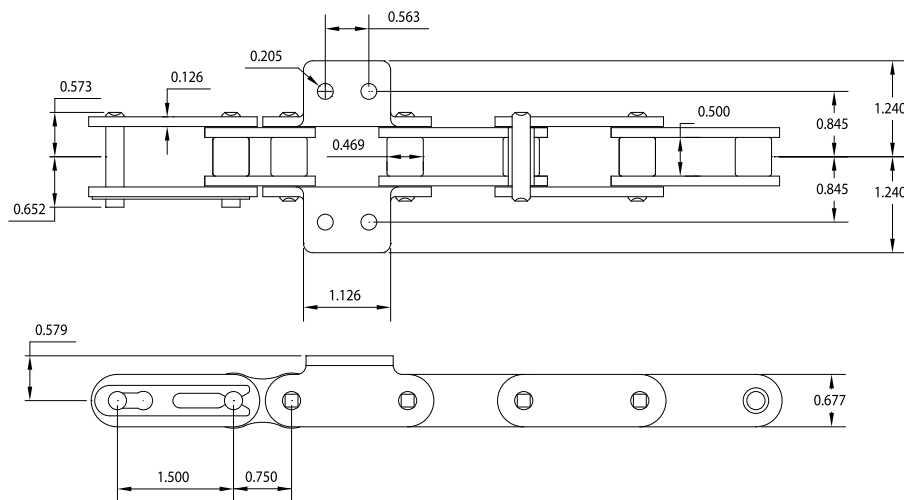
Application: Dessert-forming conveyor
Savings: \$2,249.62 in 13 months
Tsubaki solution: Replaced standard nickel-plated chain with Tsubaki Lambda attachment chain.

It really mattered to this Tsubaki customer

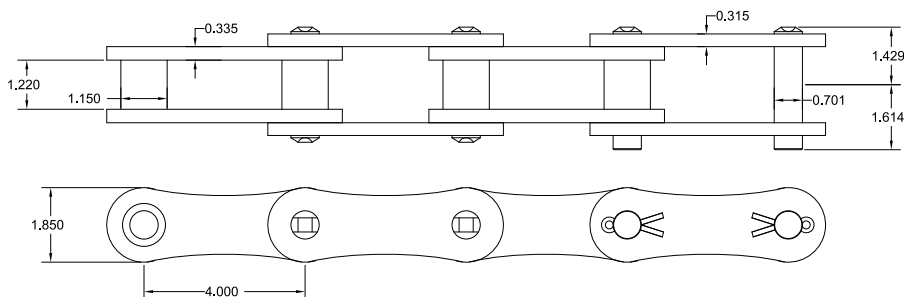


Tunnel Freezer Chain

Freezer Tunnel Chain C2060H/60HAS cw K2

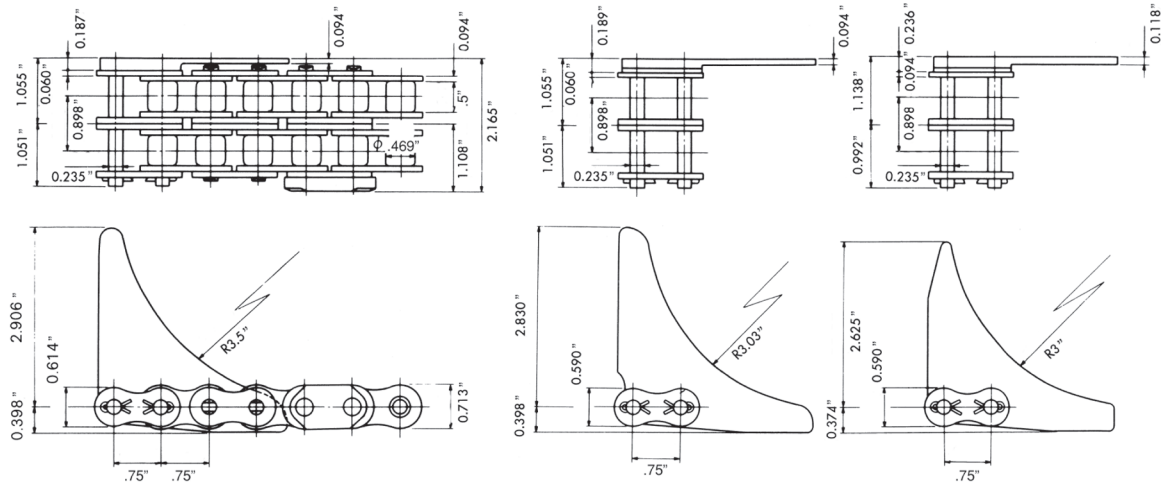


Spiral Freezer Chain RS2032B-T-NEP

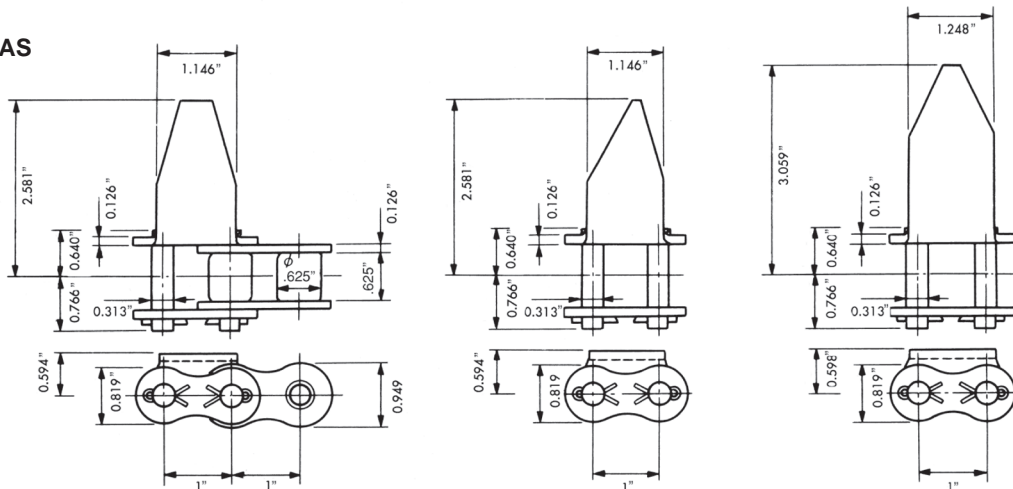


Can Feeder Chain

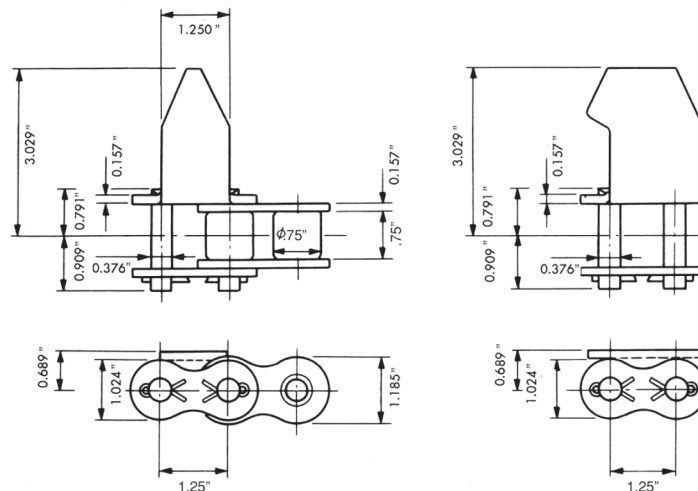
Chain No. RS60-2 AS



Chain No. RS80AS



Chain No. RS100AS

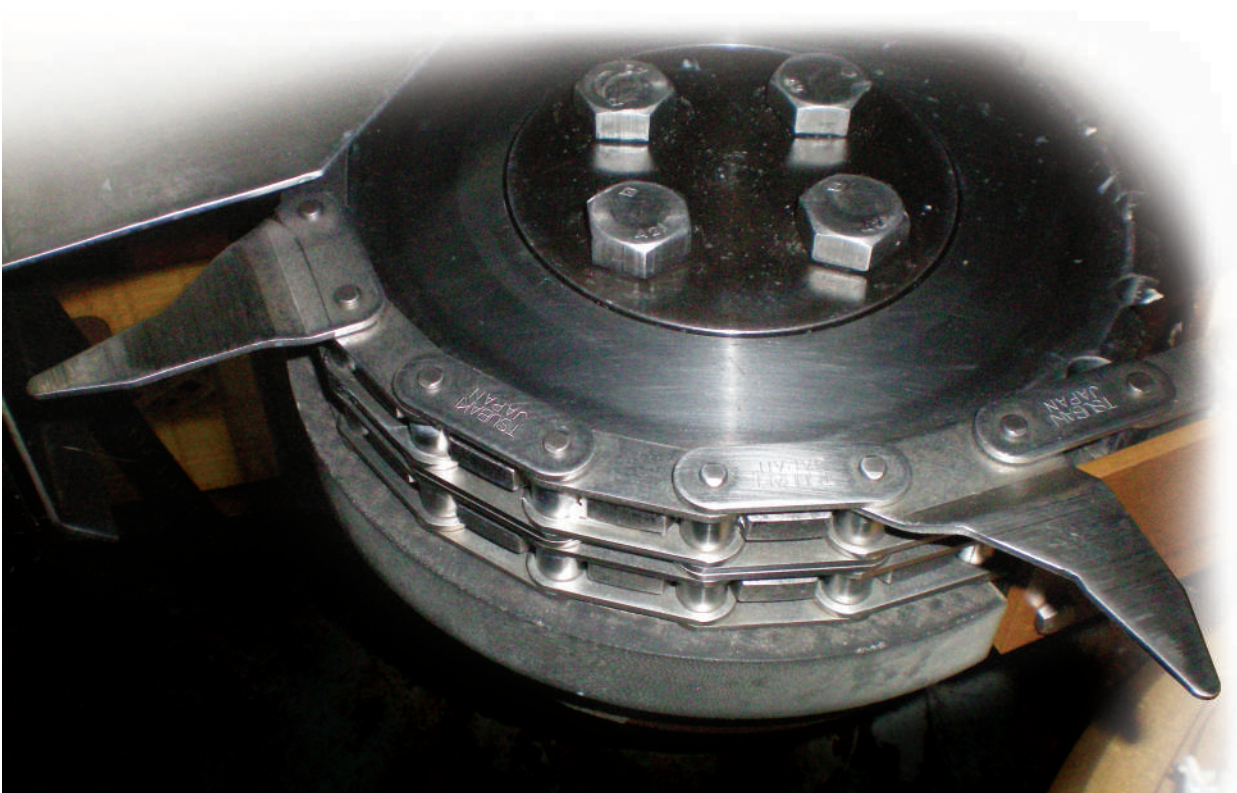
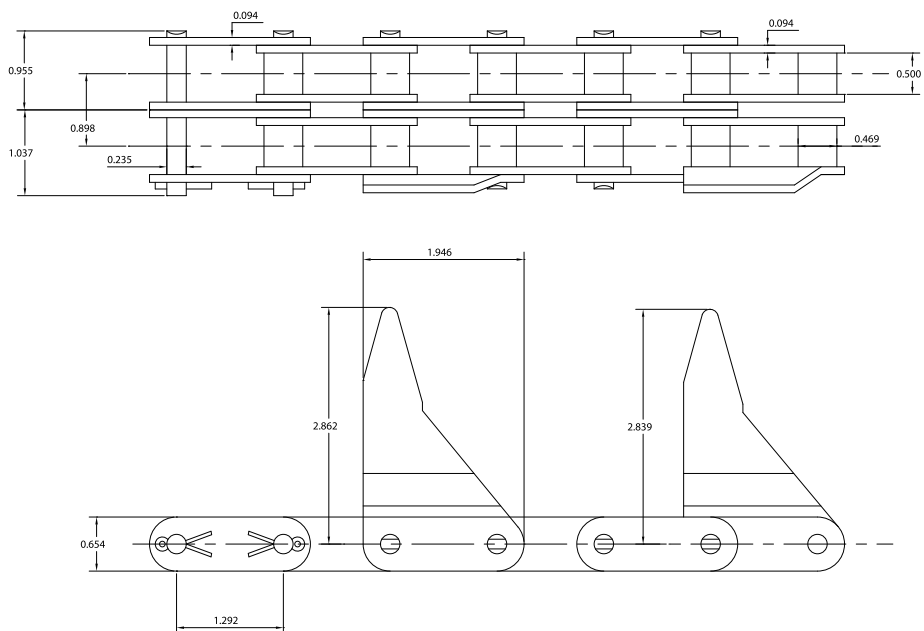


Application: Slicer/sizer
Savings: \$7,340.03 in 10.1 months
Tsubaki solution: Used high-strength, corrosion-resistant Tsubaki Neptune drive chain to replace stainless-steel chain.

It really mattered to this Tsubaki customer

Can Closer Chain

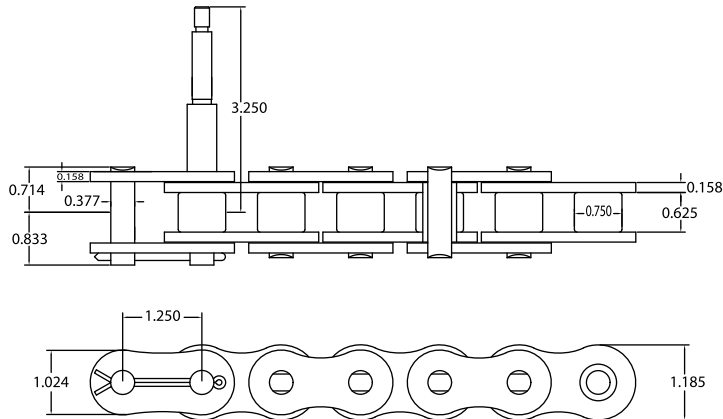
RFP=1.292 c/w Special SK0



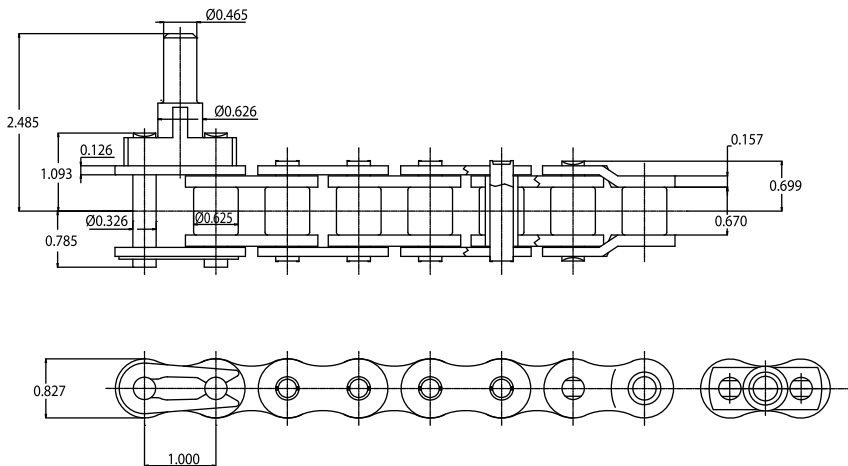
When precision really matters

Chocolate Forming Chain

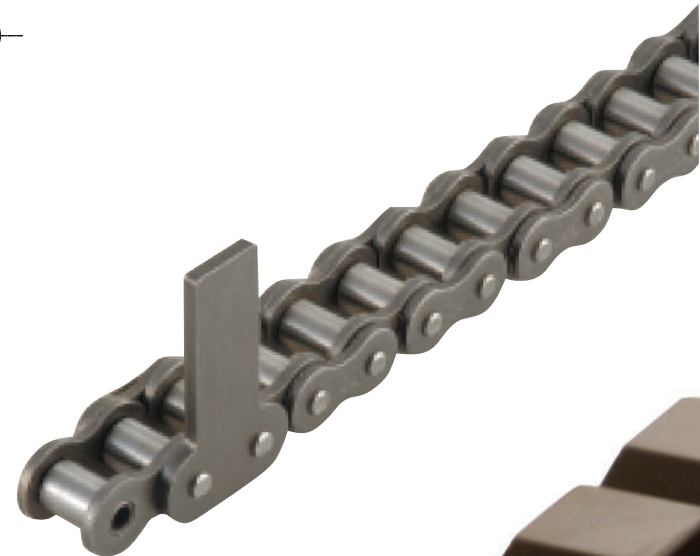
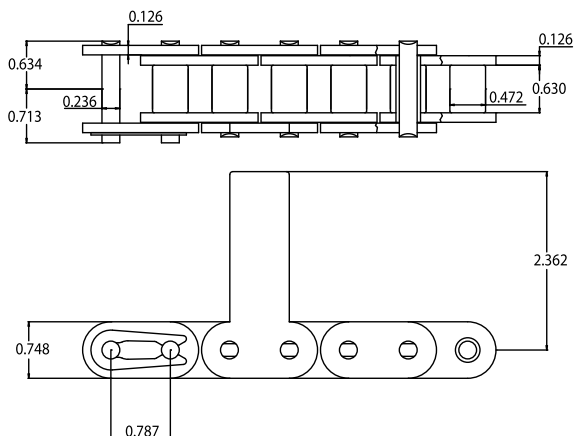
RS100 cw Special D1



RS16B cw Special D5



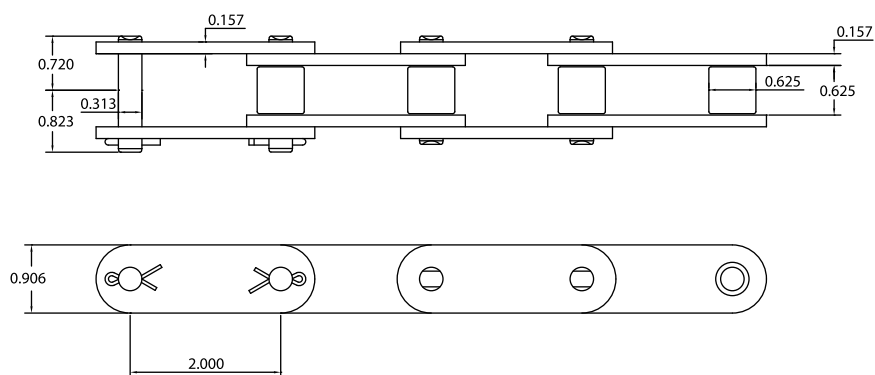
RFP=0.797 cw Special SK0





Cornstarch Line Chain

C2082H cw Special
Pressure Relief Sprocket



More Than Just Chain...

More than a respected name; more than exceptional chain

Tsubaki is more than the world's premier supplier of industrial chain. We're your ultimate source for related products. The same commitment to quality, innovation and performance that built our good name stands behind our entire line of products. In the food-processing industry, we convey value.



Sprockets

Made in Canada. Tsubaki's ISO-certified facility can meet your demands, no matter how unique. Bore options include finished, bushing style, powerlock, splined, split, square, hex and other custom combinations. Tsubaki offers a wide range of materials and surface finishes, including the best suited carbon steels, different types of stainless, nickel and zinc plating. Trust the world's largest chain manufacturer to know the correct hardness levels for your sprocket teeth.

Powerlock – keyless locking device

End your high-machining expenses for long-shaft keyways, splined shafts, threads, grooves and steps. The Tsubaki Powerlock offers exacting, slip-free location. Eliminate backlash damage to keyways from heavy loads; the Powerlock fits tightly around the shaft/hub and is not affected by load reversals.

Shock relay – the electronic shear pin

Protect your equipment and investment. Unexpected shock loads can damage chains, drives, gears, bearings — entire mechanical assemblies. When shock relay detects a problem, it shuts down the line quickly, safely and securely. After the problem is corrected, the shock relay is reset with the touch of a button. No tear down is required. That means improved efficiency, reduced downtime and big savings in both time and money.

Hypoid gearmotor

Tsubaki hypoid is designed with your application in mind. Compact and efficient, Tsubaki hypoid allows for great flexibility in layout design. Face mount and hollow shaft types can be provided complete with an inverter for ready installation.

Technical Services

At Tsubaki, we support what we sell. This means that we are your partner in reducing downtime, lowering maintenance costs and increasing productivity. Not everyone can say that. Tsubaki's Technical Services staff is available for on-site inspections and will recommend the best solution for your application. We can also tailor our in-house seminar workshops to your individual needs.

Our services include the following:

Maintenance Seminars

- Professional Audio-Video Presentation.
- Hands on Learning.
- Certificate of Attendance.
- Course Material Handout Package.
- Metal Chain Wear Scale.
- Group Picture.

Site Surveys

- Two-Person Teams from Tsubaki.
- Chain Identification and Drawing.
- Wear Life Estimate.
- Identify Condition and Critical Points.
- Establish Regular Follow-Up Schedule.
- Report will be provided within 1 week of survey completion.

Application Troubleshooting and/or Wear Analysis

- Tsubaki Technical Services Staff Site Visit.
- Initial Evaluation.
- Full report will be provided within 48 hours of completion of site visit including selection verification.

Facility Tour and Full Day Seminars

Sprocket Manufacturing Facility Tour:

- Learn the techniques and processes used in sprocket production.

Various Seminar Topics Available:

- Maintenance
 - Troubleshooting
 - Basic and Advanced Product Selection
 - Chain Academy (Basic School)
- (Meals / snacks / beverages may be provided).

Failure and/or Wear Analysis

- A full report will be provided within 48 hours and will include photos, failure / wear causes, effects and solutions.
- If more time (ie. over 48 hours) is required to complete the final report, we will provide the findings to date in a preliminary report.

Sample Identification

- Chain Number and Sketch.

Chain Selection

Simple Selection:

A report that indicates selection process only.

Intermediate Selection:

Detailed Report.
Drawing of Selected Product.
Calculations.
Double Check Sign Off.

Advanced Selection (includes all of above plus:)

Expected Life Estimate.
Maintenance Requirements and Schedule.

Tsubaki of Canada Limited
1630 Drew Road, Mississauga, ON L5S 1J6, CANADA
Tel: 905-676-0400 Fax: 905-676-0904 Toll-Free: 800-263-7088
www.tsubaki.ca e-mail: info@tsubaki.ca

U.S. Tsubaki, Inc.
301 E. Marquardt Drive, Wheeling, IL 60090-6497, U.S.A.
Tel: 847-459-9500 Fax: 847-459-9515
www.ustsubaki.com

CanadaFood09

NOTE: In accordance with the policy of Tsubaki of Canada Limited to consistently improve its products, the specifications in this catalogue are subject to change without notice. Please contact Tsubaki for current prices.

Printed in Canada May 2009

Copyright © 2009 Tsubaki of Canada Limited. Errors and Omissions Excepted.

Disclaimer: Tsubaki of Canada Limited makes every effort to ensure that the information in this catalogue is current and accurate, but cannot accept responsibility or liability for any loss or damage suffered as a result of information contained herein.

