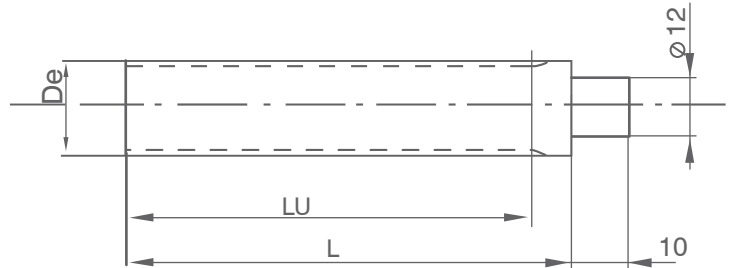
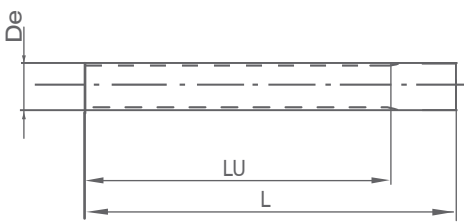


HTP *Standard toothed bars*



HTP 3M

Spfcctn	Z	Dp	De	Lu	L
9-3M	9	8.59	7.83	75	100
10-3M	10	9.55	8.79	75	100
11-3M	11	10.50	9.74	75	100
12-3M	12	11.46	10.70	100	125
13-3M	13	12.41	11.65	100	125
14-3M	14	13.37	12.61	100	125
15-3M	15	14.32	13.56	100	125
16-3M	16	15.28	14.52	125	155
17-3M	17	16.23	15.47	125	155
18-3M	18	17.19	16.43	125	155
19-3M	19	18.14	17.38	125	155
20-3M	20	19.10	18.34	150	165
21-3M	21	20.05	19.25	150	165
22-3M	22	21.01	20.25	150	165
23-3M	23	21.96	21.20	150	165
24-3M	24	22.92	22.16	150	165
25-3M	25	23.87	23.11	150	165
26-3M	26	24.83	24.07	150	165
27-3M	27	25.78	25.02	150	165
28-3M	28	26.74	25.98	150	165
29-3M	29	27.69	26.93	150	165
30-3M	30	28.65	27.89	175	183
31-3M	31	29.60	28.84	175	183
32-3M	32	30.56	29.80	175	183
33-3M	33	31.54	30.75	175	183
34-3M	34	32.47	31.71	175	183
35-3M	35	33.42	32.66	175	183
36-3M	36	34.38	33.62	200	200
37-3M	37	35.33	34.57	200	200
38-3M	38	36.29	35.53	200	200
39-3M	39	37.24	36.48	200	200
40-3M	40	38.20	37.44	200	200
42-3M	42	40.11	39.34	200	200
44-3M	44	42.02	41.26	200	200
45-3M	45	42.97	21.21	200	200
48-3M	48	45.84	45.08	200	200
50-3M	50	47.75	46.99	200	200
52-3M	52	49.66	48.90	200	200
54-3M	54	51.57	50.81	200	200
56-3M	56	53.48	52.72	200	200
60-3M	60	57.30	56.54	200	200
62-3M	62	59.21	58.45	200	200
64-3M	64	61.12	60.36	200	200
66-3M	66	63.03	62.27	200	200
68-3M	69	64.94	64.18	200	200
70-3M	70	66.85	66.09	200	200
72-3M	72	68.75	67.99	200	200

HTP 5M

Spfcctn	Z	Dp	De	Lu	L
12-5M	12	19.10	17.96	150	165
13-5M	13	20.69	19.55	150	165
14-5M	14	22.28	21.14	175	183
15-5M	15	23.87	22.73	175	183
16-5M	16	25.46	24.32	175	183
17-5M	17	27.06	25.92	175	183
18-5M	18	28.65	27.51	200	200
19-5M	19	30.24	29.10	200	200
20-5M	20	31.83	30.69	200	200
21-5M	21	33.42	32.28	200	200
22-5M	22	35.01	33.87	200	200
23-5M	23	36.61	35.47	200	200
24-5M	24	38.20	37.06	200	200
25-5M	25	39.79	38.65	200	200
26-5M	26	41.38	40.24	200	200
27-5M	27	42.97	41.83	200	200
28-5M	28	44.56	43.42	200	200
29-5M	29	46.15	45.01	200	200
30-5M	30	47.75	46.60	200	200
31-5M	31	49.24	48.20	200	200
32-5M	32	50.93	49.79	200	200
33-5M	33	52.52	51.38	200	200
34-5M	34	54.11	52.97	200	200
35-5M	35	55.70	54.56	200	200
36-5M	36	57.30	56.16	200	200
38-5M	38	60.48	59.34	200	200
40-5M	40	63.66	62.52	200	200
42-5M	42	66.85	65.71	200	200
44-5M	44	70.03	68.89	200	200
45-5M	45	71.62	70.48	200	200
46-5M	46	73.21	72.07	200	200
48-5M	48	76.39	75.25	200	200
50-5M	50	79.58	78.43	200	200
54-5M	54	85.94	84.80	200	200
60-5M	60	95.49	94.35	200	200
62-5M	62	98.68	97.54	200	200
72-5M	72	114.59	113.45	200	200

Special Note

We can also supply the flanges of the above timing belt pulleys separately. The customers can order flanges according to the corresponding pulleys part numbers.