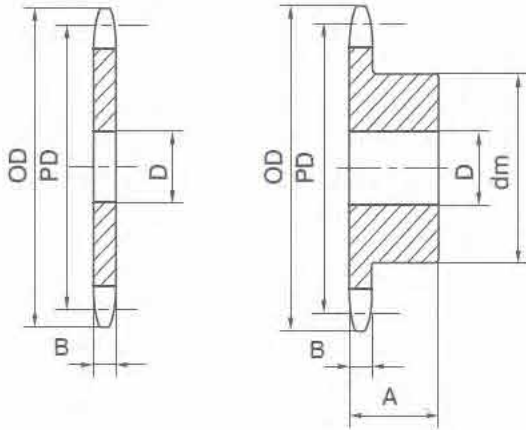


Sprockets

ISO1275-1984

double pitch precision roller chains and chainwheels for transmission and conveyors



S2040		P=25.4 B=7.20 ROLLER=∅ 7.95				
Z		OD	D	PD	dm	A
15	7 1/2	67	12	62.45	45	30
17	8 1/2	76	12	70.31	50	30
18	9	80	12	74.26	52	30
19	9 1/2	84	12	78.23	56	30
20	10	88	12	82.20	60	40
21	10 1/2	92	14	86.17	64	40
22	11	96	14	90.16	68	40
23	11 1/2	100	14	94.15	70	40
24	12	104	14	98.14	70	40
25	12 1/2	108	14	102.14	70	40
26	13	112	16	106.14	70	40
27	13 1/2	116	16	110.14	70	40
28	14	120	16	114.15	70	40
29	14 1/2	124	14	118.16	80	40

S2060		P=38.1 B=11.60 ROLLER=∅ 11.91				
Z		OD	D	PD	dm	A
15	7 1/2	101	16	93.67	70	40
17	8 1/2	113	16	105.47	80	40
18	9	119	16	111.40	80	40
19	9 1/2	126	16	117.34	80	40
20	10	132	16	123.30	80	45
21	10 1/2	138	20	129.26	90	45
22	11	144	20	135.24	90	45
23	11 1/2	150	20	141.22	90	45
24	12	156	20	147.21	90	45
25	12 1/2	162	20	153.20	90	45
26	13	168	20	159.20	95	45
27	13 1/2	174	20	165.21	95	45
28	14	181	20	171.22	95	45
29	14 1/2	187	20	177.23	95	45

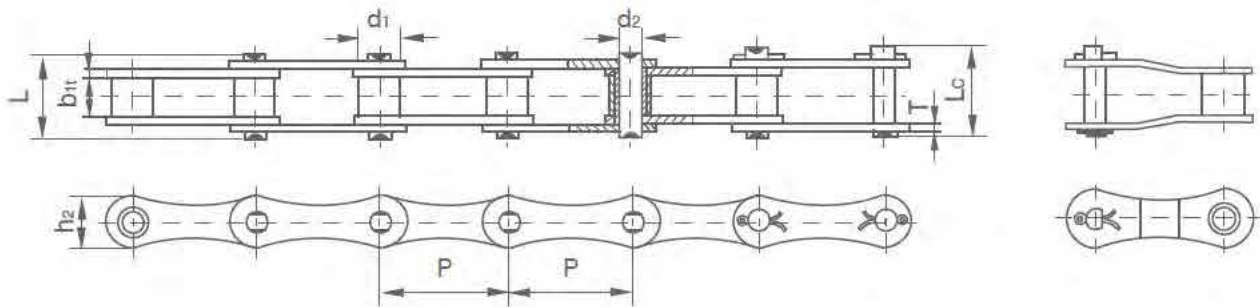
S2050		P=37.75 B=8.70 ROLLER=∅10.16				
Z		OD	D	PD	dm	A
15	7 1/2	84	12	78.06	57	40
17	8 1/2	94	12	87.89	60	40
18	9	100	14	92.83	70	40
19	9 1/2	105	14	97.78	70	40
20	10	110	14	102.72	75	45
21	10 1/2	115	16	107.22	75	45
22	11	120	16	112.70	80	45
23	11 1/2	125	16	117.68	80	45
24	12	130	16	122.67	80	45
25	12 1/2	135	16	127.67	80	45
26	13	140	20	132.67	85	45
27	13 1/2	145	20	137.67	85	45
28	14	150	20	142.68	90	45
29	14 1/2	155	20	147.69	90	45

S2080		P=50.80 B=15.80 ROLLER=∅15.875				
Z		OD	D	PD	dm	A
15	7 1/2	135	16	124.90	90	50
17	8 1/2	151	20	140.62	100	50
18	9	159	20	148.53	100	50
19	9 1/2	167	20	156.45	100	50
20	10	176	20	164.39	100	60
21	10 1/2	184	20	172.35	100	60
22	11	192	20	180.31	100	60
23	11 1/2	200	20	188.24	110	60
24	12	208	20	196.28	110	60
25	12 1/2	216	20	204.27	110	60
26	13	224	20	212.27	120	60
27	13 1/2	233	20	220.28	120	60
28	14	241	20	228.30	120	60
29	14 1/2	249	20	236.31	120	60

Sprockets - Chain

ISO 1275-1995

Double pitch transmission chains



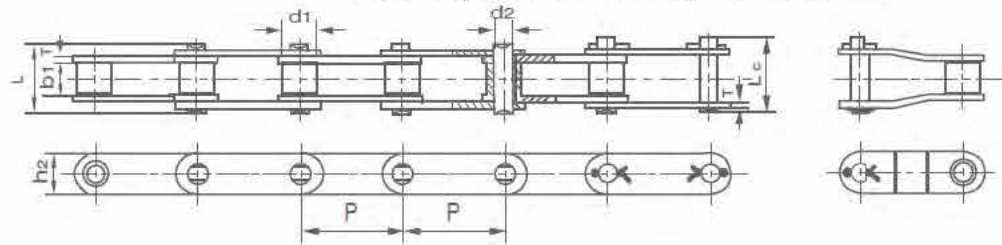
DIN ISO Chain No.	ANSI Chain No.	Pitch	Roller diameter	Width between inner plates	Pin diameter	Pin length		Inner plate depth	Plate thickness	Ultimate tensile strength	Average tensile strength	Weight per meter
		P	d1 max	b1 min	d2 max	L max	Lc max	h2 max	t/T max	Q min	Q0	q
		mm	mm	mm	mm	mm	mm	mm	mm	kN	kN	kg/m
208A	2040	25.40	7.95	7.85	3.96	16.6	17.8	12.07	1.50	14.1	16.7	0.42
208B		25.40	8.51	7.75	4.45	16.7	18.2	11.81	1.60	18.0	19.4	0.45
210A	2050	31.75	10.16	9.40	5.08	20.7	22.2	15.09	2.03	22.2	28.1	0.73
210B		31.75	10.16	9.65	5.08	19.5	20.9	14.7	1.70	22.4	27.5	0.65
212A	2060	38.10	11.91	12.57	5.94	25.9	27.7	18.08	2.42	31.8	36.8	1.02
212B		38.10	12.07	11.68	5.72	22.5	25.2	16.0	1.85	29.0	32.2	0.76
216A	2080	50.80	15.88	15.75	7.92	32.7	36.5	24.13	3.25	56.7	65.7	1.70
216AH		50.80	15.88	15.75	7.92	36.2	39.4	24.0	4.00	56.7	70.0	2.17
216B		50.80	15.88	17.02	8.28	36.1	39.1	21.0	4.15/3.1	60.0	72.8	1.75
220A	2100	63.50	19.05	18.90	9.53	40.4	44.7	30.48	4.00	88.5	102.6	2.55
220B		63.50	19.05	19.54	10.19	41.3	45.0	26.4	4.5/3.5	95.0	106.7	2.62
224A	2120	76.20	22.23	25.22	11.10	50.3	54.3	36.55	4.80	127.0	147.3	4.06
224B		76.20	25.40	25.40	14.63	53.4	57.8	33.2	6.0/4.8	160.0	178.0	4.70
228B		88.90	27.94	30.99	15.90	65.1	69.5	36.7	7.5/6.0	200.0	222.0	6.23
232B		101.60	29.21	30.99	17.81	66.0	71.0	42.0	7.0/6.0	250.0	277.5	6.72

Sprockets - Chain

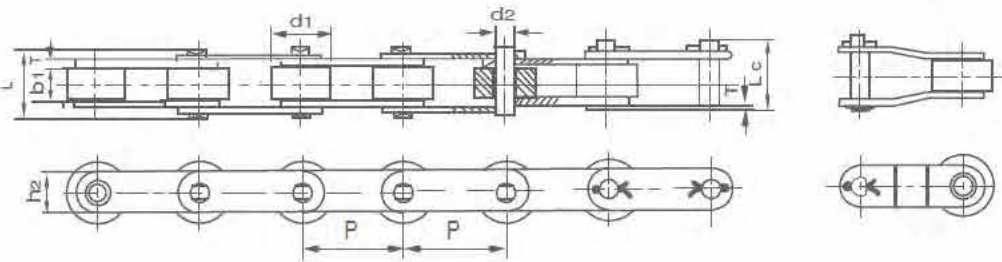
ISO 1275-1995

Double pitch conveyor chains

Small roller type



Large roller type

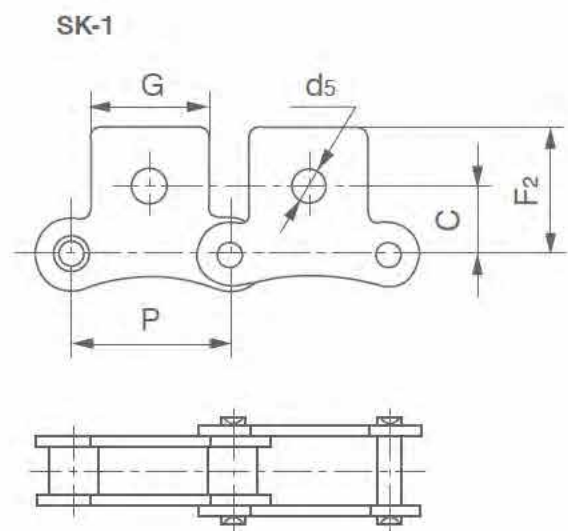
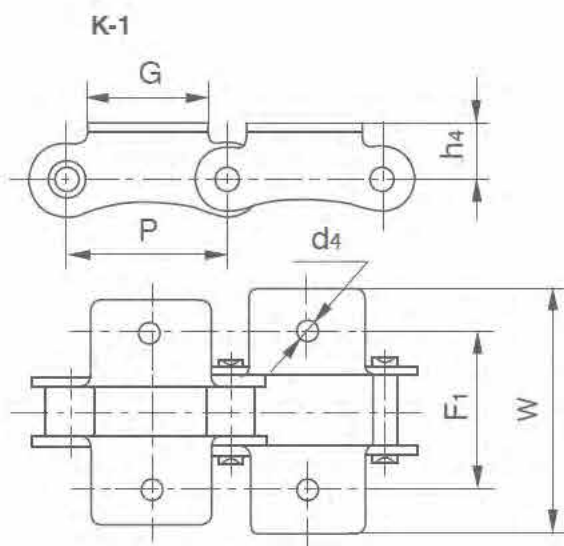


DIN ISO Chain No.	ANSI Chain No.	Pitch	Roller diameter	Width between inner plates	Pin diameter	Pin length		Inner plate depth	Plate thickness	Ultimate tensile strength	Average tensile strength	Weight per meter
		P	d1 max	b1 min	d2 max	L max	Lc max	h2 max	T max	Q min	Q0	q
		mm	mm	mm	mm	mm	mm	mm	mm	kN	kN	kg/m
C208A C208AL	C2040 C2042	25.40	7.95 15.88	7.85	3.4	16.6	17.8	12.0	1.50	14.1	16.7	0.50 0.84
C208AH	C2040H	25.40	7.95	7.85	3.96	18.8	19.9	12.0	2.03	14.1	17.2	0.65
C208B C208BL		25.40	8.51 15.88	7.75	4.45	16.7	18.2	11.8	1.60	18.0	19.4	0.55 0.89
C210A C210AL	C2050 C2052	31.75	10.16 19.05	9.40	5.5	20.7	22.2	15.0	2.03	22.2	28.1	0.78 1.27
C212A C212AL	C2060 C2062	38.10	11.91 22.23	12.57	5.5	25.9	27.7	18.0	2.42	31.8	36.8	1.12 1.61
C212AH C212AHL	C2060H C2062H	38.10	11.91 22.23	12.57	5.94	29.2	31.6	18.0	3.25	31.8	41.6	1.44 2.07
C216A C216AL	C2080 C2082	50.80	15.88 28.58	15.75	7.92	32.7	36.5	24.0	3.25	56.7	65.7	2.08 3.12
C216AH C216AHL	C2080H C2082H	50.80	15.88 15.88	15.75	6.6	36.5	39.4	24.4	4.00	56.7	70.0	2.54 3.58
C220A C220AL	C2100 C2102	63.50	19.05 39.67	18.90	9.2	40.4	44.7	30.0	4.00	88.5	102.6	3.01 4.83
C220AH C220AHL	C2100H C2102H	63.50	19.05 39.67	18.90	9.53	43.6	46.9	30.0	4.80	88.5	112.4	3.56 5.38
C224A C224AL	C2120 C2122	76.20	22.23 44.45	25.22	11.10	50.3	54.3	35.7	4.80	127.0	147.3	4.66 7.66
C224AH C224AHL	C2120H C2122H	76.20	22.23 44.45	25.22	11.10	53.5	57.5	35.7	5.60	127.0	160.9	5.26 8.26
C232A C232AL	C2160 C2162	101.60	28.58 57.15	31.75	14.27	64.8	69.6	47.8	6.40	226.8	278.9	8.23 11.95
C232AH C232AHL	C2160H C2162H	101.60	28.58 57.15	31.75	14.27	68.2	73.0	47.8	7.20	226.8	285.8	9.06 12.77

Sprockets - Chain

ISO 1275-1995

Double pitch transmission chain attachments

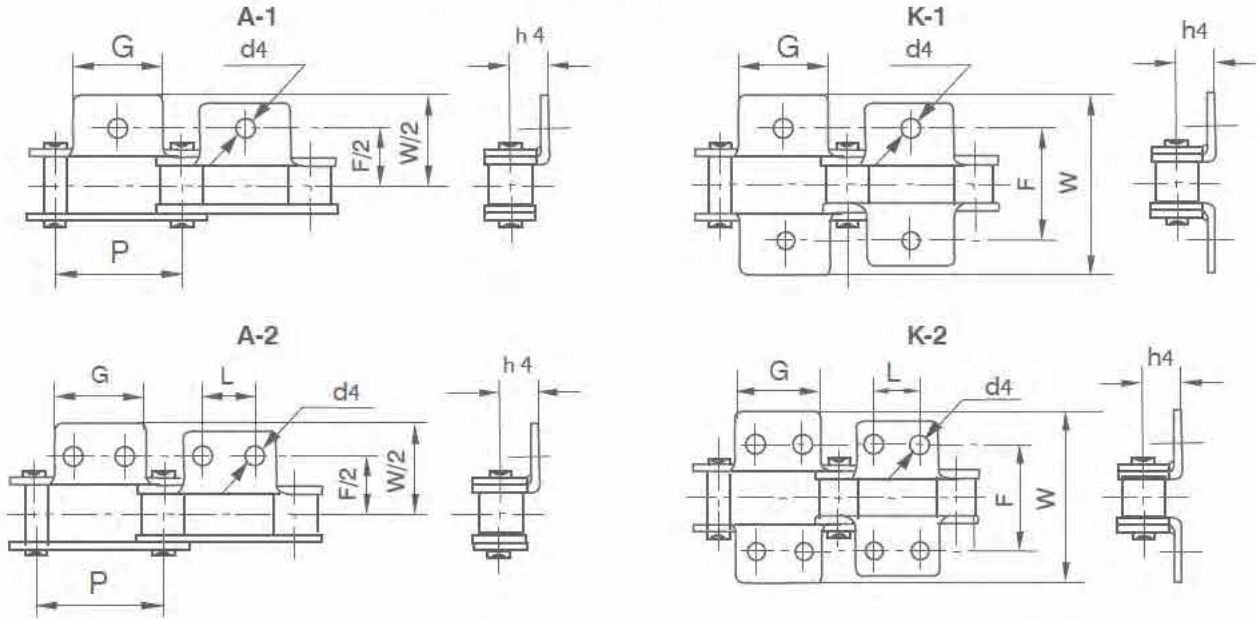


DIN ISO Chain No.	ANSI Chain No.	P	G	F ₁	W	h ₄	d ₄	C	F ₂	d ₅
		mm	mm	mm	mm	mm	mm	mm	mm	mm
208A	2040	25.40	19.1	25.4	39.6	9.1	3.4	11.1	20.5	5.5
210A	2050	31.75	23.8	31.8	49.0	11.1	5.5	14.3	25.0	6.6
212A	2060	38.10	28.6	42.9	67.8	14.7	5.5	17.5	32.9	9.2
216A	2080	50.80	38.1	55.6	87.8	19.1	6.8	22.2	43.5	11.0
220A	2100	63.50	47.6	66.6	107.5	23.4	9.2	28.6	50.4	13.0
224A	2120	76.20	57.2	79.3	127.5	27.8	11.0			

Sprockets - Chain

ISO 1275-1995

Double pitch conveyor chains attachments

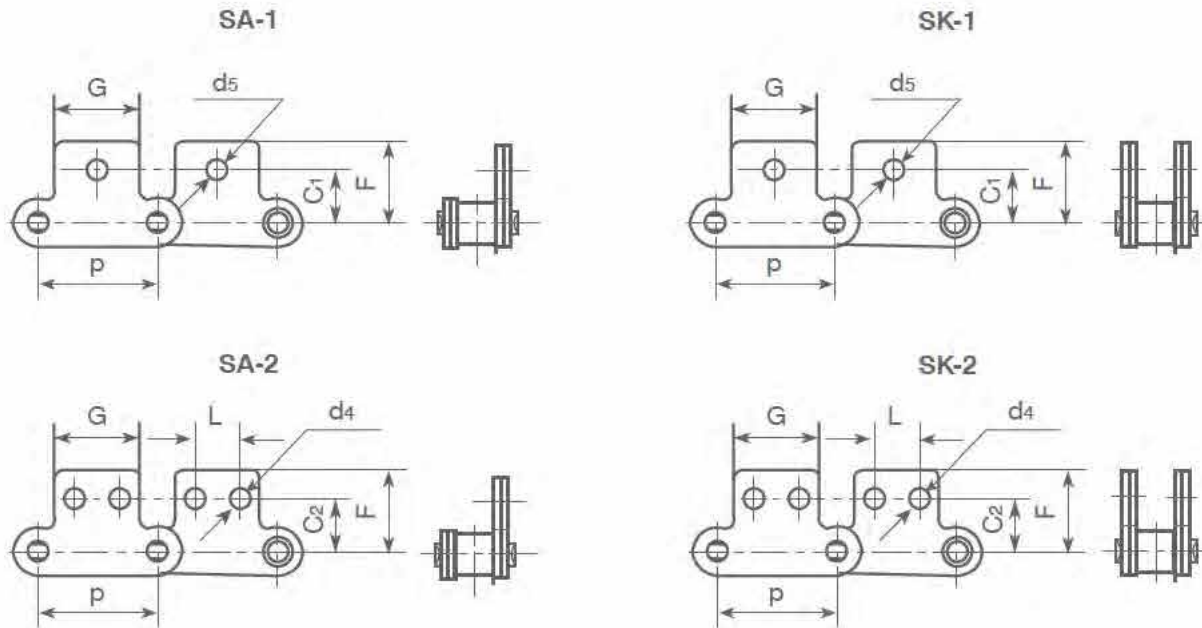


DIN ISO Chain No.	ANSI ChainNo.	P	G	L	F	W	hc	d4
		mm	mm	mm	mm	mm	mm	mm
C208A C208AL	C2040 C2042	25.4	19.1	9.5	15.4	39.6	9.1	3.4
C208B C208BL		25.4	23.2	12.7	25.4	39.6	9.1	4.5
C210A C210AL	C2050 C2052	31.75	23.8	11.9	31.8	49.0	11.1	5.5
C212A C212AL	C2060 C2062	38.1	28.6	14.3	42.9	67.8	14.7	5.5
C212AH C212AHL	C2060H C2062H	38.1	28.6	14.3	42.9	67.8	14.7	5.5
C216A C216AL	C2080 C2082	50.8	38.1	19.1	55.6	87.8	19.1	6.8
C216AH C216AHL	C2080H C2082H	50.8	38.1	19.1	55.6	87.8	19.1	6.8
C220A C220AL	C2100 C2102	63.5	47.6	23.8	66.6	107.5	23.4	9.2
C220AH C220AHL	C2100H C2102H	63.5	47.6	23.8	66.6	107.5	23.4	9.2
C224A C224AL	C2120 C2122	76.2	57.2	28.6	79.3	121.4	27.8	11.0
C224AH C224AHL	C2120H C2122H	76.2	57.2	28.6	79.3	121.4	27.8	11.0
C232A C232AL	C2160 C2162	101.6	76.2	38.1	104.7	151.6	36.5	13.1
C232AH C232AHL	C2160H C2162H	101.6	76.2	38.1	104.7	151.6	36.5	13.1

Sprockets - Chain

ISO 1275-1995

Double pitch conveyor chains attachments



CHAINS

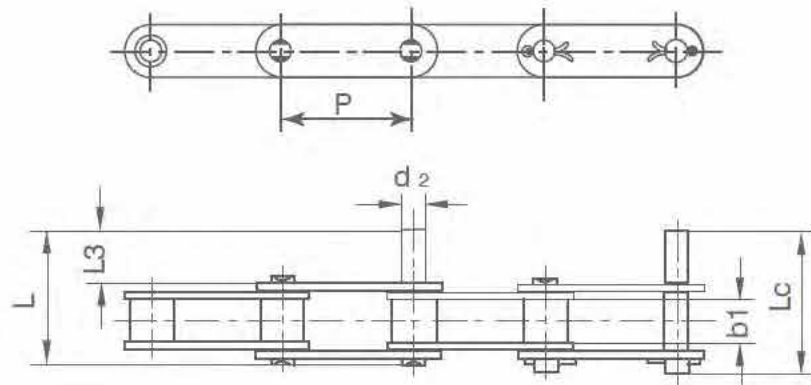
DIN ISO Chain No.	ANSI Chain No.	P	G	L	C ₁	C ₂	F	d ₄	d ₅
		mm	mm	mm	mm	mm	mm	mm	mm
C208A C208AL	C2040 C2042	25.40	19.1	9.5	11.1	13.5	20.05	3.4	5.5
C208B C208BL		25.40	23.2	12.7	11.1	13.5	20.5	4.5	5.5
C210A C210AL	C2050 C2052	31.75	23.8	11.9	14.3	15.9	25.0	5.5	6.6
C212A C212AL	C2060 C2062	38.10	28.6	14.3	17.5	19.1	32.9	5.5	9.2
C212AH C212AHL	C2060H C2062H	38.10	28.6	14.3	17.5	19.1	32.9	5.5	9.2
C216A C216AL	C2080 C2082	50.80	38.1	19.1	22.2	25.4	43.5	6.6	11.0
C216AH C216AHL	C2080H C2082H	50.80	38.1	19.1	22.2	25.4	43.5	6.6	11.0
C220A C220AL	C2100 C2102	63.50	47.6	23.8	28.6	31.8	50.4	8.4	13.0
C220AH C220AHL	C2100H C2102H	63.50	47.6	23.8	28.6	31.8	50.4	8.4	13.0

Sprockets - Chain

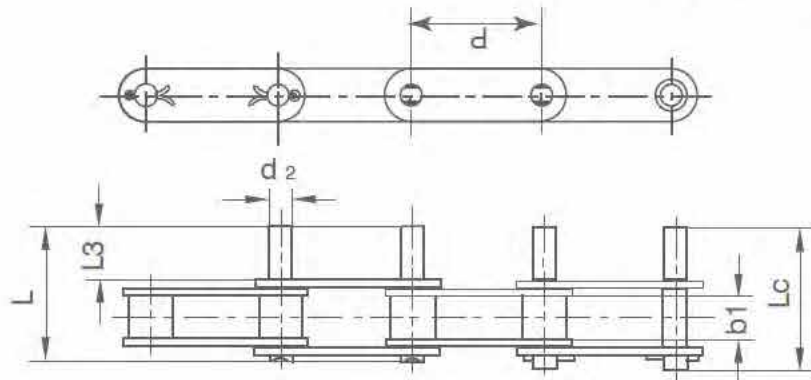
ISO 1275-1995

Double pitch conveyor chains attachments

D-1



D-3

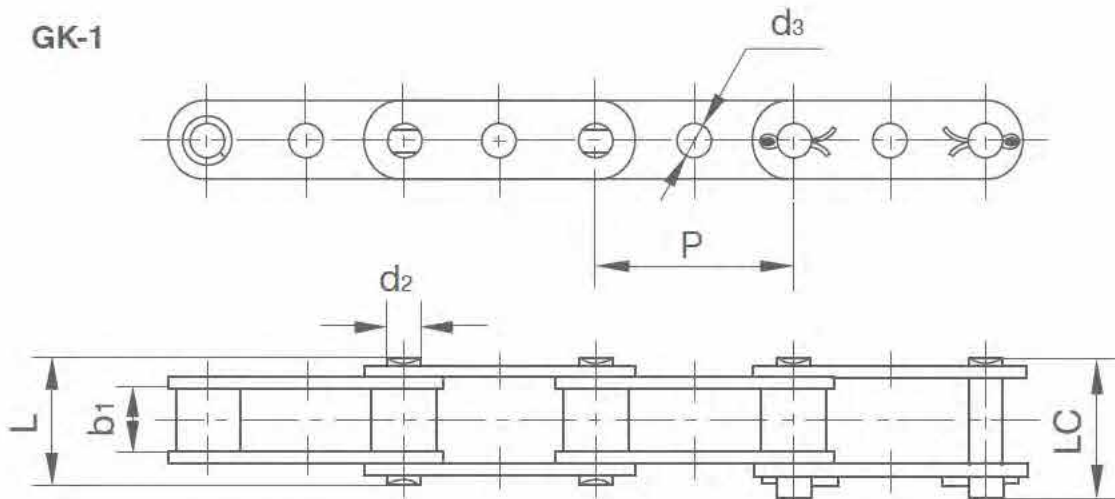
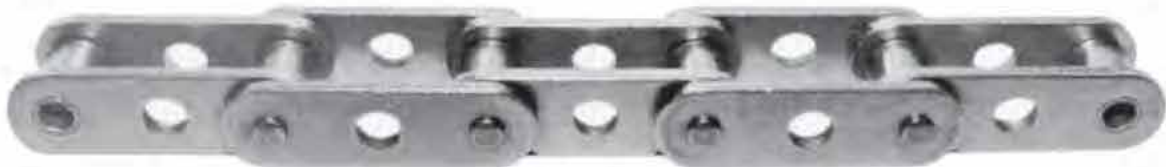


DIN ISO Chain No.	ANSI Chain No.	P	b2	d2	L3	L	Lc
		mm	mm	mm	mm	mm	mm
C208A C208AL	C2040 C2042	25.40	7.85	3.96	9.5	25.1	26.2
C210A C210AL	C2050 C2052	31.75	9.40	5.08	11.9	31.3	33.1
C212A C212AL	C2060 C2062	38.10	12.57	5.94	14.3	38.6	40.6
C212AH C212AHL	C2060H C2062H	38.10	12.57	5.94	14.3	42.0	43.8
C216A C216AL	C2080 C2082	50.80	15.75	7.92	19.1	50.3	53.3
C216AH C216AHL	C2080H C2082H	50.80	15.75	7.92	19.1	53.5	55.0
C220A C220AL	C2100 C2102	63.50	18.90	9.53	23.8	61.8	66.1
C220AH C220AHL	C2100H C2102H	63.50	18.90	9.53	23.8	65.0	68.3
C224A C224AL	C2120H C2122H	76.20	25.22	11.10	28.6	79.6	83.6
C232AH C232AHL	C2160H C2162H	101.60	31.75	14.27	38.1	103.0	107.8

Sprockets - Chain

ISO 1275-1995

Double pitch conveyor chains attachments

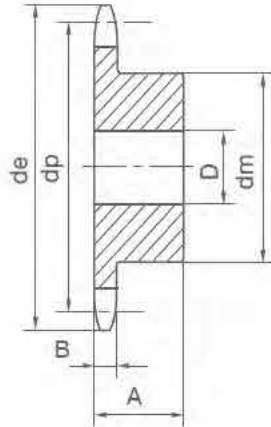
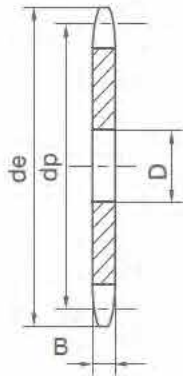


CHAINS

DIN ISO Chain No.	ANSI Chain No.	P	b ₂	d ₂	d ₃	L	L _c
		mm	mm	mm	mm	mm	mm
C208A C208AL	C2040 C2042	25.40	7.85	3.96	4.1	16.6	18.8
C210A C210AL	C2050 C2052	31.75	9.40	5.08	5.1	20.7	23.3
C212A C212AL	C2060 C2062	38.10	12.57	5.94	6.1	25.9	28.3
C212AH C212AHL	C2060H C2062H	38.10	12.57	5.94	6.1	29.2	31.6
C216A C216AL	C2080 C2082	50.80	15.75	7.92	8.1	32.7	36.5
C216AH C216AHL	C2080H C2082H	50.80	15.75	7.92	8.1	36.2	39.4
C220A C220AL	C2100 C2102	63.50	18.90	9.53	10.1	40.4	44.7
C220AH C220AHL	C2100H C2102H	63.50	18.90	9.53	10.1	43.6	46.9

Sprockets

PLATE WHEELS FOR CHAIN CONVEYORS AND CHAIN ELEVATORS

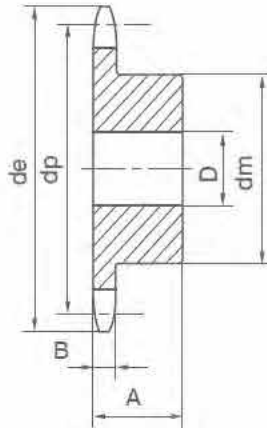
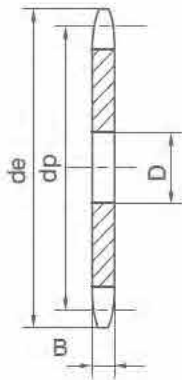


P50

z	P.50-R25						*P.50-R28						P.50-31					
	de	dp	dm	D	B	A	de	dp	dm	D	B	A	de	dp	dm	D	B	A
6	121.0	100.00	58	20	10.5	40.5	115.0	100.00	58	20	13.5	43.5	120.0	100.00	58	20	13.5	43.5
7	136.0	115.24	58	20	10.5	40.5	132.0	115.24	58	20	13.5	43.5	135.0	115.24	58	20	13.5	43.5
8	151.0	130.65	58	20	10.5	40.5	149.0	130.65	58	20	13.5	43.5	150.0	130.65	58	20	13.5	43.5
9	167.0	146.20	58	20	10.5	40.5	165.0	146.20	58	20	13.5	43.5	166.0	146.20	58	20	13.5	43.5
10	183.0	161.80	88	25	10.5	45.5	180.0	161.80	88	25	13.5	48.5	182.0	161.80	88	25	13.5	48.5
11	198.5	177.50	88	25	10.5	45.5	197.0	177.50	88	25	13.5	48.5	197.5	177.50	88	25	13.5	48.5
12	214.0	193.20	88	25	10.5	45.5	212.0	193.20	88	25	13.5	48.5	213.0	193.20	88	25	13.5	48.5
13	230.0	208.95	88	25	10.5	45.5	228.0	208.95	88	25	13.5	48.5	229.0	208.95	88	25	13.5	48.5
14	245.5	224.70	88	25	10.5	45.5	244.0	224.70	88	25	13.5	48.5	244.5	224.70	88	25	13.5	48.5
15	261.5	240.45	88	25	10.5	45.5	260.0	240.45	88	25	13.5	48.5	260.5	240.45	88	25	13.5	48.5
16	277.5	256.30	118	30	10.5	60.5	276.0	256.30	118	30	13.5	63.5	276.5	256.30	118	30	13.5	63.5
17	293.0	272.11	118	30	10.5	60.5	292.0	272.11	118	30	13.5	63.5	292.0	272.11	118	30	13.5	63.5
18	309.0	287.95	118	30	10.5	60.5	307.0	287.95	118	30	13.5	63.5	308.0	287.95	118	30	13.5	63.5
19	325.0	303.80	118	30	10.5	60.5	322.0	303.80	118	30	13.5	63.5	324.0	303.80	118	30	13.5	63.5
20	340.5	319.60	118	30	10.5	60.5	339.0	319.60	118	30	13.5	63.5	339.5	319.60	118	30	13.5	63.5
21	356.5	335.45	118	30	10.5	60.5	355.0	335.45	118	30	13.5	63.5	355.5	335.45	118	30	13.5	63.5
22	372.5	351.35	118	30	10.5	60.5	371.0	351.35	118	30	13.5	63.5	371.5	351.35	118	30	13.5	63.5
23	388.0	367.20	118	30	10.5	60.5	387.0	367.20	118	30	13.5	63.5	387.0	367.20	118	30	13.5	63.5
24	404.0	383.05	118	30	10.5	60.5	403.0	383.05	118	30	13.5	63.5	403.0	383.05	118	30	13.5	63.5
25	420.0	398.95	118	30	10.5	60.5	418.0	398.95	118	30	13.5	63.5	419.0	398.95	118	30	13.5	63.5
26	434.0*	414.80		30	10.5		434.0	414.80	133	30	13.5	65	435.0	414.80	133	30	13.5	65
27	450.0*	430.70	133	30	10.5	62	450.0	430.70	133	30	13.5	65	450.0*	430.70	133	30	13.5	65
28	467.5	446.55	133	30	10.5	62	466.0	446.55	133	30	13.5	65	466.5	446.55	133	30	13.5	65
29	482.0*	462.45	133	30	10.5	62	482.0	462.45	133	30	13.5	65	482.0*	462.45	133	30	13.5	65
30	499.5	478.35	133	30	10.5	62	498.0	478.35	133	30	13.5	65	498.5	478.35	133	30	13.5	65
31	514.0*	494.25	133	30	10.5	62	514.0	494.25	133	30	13.5	65	514.0*	494.25	133	30	13.5	65
32	530.0*	510.10	133	30	10.5	62	530.0	510.10	133	30	13.5	65	530.0	510.10	133	30	13.5	65
35	579.0	557.80	133	30	10.5	62	577.0	557.80	133	30	13.5	65	579.0	557.80	133	30	13.5	65
36	593.0*	573.70	133	30	10.5	62	593.0	573.70	133	30	13.5	65	593.0*	573.70	133	30	13.5	65
38	626.5	605.45	133	30	10.5	62	625.0	605.45	133	30	13.5	65	625.5	605.45	133	30	13.5	65

Sprockets

PLATE WHEELS FOR CHAIN CONVEYORS AND CHAIN ELEVATORS

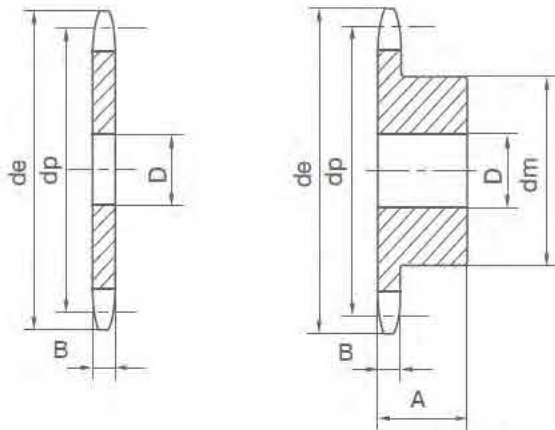


P75

z	P75-R.25						P75-R.31					
	d_e	d_p	d_m	D	B	A	d_e	d_p	d_m	D	B	A
6*	165.0	150.00	88	25	10.5	45.5	168.0	150.00	88	25	13.5	48.5
7*	188.0	172.86	88	25	10.5	45.5	192.0*	172.86	88	25	13.5	48.5
8	211.0	195.98	88	25	10.5	45.5	215.0	195.98	88	25	13.5	48.5
9*	234.0	219.30	88	25	10.5	45.5	238.0	219.30	88	25	13.5	48.5
10	258.0	242.70	118	25	10.5	60.5	261.0	242.70	118	30	13.5	63.5
11*	282.0	266.25	118	30	10.5	60.5	286.0	266.25	118	30	13.5	63.5
12*	305.0	289.80	118	30	10.5	60.5	309.0	289.80	118	30	13.5	63.5
13*	329.0	313.42	118	30	10.5	60.5	333.0	313.42	118	30	13.5	63.5
14*	353.0	337.05	118	30	10.5	60.5	357.0	337.05	118	30	13.5	63.5
15*	376.0	360.72	118	30	10.5	60.5	380.0	360.72	118	30	13.5	63.5
16*	400.0	384.45	133	30	10.5	62	404.0	384.45	133	30	13.5	65
17*	424.0	408.16	133	30	10.5	62	428.0*	408.16	133	30	13.5	65
18*	447.0	431.92	133	30	10.5	62	451.0*	431.92	133	30	13.5	65
19*	471.0	455.70	133	30	10.5	62	475.0*	455.70	133	30	13.5	65
20*	495.0	479.40	133	30	10.5	62	499.0	479.40	133	30	13.5	65
21*	519.0	503.17	133	30	10.5	62	523.0	503.17	133	30	13.5	65
22*	543.0	527.02	133	30	10.5	62	547.0*	527.02	133	30	13.5	65
23*	566.0	550.80	133	30	10.5	62	570.0*	550.80	133	30	13.5	65
24*	590.0	574.57	133	30	10.5	62	594.0*	574.57	133	30	13.5	65
25*	614.0	598.42	133	30	10.5	62	618.0*	598.42	133	30	13.5	65
26*	638.0	622.20	133	30	10.5	62						
27*	662.0	646.05	133	30	10.5	62						
28*	685.0	669.82	133	30	10.5	62						
29*	709.0	693.68	133	30	10.5	62						
30*	733.0	717.52	133	30	10.5	62						

Sprockets

PLATE WHEELS FOR CHAIN CONVEYORS AND CHAIN ELEVATORS



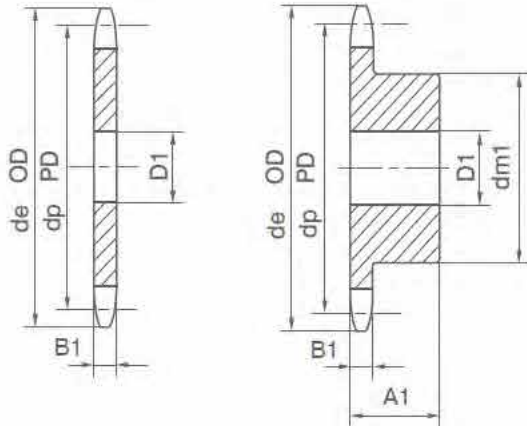
P100

z	P.100-R.31						P.100-R.40					
	de	dp	dm	D	B	A	de	dp	dm	D	B	A
6	218.0	200.00	88	25	13.5	48.5	220.0	200.00	118	25	20	70
7	249.0	230.48	88	25	13.5	48.5	251.0	230.48	118	25	20	70
8	280.0	261.31	118	30	13.5	63.5	283.0	261.31	118	30	20	70
9	311.0	292.40	118	30	13.5	63.5	314.0	292.40	118	30	20	70
10	342.0	323.61	118	30	13.5	63.5	345.0	323.61	118	30	20	70
11	375.0	354.95	118	30	13.5	63.5	378.0	354.95	118	30	20	70
12	406.0	386.40	118	30	13.5	63.5	409.0	386.40	118	30	20	70
13	437.0	417.90	118	30	13.5	63.5	441.0	417.90	118	30	20	70
14	469.0	449.90	118	30	13.5	63.5	473.0*	449.90	133	30	20	71.5
15	500.0	480.97	118	30	13.5	63.5	504.0*	480.97	133	30	20	71.5
16	532.0	512.60	133	30	13.5	65	536.0*	512.60	133	30	20	71.5
17*	564.0	544.22	133	30	13.5	65	568.0*	544.22	133	30	20	71.5
18*	595.0	575.90	133	30	13.5	65	599.0*	575.90	133	30	20	71.5
19*	627.0	607.55	133	30	13.5	65	631.0*	607.55	133	30	20	71.5
20*	659.0	639.20	133	30	13.5	65	663.0*	639.20	133	30	20	71.5
21*	690.0	670.95	133	30	13.5	65						
22*	722.0	702.70	133	30	13.5	65						
23*	754.0	734.40	133	30	13.5	65						
24*	786.0	766.10	133	30	13.5	65						
25*	817.0	797.90	133	30	13.5	65						

C45 used for the solid products by forging
SS41 used for the welding products.

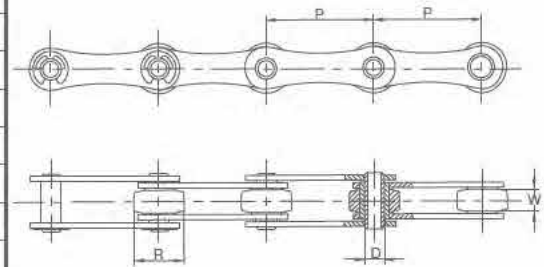
Sprockets

FK 1650 Hollow pin chain



z	de	dp	dm	D	B	A	Kg
7	131	117.08	80	30	9	40	1.6
8	147	132.75	80	30	9	40	1.9
9	162	148.52	80	30	9	40	2.1
10	178	164.39	80	30	9	40	2.3
11	194	180.31	80	30	9	40	2.5
12	210	196.29	110	30	9	50	4.6
13	227	212.27	110	30	9	50	5.3
14	242	228.29	110	30	9	50	5.7
15	258	244.33	120	40	9	50	6.1
16	274	260.40	120	40	9	50	6.5
17	290	276.46	120	40	9	50	6.9
18	300	292.55	120	40	9	50	7.7
28	148	453.72	130	40	9	70	298

P50.8



P Pitch=50.8mm
W Width=10.5mm
R Roller=φ30mm



Special Note

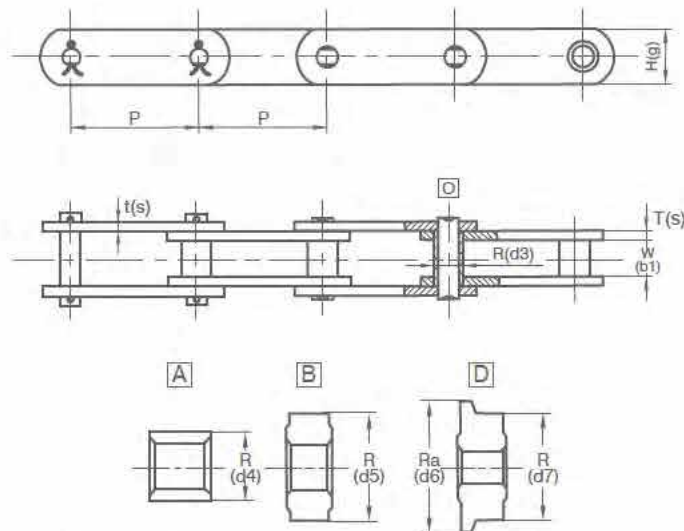
Conveyor chain wheels with large pitch have a fine finish surface. Teeth are milled and peeled by CNC center. They are made with fine precision and a smooth finish. Teeth can be tempered and hardness can reach HRC50, These kinds of chain wheels can be machined as finished bore or taper bore according to the requests of clients. The surface can be treated with oxidizing, phosphating, painting or Zinc-plating.

Sprockets - Chain

M20

Conveyor chains (metric series)

ISO 1997/I-1976



M 20

(mm)

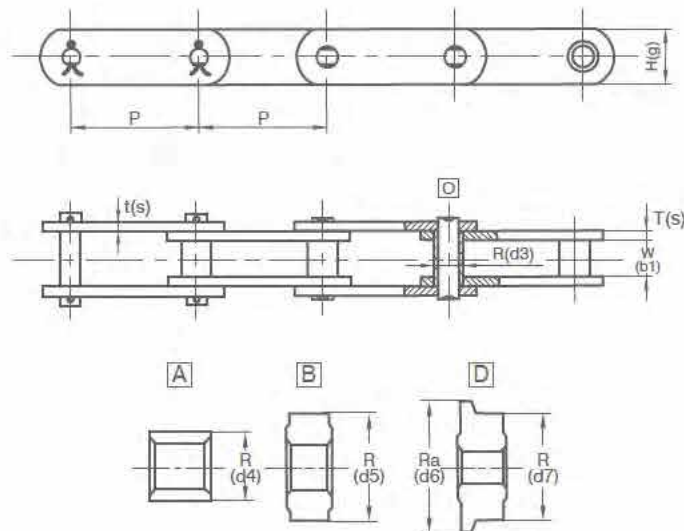
P	W	Z	dp	de mm				dm	A	B	d	Kg
				Q min Rφ9	A min Rφ12.5	B min Rφ25	D min Rφ25/φ30					
40	16	6	80.00	88	88	91	91	45	40	14.4	25	1.4
		8	104.52	112	112	115	115	75	40	14.4	25	1.7
		10	129.44	136	136	139	139	75	40	14.4	25	2.2
		12	154.55	162	162	165	165	80	45	14.4	25	3.1
50	16	6	100.00	108	108	111	111	65	45	14.4	25	1.8
		8	130.66	138	138	141	141	75	45	14.4	25	2.4
		10	161.81	169	169	172	172	75	45	14.4	25	3.2
		12	193.19	200	200	203	203	80	50	14.4	25	4.4
63	16	6	126.00	133	133	141	141	85	50	14.4	30	2.6
		8	164.62	172	172	175	175	85	50	14.4	30	3.2
		10	203.27	211	211	214	214	85	50	14.4	30	4.9
		12	243.43	251	251	254	254	90	60	14.4	30	7
80	16	6	160.00	166	166	169	169	85	50	14.4	30	3.4
		8	209.05	216	216	219	219	85	50	14.4	30	5.1
		10	258.89	266	266	269	269	85	50	14.4	30	7.1
		12	309.10	316	316	319	319	90	60	14.4	30	10.4
100	16	6	200.00	206	206	209	209	100	60	14.4	30	6.1
		8	261.31	268	268	271	271	100	60	14.4	30	8.3
		10	323.61	331	331	334	334	100	60	14.4	40	11.3
		12	386.37	394	394	397	397	110	65	14.4	40	16

Sprockets - Chain

M20

Conveyor chains (metric series)

ISO 1997/I-1976



M 20

(mm)

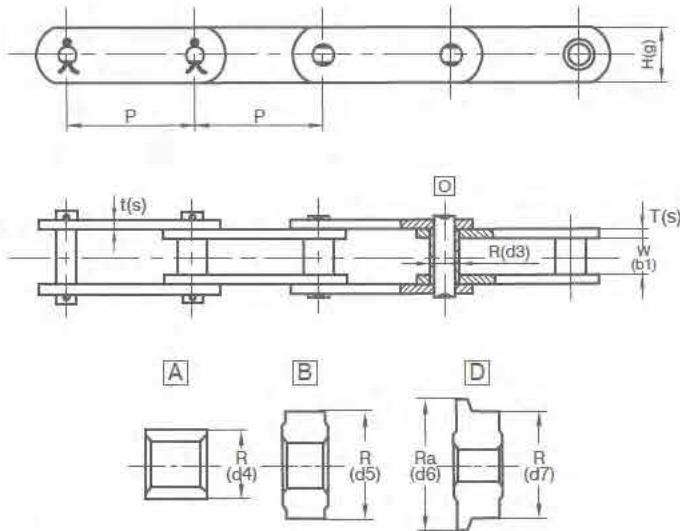
P	W	Z	dp	de mm				dm	A	B	d	Kg
				Q min Rφ9	A min Rφ12.5	B min Rφ25	D min Rφ25/φ30					
40	16	6	80.00	88	88	91	91	45	40	14.4	25	1.4
		8	104.52	112	112	115	115	75	40	14.4	25	1.7
		10	129.44	136	136	139	139	75	40	14.4	25	2.2
		12	154.55	162	162	165	165	80	45	14.4	25	3.1
50	16	6	100.00	108	108	111	111	65	45	14.4	25	1.8
		8	130.66	138	138	141	141	75	45	14.4	25	2.4
		10	161.81	169	169	172	172	75	45	14.4	25	3.2
		12	193.19	200	200	203	203	80	50	14.4	25	4.4
63	16	6	126.00	133	133	141	141	85	50	14.4	30	2.6
		8	164.62	172	172	175	175	85	50	14.4	30	3.2
		10	203.24	211	211	214	214	85	50	14.4	30	4.9
		12	243.43	251	251	254	254	90	60	14.4	30	7
80	16	6	160.00	166	166	169	169	85	50	14.4	30	3.4
		8	209.05	216	216	219	219	85	50	14.4	30	5.1
		10	258.89	266	266	269	269	85	50	14.4	30	7.1
		12	309.10	316	316	319	319	90	60	14.4	30	10.4
100	16	6	200.00	206	206	209	209	100	60	14.4	30	6.1
		8	261.31	268	268	271	271	100	60	14.4	30	8.3
		10	323.61	331	331	334	334	100	60	14.4	40	11.3
		12	386.37	394	394	397	397	110	65	14.4	40	16

Sprockets - Chain

M40

Conveyor chains (metric series)

ISO 1997/I-1976



M 40

(mm)

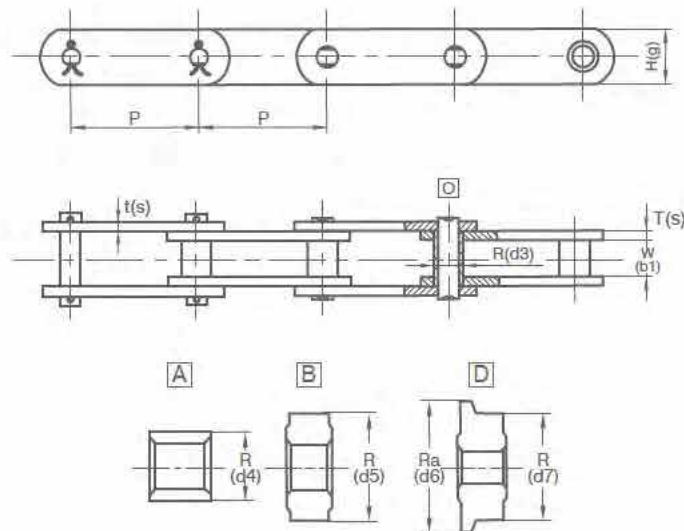
P	W	Z	dp	de mm				dm	A	B	d	Kg
				Q min Rφ12.5	A min Rφ18	B min Rφ36	D min Rφ36/42					
63	20	6	126.00	136	136	140	140	85	50	18	30	3.0
		8	164.62	175	175	179	179	85	50	18	30	4.1
		10	203.87	214	214	218	218	85	50	18	30	5.2
		12	243.43	254	254	258	258	90	60	18	30	8.2
80	20	6	160.00	169	169	173	173	85	50	18	30	4.5
		8	209.05	219	219	223	223	85	50	18	30	5.9
		10	258.89	269	269	273	273	85	60	18	30	8.8
		12	309.10	319	319	323	323	90	60	18	30	12.1
100	20	6	200.00	209	209	223	223	100	60	18	30	7.3
		8	261.31	271	271	275	275	100	60	18	30	9.6
		10	323.61	334	334	338	338	100	65	18	40	13.6
		12	386.37	397	397	401	401	110	70	18	40	19.3
125	20	6	250.00	260	260	264	264	115	65	18	40	10.8
		8	326.64	337	337	341	341	115	65	18	40	14.7
		10	404.51	415	415	419	419	115	75	18	40	21.5
		12	480.96	493	493	497	497	125	75	18	40	29.8
160	20	6	320.00	328	328	332	332	125	75	18	40	18.2
		8	418.00	428	428	432	432	125	75	18	40	23.5
		10	517.78	528	528	532	532	125	80	18	40	34
		12	618.19	628	628	632	632	135	85	18	40	47.7

Sprockets - Chain

M56

Conveyor chains (metric series)

ISO 1997/I-1976



M 56

(mm)

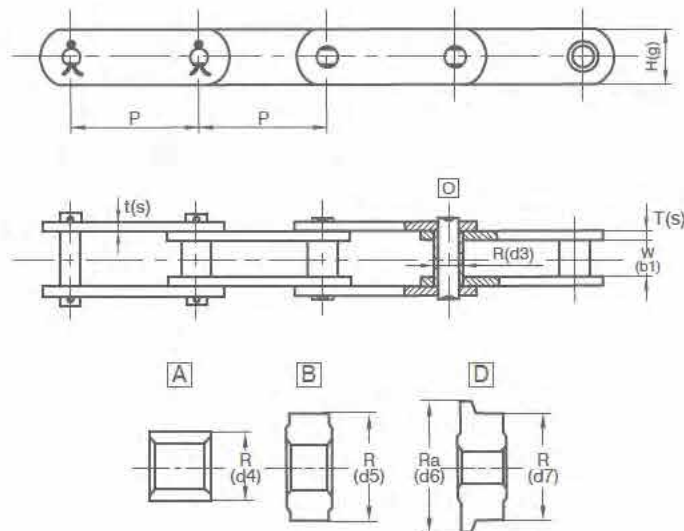
P	W	Z	dp	de mm				dm	A	B	d	Kg
				Q min Rφ15	A min Rφ21	B min Rφ42	D min Rφ42/50					
63	24	6	126.00	138	138	142	142	70	50	21.6	30	3.5
		8	164.62	177	177	181	181	85	50	21.6	30	4.6
		10	203.87	216	216	220	220	100	50	21.6	30	5.9
		12	243.43	256	256	260	260	110	65	21.6	30	10.3
80	24	6	160.00	171	171	175	175	85	50	21.6	30	5.2
		8	209.05	221	221	225	225	85	50	21.6	30	6.7
		10	258.89	271	271	275	275	100	50	21.6	30	10.2
		12	309.10	321	321	325	325	110	65	21.69	40	15.0
100	24	6	200.00	211	211	215	215	90	60	21.6	40	7.7
		8	261.31	273	273	277	277	90	60	21.6	40	10.3
		10	323.61	336	336	340	340	105	65	21.6	40	15.9
		12	386.37	399	399	403	403	115	70	21.6	40	22.0
125	24	6	250.00	262	262	266	266	115	65	21.6	40	11.6
		8	326.64	339	339	343	343	115	65	21.6	40	16.8
		10	404.51	417	417	421	421	125	80	21.6	40	26.0
		12	480.96	495	495	499	499	125	80	21.6	40	34.9
160	24	6	320.00	330	330	334	334	125	80	21.6	40	19.5
		8	418.10	430	430	434	434	125	80	21.6	40	27.4
		10	517.78	530	530	534	534	135	85	21.6	40	40.8
		12	618.19	630	630	634	634	145	90	21.6	40	57.20

Sprockets - Chain

M80

Conveyor chains (metric series)

ISO 1997/I-1976



M 80

(mm)

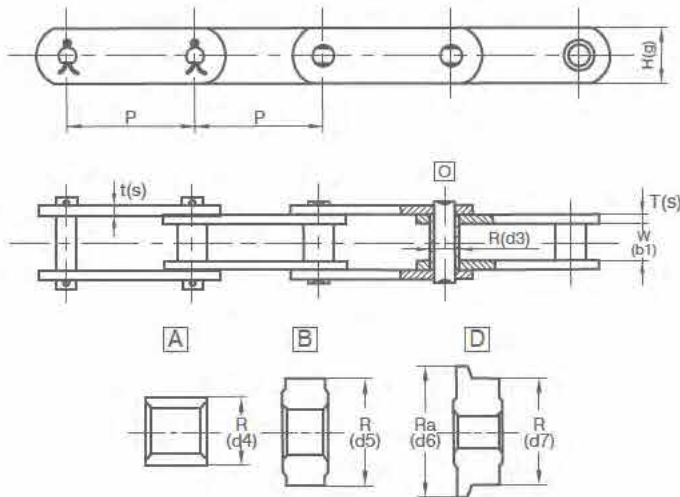
P	W	Z	dp	de mm				dm	A	B	d	Kg
				Q min Rφ18	A min Rφ25	B min Rφ50	D min Rφ50/80					
80	28	6	160.00	173	174	179	179		50	25.2	30	5.8
		8	209.05	223	234	229	229	85	50	25.2	30	7.5
		10	258.89	273	274	279	279	100	60	25.2	30	12.0
		12	309.10	323	324	329	329	115	65	25.2	40	17.1
100	28	6	200.00	213	214	219	219	100	60	25.2	40	8.6
		8	261.31	275	276	281	281	100	60	25.2	40	12.3
		10	323.61	338	339	344	344	110	65	25.2	40	18.2
		12	386.37	401	402	407	407	120	70	25.2	40	25.9
125	28	6	250.00	264	265	270	270	115	65	25.2	40	11.6
		8	326.64	341	342	347	347	115	65	25.2	40	18.8
		10	404.51	419	420	425	425	135	80	25.2	40	30.0
		12	480.96	497	498	503	503	135	80	25.2	40	40.5
160	28	6	320.00	332	333	338	338	130	80	25.2	40	26.5
		8	418.10	432	433	438	438	130	80	25.2	40	31.3
		10	517.78	532	533	538	538	140	85	25.2	40	46.7
		12	618.19	632	633	638	638	150	90	25.2	40	65.5
200	28	6	400.00	413	414	419	419	140	85	25.2	40	31.2
		8	522.62	537	538	543	543	140	85	25.2	40	47.5
		10	647.22	661	662	667	667	150	90	25.2	40	71.1
		12	772.74	787	788	793	793	160	100	25.2	50	100.1

Sprockets - Chain

M112

Conveyor chains (metric series)

ISO 1997/I-1976



M 112

(mm)

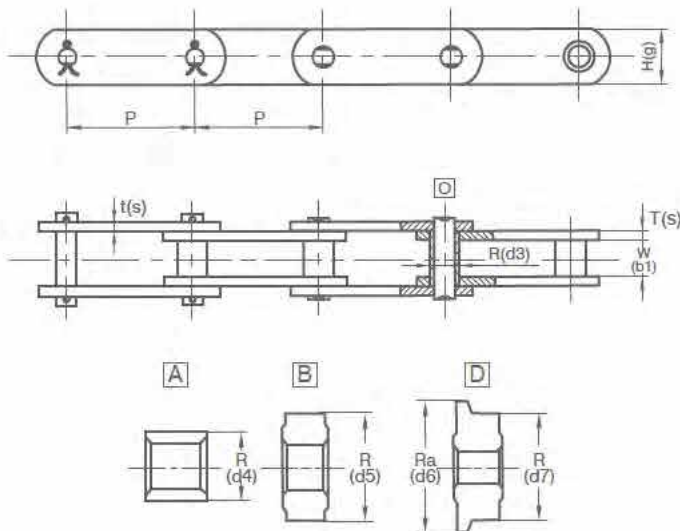
P	W	Z	dp	de mm				dm	A	B	d	Kg
				Q min Rφ21	A min Rφ30	B min Rφ60	D min Rφ60/70					
80	32	6	160.00	175	177	183	183	52	50	28.8	40	9.3
		8	209.05	225	227	233	233	85	50	28.8	40	13.1
		10	258.89	275	277	283	283	100	60	28.8	40	18.9
		12	309.10	325	327	333	333	115	65	28.8	40	23.3
100	32	6	200.00	215	217	223	223	100	60	28.8	40	16.5
		8	261.31	277	279	285	285	100	60	28.8	40	21.2
		10	323.61	340	342	348	348	115	75	28.8	40	39.5
		12	386.37	403	405	411	411	125	75	28.8	40	41.2
125	32	6	250.00	266	268	274	274	115	70	28.8	40	26.5
		8	326.64	343	345	351	351	115	70	28.8	40	32.3
		10	404.51	421	423	429	429	130	75	28.8	40	44.7
		12	480.96	499	501	507	507	130	80	28.8	40	54.6
160	32	6	320.00	334	336	342	342	135	75	28.8	40	38.5
		8	418.10	434	436	442	442	135	75	28.8	40	52.0
		10	517.78	534	536	542	542	145	80	28.8	40	73.2
		12	618.19	634	636	642	642	155	85	28.8	40	92.9
200	32	6	400.00	415	417	423	423	145	80	28.8	40	52.60
		8	522.62	539	541	547	547	145	80	28.8	40	78.8
		10	647.22	663	665	671	671	155	80	28.8	40	113.4
		12	772.74	789	791	797	797	170	95	28.8	40	132.2
250	32	6	500.00	513	515	521	521	155	95	28.8	40	85.6
		8	653.28	669	671	677	677	155	95	28.8	40	122.6
		10	809.03	825	827	833	833	160	100	28.8	40	175.2
		12	965.93	982	984	990	990	180	110	28.8	40	215.3

Sprockets - Chain

M160

Conveyor chains (metric series)

ISO 1997/I-1976



M 160

(mm)

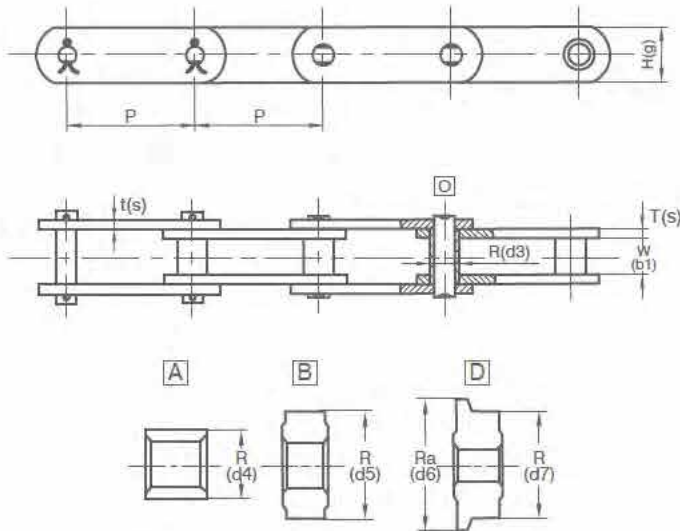
P	W	Z	dp	de mm				dm	A	B	d	Kg
				Q min Rφ25	A min Rφ36	B min Rφ70	D min Rφ70/86					
100	37	6	200.00	219	220	227	227	100	60	34	40	11.5
		8	261.31	281	282	289	289	100	60	34	40	15.2
		10	323.61	344	345	352	352	110	65	34	40	23.2
		12	386.37	407	408	415	415	120	70	34	40	33.0
125	37	6	250.00	270	271	278	278	110	65	34	40	16.8
		8	326.64	347	348	355	355	110	65	34	40	23.6
		10	404.51	425	426	433	433	120	70	34	40	35.9
		12	480.96	503	504	511	511	160	80	34	40	57.5
160	37	6	320.00	338	339	446	446	135	80	34	40	31.2
		8	418.10	438	439	446	446	135	80	34	40	40.0
		10	517.78	538	539	546	546	145	85	34	40	60.3
		12	618.19	638	639	646	646	155	90	34	40	85.0
200	37	6	400.00	419	420	427	427	150	85	34	40	46.8
		8	522.62	543	544	551	551	150	85	34	40	65.0
		10	647.22	667	668	675	675	155	90	34	40	92.5
		12	772.74	793	794	801	801	170	100	34	50	131.9
250	37	6	500.00	517	518	525	525	155	90	34	40	70.6
		8	653.28	673	674	681	681	155	90	34	40	94.1
		10	809.03	829	830	837	837	180	105	34	50	145.8
		12	965.93	986	987	994	994	200	120	34	50	200.0

Sprockets - Chain

M224

Conveyor chains (metric series)

ISO 1997/I-1976



M 224

(mm)

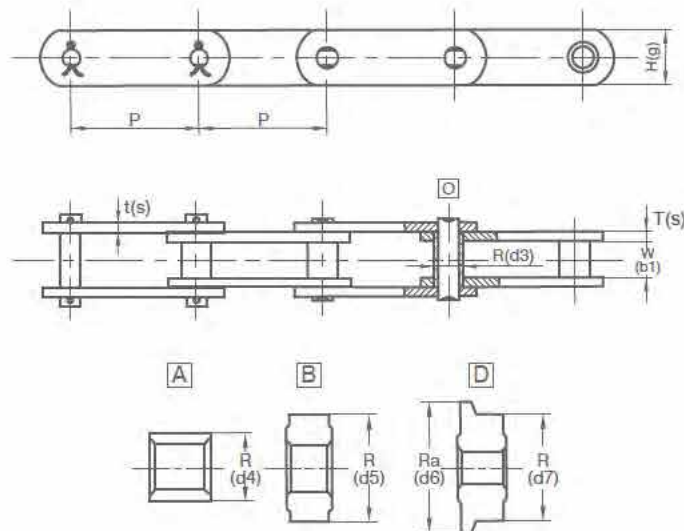
P	W	Z	dp	de mm				dm	A	B	d	Kg
				Q min Rφ30	A min Rφ42	B min Rφ85	D min Rφ85/100					
125	43	6	250.00	274	275	284	284	110	65	39	40	21.0
		8	326.64	351	352	361	361	110	65	39	40	26.4
		10	404.51	429	430	439	439	120	70	39	40	40.4
		12	480.96	507	508	517	517	130	80	39	40	57.0
160	43	6	320.00	342	343	352	352	135	80	39	40	31.2
		8	418.10	442	443	452	452	135	80	39	40	44.7
		10	517.78	542	543	552	552	145	85	39	40	67.7
		12	618.19	642	643	652	652	155	90	39	40	95.7
200	42	6	400.00	426	424	433	433	145	85	39	40	55.3
		8	522.62	547	548	557	557	145	85	39	40	68.9
		10	647.22	671	672	681	681	165	90	39	40	105.3
		12	772.74	797	798	807	807	170	100	39	50	148.5
250	43	6	500.00	521	522	531	531	155	90	39	40	76.5
		8	653.28	677	678	687	687	155	90	39	40	106.1
		10	809.03	833	834	843	843	180	105	39	50	164.1
		12	965.93	990	991	1000	1000	220	120	39	050	235.2
315	43	6	630.00	651	652	661	661	180	105	39	50	116.5
		8	823.13	847	848	859	859	180	105	39	50	169.4
		10	1019.37	1044	1045	1054	1054	180	115	39	50	255.3
		12	1217.07	1241	1242	1251	1251	210	125	39	50	366.0

Sprockets - Chain

M315

Conveyor chains (metric series)

ISO 1997/I-1976



M 315

(mm)

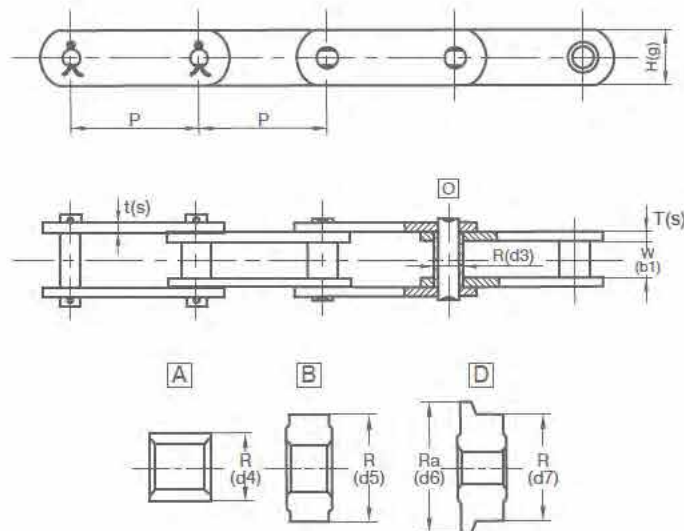
P	W	Z	dp	de mm				dm	A	B	d	Kg
				Q min Rφ30	A min Rφ50	B min Rφ100	D min Rφ100/120					
160	48	6	320.00	346	348	358	358	185	115	43	50	36.8
		8	418.10	446	448	458	458	185	115	43	50	58.9
		10	517.78	546	548	558	558	485	115	43	60	81.9
		12	618.19	646	648	658	658	200	115	43	60	113.7
200	48	6	400.00	427	428	438	438	185	115	43	60	69.6
		8	522.62	551	553	563	563	185	115	43	60	83.7
		10	647.22	675	677	687	687	185	115	43	60	120.6
		12	772.24	801	803	813	813	200	115	43	60	168.8
250	48	6	500.00	525	527	537	537	210	115	43	60	95.8
		8	653.28	681	683	693	693	210	115	43	60	126.8
		10	809.03	837	839	849	849	210	115	43	60	185.3
		12	965.93	994	996	1006	1006	220	115	43	60	261.3
315	48	6	630.00	655	657	667	667	220	125	43	60	135.1
		8	823.13	851	853	863	863	220	125	43	60	195.7
		10	1019.37	1048	1050	1060	1060	220	125	43	60	288.5
		12	1217.07	1245	1247	1257	1257	240	125	43	60	409.6

Sprockets - Chain

M450

Conveyor chains (metric series)

ISO 1997/I-1976



M 450

(mm)

P	W	Z	dp	de mm				dm	A	B	d	Kg
				Q min Rφ42	A min Rφ60	B min Rφ120	D min Rφ120/140					
200	56	6	400.00	432	435	447	447	200	125	50	60	68.5
		8	522.62	556	559	571	571	200	125	50	60	97.8
		10	647.22	680	683	695	695	200	125	50	60	44.2
		12	772.74	806	809	821	821	230	140	50	60	204.6
250	56	6	500.00	530	533	545	545	220	125	50	60	110.5
		8	653.28	686	689	701	701	220	125	50	60	147.3
		10	809.03	842	845	857	857	220	125	50	60	215.3
		12	965.93	999	1002	1014	1014	250	140	50	60	310.0
315	56	6	630.00	660	663	675	675	250	125	50	60	185.6
		8	823.13	856	859	871	871	250	125	50	60	228.5
		10	1019.37	1053	1056	1068	1068	250	125	50	60	336.3
		12	1217.07	1250	1253	1265	1265	280	140	50	60	482.0
400	56	6	800.00	829	832	844	844	280	140	50	60	298.5
		8	1045.24	1078	1081	1093	1093	280	140	50	60	366.1
		10	1294.44	1328	1331	1343	1343	280	140	50	60	540.0
		12	1545.48	1579	1580	1594	1594	320	160	50	60	777.3

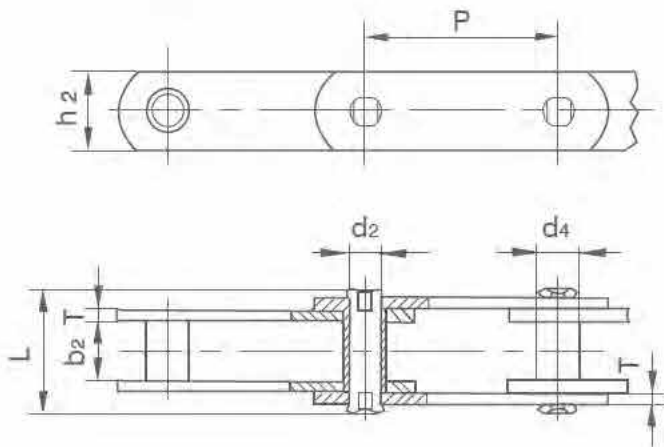
Sprockets - Chain

ISO 1997/ I-2000

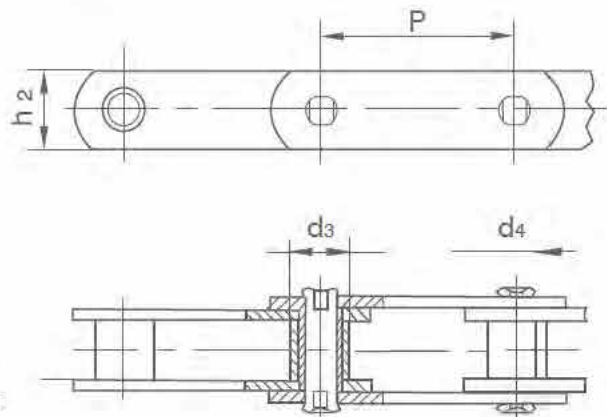
Conveyor chains (metric series)

CHAINS

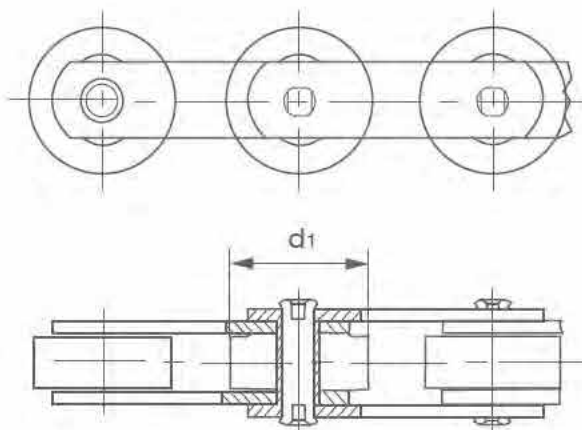
without roller



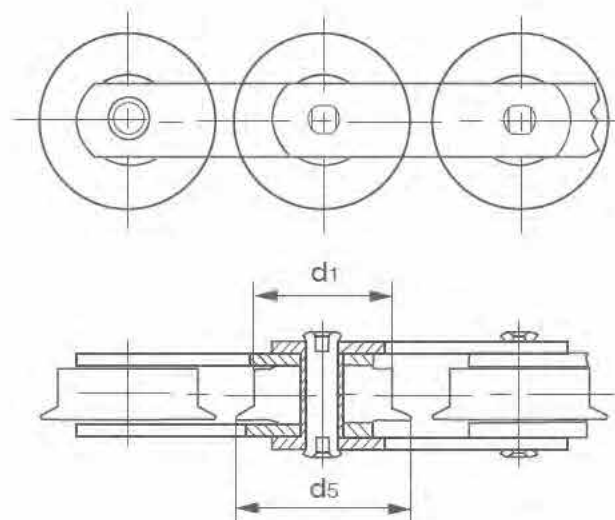
with A type small roller



with B and C type large roller



with F and G type flanged roller



Sprockets - Chain

ISO 1977/1-2000

Conveyor chains(metric series)

ISO Chain No.	Pitch								Roller diameter			Bush diameter
	P								d1 max	d3 max	d5 max	d4 max
	mm								mm	mm	mm	mm
M20	*40.0	50.0	63.0	80.0	100.0	125.0	160.0		25.0	12.50	35.00	9.0
M28	*50.0	63.0	80.0	100.0	125.0	160.0	200.0		30.0	15.00	40.00	10.0
M40	63.0	80.0	100.0	125.0	160.0	200.0	250.0		36.0	18.00	45.00	12.5
M56	*63.0	80.0	100.0	125.0	160.0	200.0	250.0		42.0	21.00	55.00	15.0
M80	80.0	100.0	125.0	160.0	200.0	250.0	315.0		50.0	25.00	65.00	18.0
M112	*80.0	100.0	125.0	160.0	200.0	250.0	315.0	400.0	60.0	30.00	75.00	21.0
M160	*100.0	125.0	160.0	200.0	250.0	315.0	400.0	500.0	70.0	36.0	90.00	25.0
M224	*125.0	160.0	200.0	250.0	315.0	400.0	500.0	630.0	85.0	42.00	105.00	30.0
M315	*160.0	200.0	250.0	315.0	400.0	500.0	630.0		100.0	50.00	125.00	36.0
M450	200.0	250.0	315.0	400.0	500.0	360.0	800.0		120.0	60.00	150.00	42.0

*Chain only have bush and small roller

ISO Chain No.	Width between inner plates	Pin diameter	Pin length	Plate depth	Plate thickness	Ultimate tensile strength	Average tensile strength
	b1 min	d2 max	L max	h2 max	T max	Q min	Q0
	mm	mm	mm	mm	mm	kN	kN
M20	15.0	6.0	35.0	19.0	2.5	20.0	25.0
M28	17.0	7.0	40.0	21.0	3.0	28.0	35.0
M40	19.0	8.5	45.0	26.0	3.5	40.0	50.0
M56	23.0	10.0	52.0	31.0	4.0	56.0	70.0
M80	27.0	12.0	62.0	41.0	5.0	80.0	100.0
M112	31.0	15.0	73.0	51.0	6.0	112.0	140.0
M160	36.0	18.0	85.0	62.0	7.0	160.0	200.0
M224	42.0	21.0	98.0	72.0	8.0	224.0	280.0
M315	47.0	25.0	112.0	82.0	10.0	315.0	393.7
M450	55.0	30.0	135.0	103.0	12.0	450.0	562.5