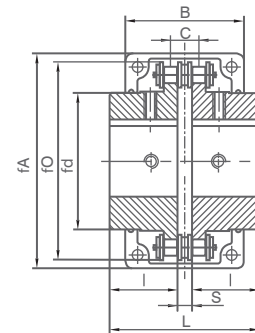


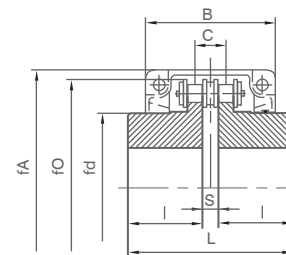
Chain Coupling

Chain coupling is composed of a duplex roller chain and two sprockets. The function of connection and detachment is done by the joint of chain. It has the characteristic of simplicity, high efficiency, easy-on and easy-off.

It also has an aluminium cover to prevent dust and protect the lubricant and make the life of chain coupling a longer lasting one.



Catalog 3012-12022



Catalog 16018-24026

Chain COUPLING

Catalog	Applicable Range of Shaft	Pilot	A	d	O	L	I	S	B	C	Max Angular (Degree)	Bolt	Max Torque (Nm)	Max Revolution (rpm)	Moment Of Inertia (kg.cm ²)	Required Amount of Grease(kg)	G (kg)
CR3012	12-16	12	69	25	45	64.8	29.8	5.2	63	10.2	1°	M6	190	5000	3.7	0.10	0.4
CR4012	12-22	12	77	33	62	79.4	36.0	7.4	72	14.4		M6	249	4800	5.5	0.10	0.8
CR4014	12-28	12	84	43	69	79.4	36.0	7.4	75	14.4		M6	329	4800	9.7	0.13	1.1
CR4016	14-32	14	92	48	77	87.4	40.0	7.4	75	14.4		M6	419	4800	14.4	0.17	1.4
CR5014	15-35	14	101	53	86	99.7	45.0	9.7	85	18.1		M8	620	3600	28.0	0.22	2.2
CR5016	16-40	16	111	60	93	99.7	45.0	9.7	85	18.1		M8	791	3600	37.0	0.26	2.7
CR5018	16-45	16	122	70	106	99.7	45.0	9.7	85	18.1		M8	979	3000	56.3	0.36	3.8
CR6018	20-56	20	142	85	127	123.5	56.0	11.5	105	22.8		M10	1810	2500	137.3	0.50	6.2
CR6020	20-60	20	158	98	139	123.5	56.0	11.5	105	22.8		M10	2210	2500	210.2	0.60	7.8
CR6022	20-71	20	168	110	151	123.5	56.0	11.5	117	22.8		M10	2610	2500	295.0	0.70	10.4
CR8018	20-80	20	190	110	169	141.2	63.0	15.2	129	29.3		M12	3920	2000	520.0	0.90	12.7
CR8020	20-90	20	210	121	185	145.2	65.0	15.2	137	29.3		M12	4800	2000	812.4	1.10	16.0
CR8022	20-100	20	226	140	202	157.2	71.0	15.2	137	29.3		M12	5640	1800	1110.0	1.20	20.2
CR10020	25-110	25	281	160	233	178.8	80.0	18.8	153	35.8		M12	8400	1800	2440.0	1.80	33.0
CR12018	35-125	35	307	170	256	202.7	90.0	22.7	181	45.4		M12	12700	1500	3940.0	3.20	47.0
CR12022	35-140	35	357	210	304	222.7	100.0	22.7	181	45.5		M12	18300	1250	7810.0	4.40	72.0
CR16018	63-160	35	375	228	340	254.1	112.0	30.1	240	58.5		M16	26400	1100	14530.0	7.20	108.0
CR16022	80-200	70	440	279	405	310.1	140.0	30.1	245	58.5		M16	38100	1000	32220.0	9.90	187.0
CR20018	82-205	75	465	289	425	437.5	200.0	37.5	285	71.6		M20	54100	800	50980.0	11.80	286.0
CR20022	100-255	90	545	363	506	477.5	220.0	37.5	300	71.6		M20	77800	600	111100.0	15.80	440.0
CR24022	120-310	110	650	448	607	650.0	302.5	45	340	87.8	M20	137000	600	310000.0	21.90	869.0	
CR24026	150-360	140	745	526	704	700.0	327.5	45	350	87.8	M20	186000	500	598500.0	28.10	1260.0	

Keyway dimensions conform to DIN 6885, JIS B 1310-1976, UNI 6604-1969, GB 1095-1979 standards.