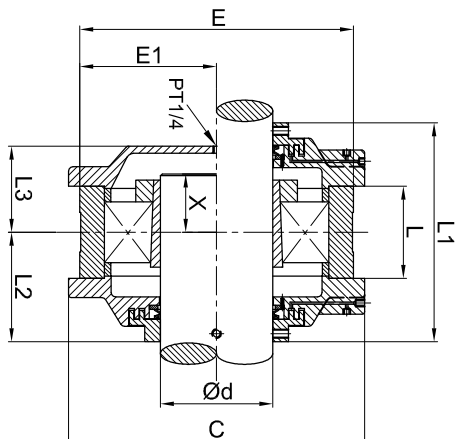
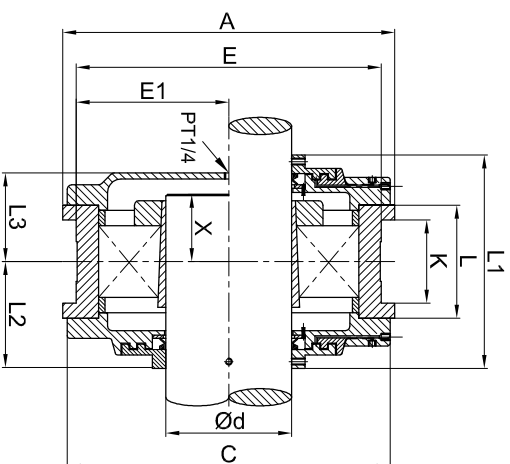


# TYPE:THM508-3148LST/STB

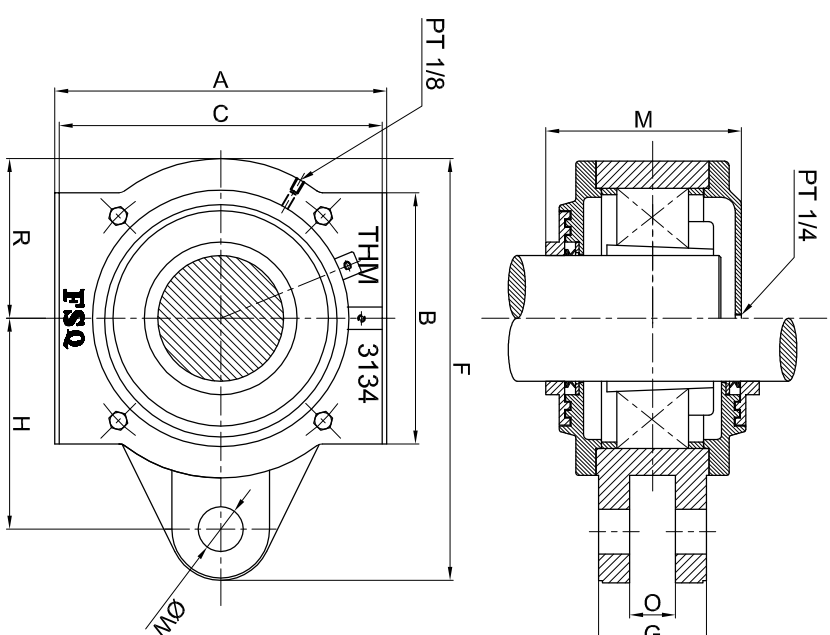
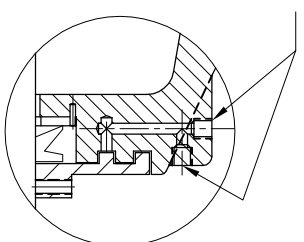
SEAL  
LUBE POINTS  
(TYP)



TYPE: 508~528  
3136~3138



TYPE:530~532  
3134,3140~3148



HOUSING Reference	Ød	A	B	C	E	E1	F	G	H	K	L	L1	L2	L3	M	O	R	ØW	X	Bearing NO.	Adaptor Sleeve	Locating Ring Number	QTY	V-Ring NO.
	mm																							
THM508	35	-	89	124	104	52	154	51	76	-	54	114	57	41.5	98.5	29	53	20	24	22208K	H308	SR80x10	1	V35-A
THM509	40	-	89	124	104	52	154	51	76	-	54	114	57	41.5	98.5	29	53	20	25	22209K	H309	SR80x8	1	V40-A
THM510	45	-	100	140	120	60	180	51	90	-	54	120	60	45	105	30	65	20	26	22210K	H310	SR90x10	1	V45-A
THM511	50	-	100	140	120	60	180	51	90	-	54	120	60	45	105	30	65	20	27	22211K	H311	SR100x8	1	V50-A
THM512	55	-	115	170	150	75	215	60	110	-	68	130	65	50	115	30	80	20	28	22212K	H312	SR110x10	1	V55-A
THM513	60	-	115	170	150	75	215	60	110	-	68	135	67.5	50	117.5	30	80	20	32	22213K	H313	SR120x10	1	V60-A
THM515	65	-	115	185	165	82.5	240	65	120	-	68	155	77.5	55	132.5	30	90	20	32	22215K	H315	SR130x10	1	V65-A
THM516	70	-	140	220	195	97.5	265	75	135	-	78	164	82	60	142	40	100	20	36.5	22216K	H316	SR140x10	1	V70-A
THM517	75	-	140	220	195	97.5	265	75	135	-	78	152	76	60	136	40	100	20	41	22217K	H317	SR150x10	1	V75-A
THM518	80	-	150	220	195	97.5	275	75	140	-	78	159	79.5	67.5	147	40	105	20	44.5	22218K	H318	SR160x12	1	V80-A
THM520	90	-	150	250	210	105	320	90	165	-	93	195	97.5	72.5	170	45	120	24	49.5	22220K	H320	SR180x12.1	2	V90-A
THM522	100	-	160	280	240	120	352	90	180	-	93	208	104	79	183	45	127	24	54	22222K	H322	SR200x13.5	2	V100-A
THM524	110	-	216	286	255	127.5	384	94	200	-	97	210	105	82.5	187.5	45	140	35	59	22224K	H3124	SR215x14	2	V110-A
THM526	115	-	230	300	270	135	406	100	210	-	102	226	93	92	205	45	146	38	65	22226K	H3126	SR230x13	2	V120-A
THM528	125	-	224	330	305	152.5	425	100	220	-	103	244	122	96	218	50	155	40	65	22228K	H3128	SR250x15	2	V130-A
THM530	135	370	280	360	330	165	470	120	235	93	123	257	128.5	105.5	234	51	178	50	75	22230K	H3130	SR270x16.5	2	V140-A
THM532	140	370	280	360	340	170	470	120	235	93	126	238	119	99	218	51	178	50	75	22232K	H3132	SR290x17	2	V140-A
THM3134	150	370	280	360	330	165	470	120	235	93	127	251	125.5	92	217.5	51	178	50	75	23134K	OH3134	SR280x10	2	V150-A
THM3136	160	-	290	450	400	200	560	125	285	-	127	262	131	96	227	55	210	50	80	23136K	OH3136	SR300x10	2	V160-A
THM3138	170	-	290	450	400	200	560	125	285	-	127	281	140.5	113	253.5	55	210	50	85	23138K	OH3138	SR320x10	2	V170-A
THM3140	180	450	320	440	410	205	595	140	315	127	142	313	156.5	118	274.5	66	215	50	90	23140K	OH3140	SR340x10	2	V180-A
THM3144	200	480	340	470	440	220	620	140	325	127	150	359	179.5	135	314.5	66	230	60	95	23144K	OH3144	SR370x10	2	V200-A
THM3148	220	510	380	500	470	235	655	140	340	127	158	353	176.5	131.5	308	66	245	60	100	23148K	OH3148	SR400x10	2	V220-A