

Slide Pack Model FBL

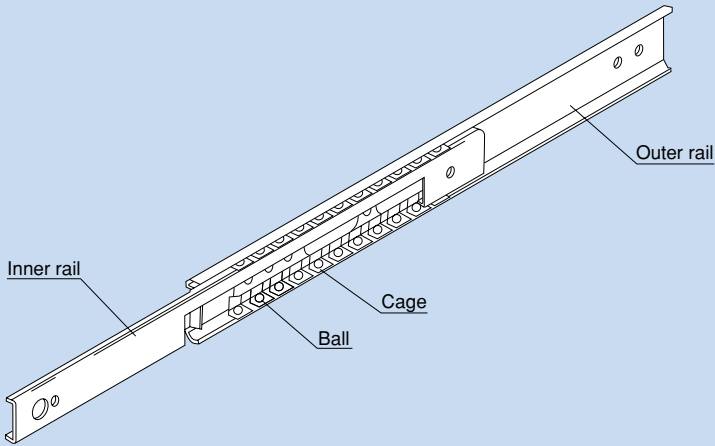


Fig. 1 Structure of Slide Pack Model FBL

● Structure and Features

Slide Pack model FBL is a thin, compact and ultra-low price slide unit for finite motion. It has two rows of balls placed between an inner rail made of a steel sheet roll-formed with precision and an outer rail. The balls are evenly spaced by a cage press-molded with precision, thus eliminating friction between balls and achieving a smooth slide mechanism.

● Unit Type That Allows Easy Installation

Since the clearance and the motion of the slide unit are optimally adjusted, simply mounting the unit onto the base or the table using screws will achieve a slide mechanism with virtually no running noise.

● Thin and Compact

Since the sectional shape is thinly designed, this slide pack only requires a small side space for installation. In addition, a desired number of slide pack units can be installed in parallel according to the load conditions.

● Maintenance-free Operation

Since the slide rail is treated with zinc plating, it is highly resistant to corrosion. The slide unit contains grease, eliminating the need for further grease replenishment in normal use.

Applications

Model FBL can be used in a wide range of applications such as photocopiers, measuring instruments, telecommunication equipment, automatic vending machines and various types of office equipment.

Types of Features

Models FBL 27S and 35S



The basic unit type designed to have a stroke length approximately 70% of the overall rail length.

Models FBL 27D and 35D



A two-stage, double-unit type that allows the stroke length to exceed the overall rail length.

Models FBL 35E and 55E



A two-stage slide unit type that allows the stroke length to exceed the overall rail length in a limited space.

Model FBL 56H



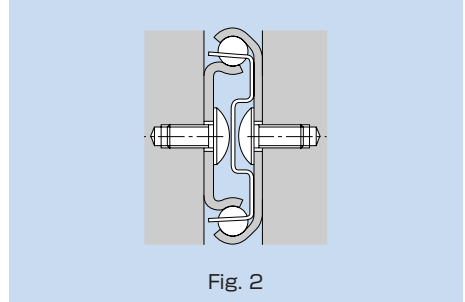
A two-stage, high-load slide unit type with an even greater permissible load.

● Installation

● Mounting Screws of the Slide Rail

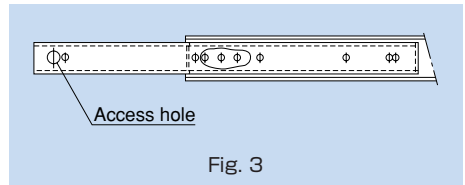
The slide rail is to be mounted using M4 screws. Since the mounting space is small as shown in Fig. 2, we recommend using truss head screws or binder screws.

Note: For model FBL 35E, use M3 truss head screws or binder screws.



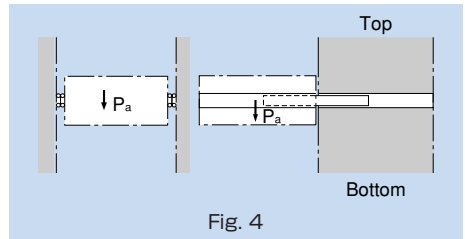
● Attaching the Slide Rail

While keeping the maximum stroke, mount the outer rail at the section where the inner rail and the outer rail overlap, slide the inner rail backward, and then secure the rail using a screw through the access hole.



● Mounting Orientation

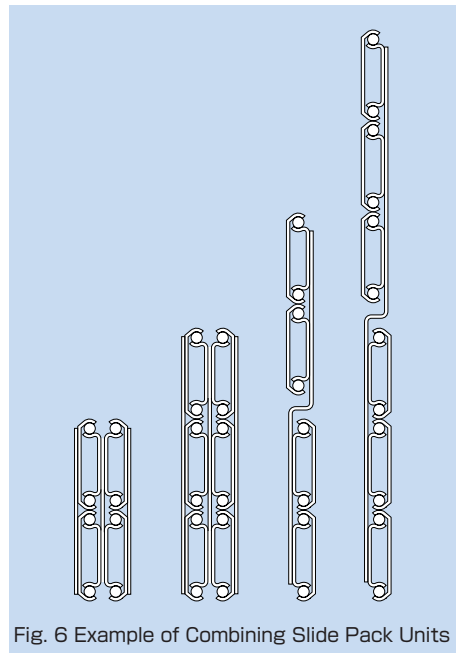
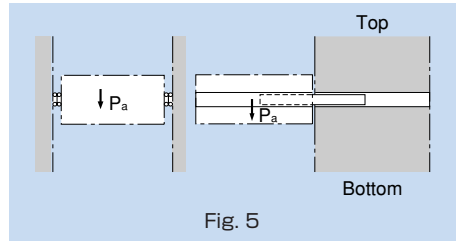
For use other than with the mounting orientation shown in Fig. 4, contact **THK**.



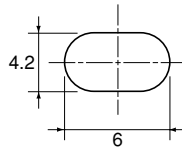
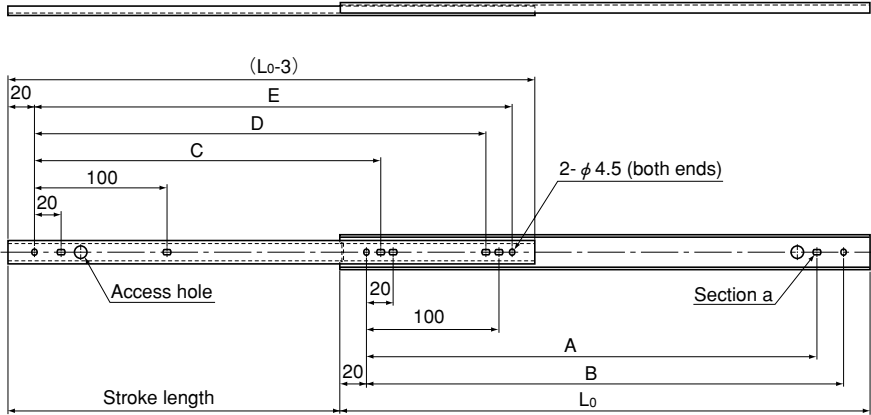
Static Permissible Load

The static permissible load of model FBL varies with rail lengths and is indicated in the corresponding dimensional table. This value represents the static permissible load in the direction "P_a" per pair of slide pack units in the middle of the rail length at the maximum stroke. If a load other than in the direction "P_a" is applied, contact **THK** .

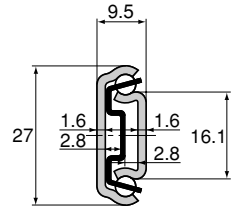
For the traveling section of a heavy object, **THK** also manufactures a special type stacking basic units as shown in Fig. 6 at your request.



Model FBL 27S



Magnified view of section a



Unit: mm

Rail length L_0 (± 0.8)	Stroke length (± 3)	Mounting hole dimensions					Permissible load N/pair	Mass Kg/pair
		A	B	C	D	E		
200	135	140	160	—	140	160	260	0.32
250	185	190	210	150	190	210	240	0.4
300	222	240	260	190	240	260	240	0.48
350	260	290	310	225	290	310	230	0.56
400	297	340	360	265	340	360	210	0.64
450	334	390	410	300	390	410	200	0.72
500	371	440	460	337	440	460	180	0.8

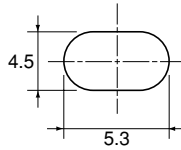
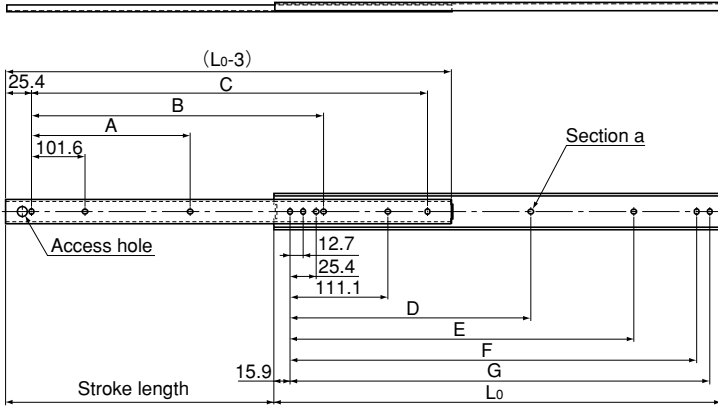
Model number coding

FBL27S +300L

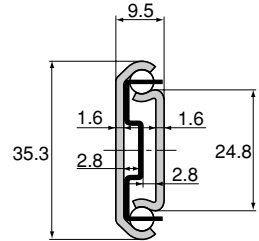
1

2

1 Model number 2 Overall rail length (in mm)



Magnified view of section a



Unit: mm

Rail length L_0 (± 0.8)	Stroke length (± 3)	Mounting hole dimensions							Permissible load N/pair	Mass Kg/pair
		A	B	C	D	E	F	G		
305	229	—	152.4	254	—	149.2	260.3	273	490	0.6
356	279	—	203.2	304.8	—	200	311.1	323.8	400	0.72
406	305	—	254	355.6	—	250.8	361.9	374.6	390	0.84
457	330	203.2	304.8	406.4	212.7	301.6	412.7	425.4	380	0.96
508	381	228.6	355.6	457.2	238.1	352.4	463.5	476.2	330	1.04
559	406	254	406.4	508	263.5	403.2	514.3	527	320	1.16
610	432	279.4	457.2	558.8	288.9	454	565.1	577.8	310	1.24
660	483	304.8	508	609.6	314.3	504.8	615.9	628.6	280	1.36
711	508	330.2	558.8	660.4	339.7	555.6	666.7	679.4	270	1.48

Model number coding

FBL35S +457L

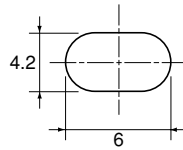
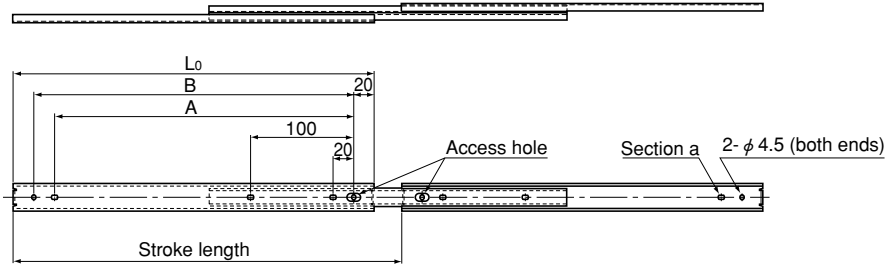
1

2

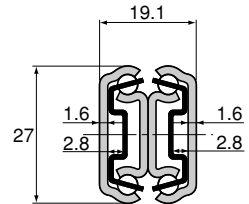
1 Model number 2 Overall rail length (in mm)

Selecting a Model Number Refer to the "THK General Catalog - Technical Descriptions of the Products," provided separately

Model FBL 27D



Magnified view of section a



Unit: mm

Rail length L_0 (± 0.8)	Stroke length (± 3)	Mounting hole dimensions		Permissible load N/pair	Mass Kg/pair
		A	B		
200	229	140	160	370	0.64
250	276	190	210	360	0.8
300	327	240	260	350	0.96
350	376	290	310	330	1.12
400	426	340	360	310	1.28
450	475	390	410	290	1.46
500	524	440	460	280	1.6

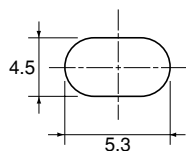
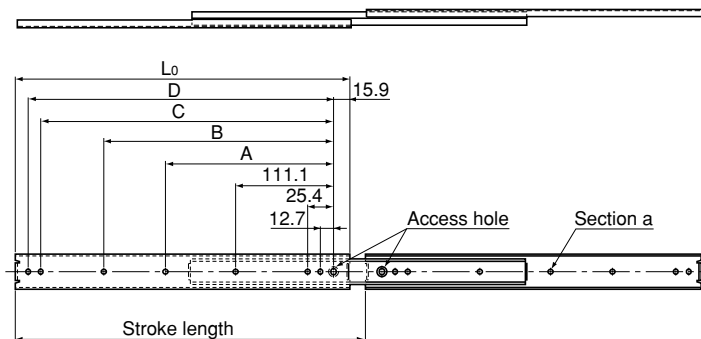
Model number coding

FBL27D +200L

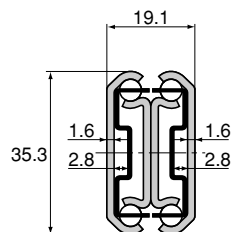
1

2

1 Model number 2 Overall rail length (in mm)



Magnified view of section a



Unit: mm

Rail length L_0 (± 0.8)	Stroke length (± 3)	Mounting hole dimensions				Permissible load N/pair	Mass Kg/pair
		A	B	C	D		
305	327	—	149.2	260.3	273	588	1.28
356	378	—	200	311.1	323.8	578	1.48
406	429	—	250.8	361.9	374.6	559	1.72
457	480	212.7	301.6	412.7	425.4	549	1.96
508	530	238.1	352.4	463.6	476.2	529	2.12
559	581	263.5	403.2	514.3	527	500	2.4
610	632	288.9	454	565.1	577.8	480	2.56
660	683	314.3	504.8	615.9	628.6	461	2.8
711	734	339.7	555.6	666.7	679.4	441	3

Model number coding

FBL35D +356L

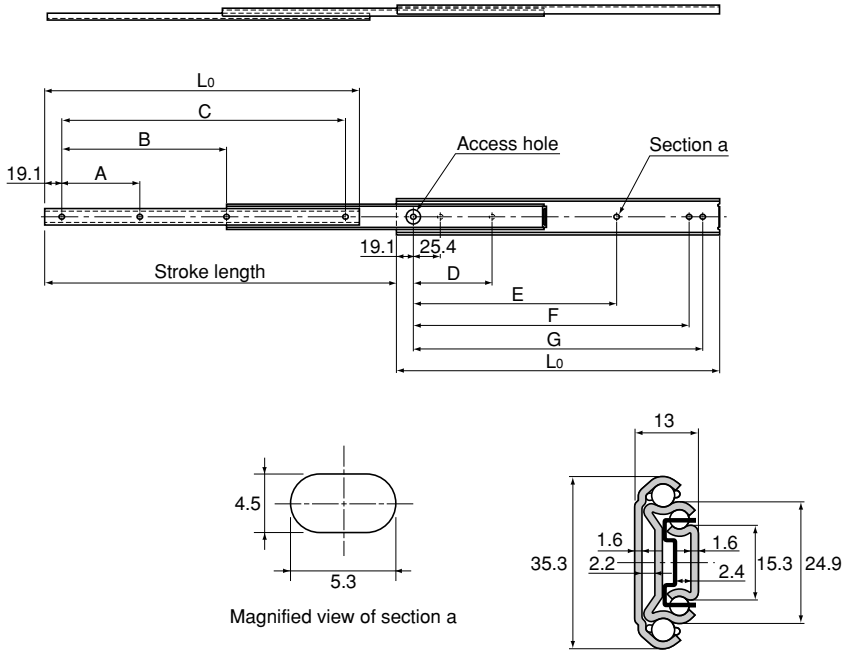
1

2

1 Model number 2 Overall rail length (in mm)

Selecting a Model Number Refer to the "THK General Catalog - Technical Descriptions of the Products," provided separately

Model FBL 35E



Unit: mm

Rail length L_0 (± 0.8)	Stroke length (± 3)	Mounting hole dimensions							Permissible load N/pair	Mass Kg/pair
		A	B	C	D	E	F	G		
305	330	76.2	—	154.9	76.2	190.5	241.3	266.7	290	0.6
356	381	127	—	266.7	88.9	215.9	292.1	317.5	280	0.7
406	432	152.4	—	317.5	127	241.3	342.9	368.3	270	0.9
457	483	177.8	—	368.3	127	292.1	393.7	419.1	250	1.1
508	533	152.4	342.9	419.1	152.4	317.5	444.5	469.9	240	1.3

Note When mounting model FBL 35E, use M3 truss head screws or binder screws.

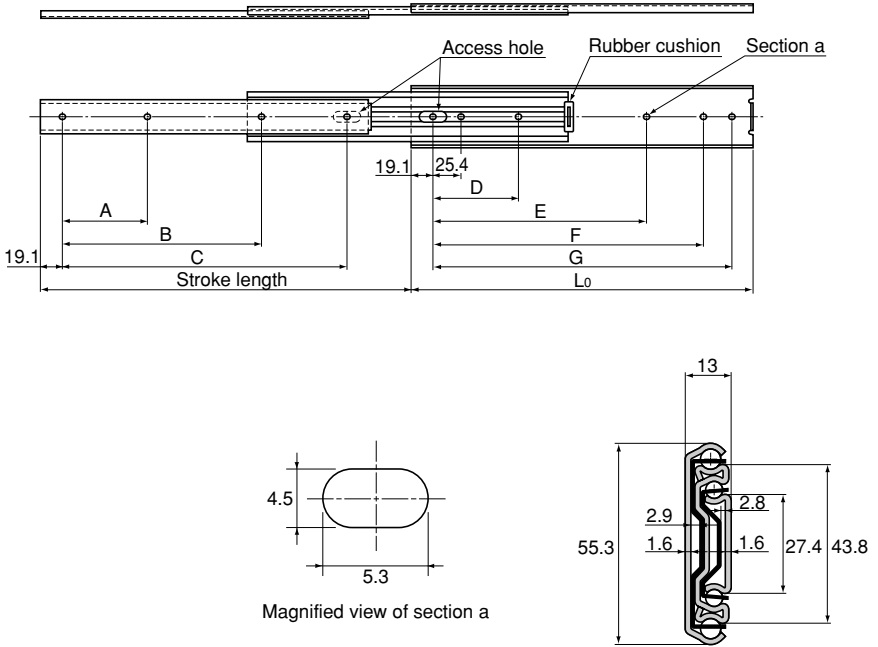
Model number coding

FBL35E +406L

1

2

1 Model number 2 Overall rail length (in mm)



Unit: mm

Rail length L ₀ (±0.8)	Stroke length (±3)	Mounting hole dimensions							Permissible load N/pair	Mass Kg/pair
		A	B	C	D	E	F	G		
305	330	76.2	177.8	254	76.2	190.5	241.3	266.7	620	1.44
356	381	101.6	203.2	304.8	88.9	215.9	292.1	317.5	620	1.68
406	432	127	228.6	355.6	127	241.3	342.9	368.3	610	1.96
457	483	127	279.4	406.4	127	292.1	393.7	419.1	610	2.24
508	533	152.4	304.8	457.2	152.4	317.5	444.5	469.9	600	2.44
559	584	177.8	330.2	508	177.8	342.9	495.3	520.7	580	2.72
610	635	177.8	381	558.8	177.8	393.7	546.1	571.5	570	3
660	686	203.2	406.4	609.6	203.2	419.1	596.9	622.3	550	3.24
711	737	228.6	431.8	660.4	228.6	444.5	647.7	673.1	530	3.48
762	787	228.6	457.2	711.2	228.6	469.9	698.5	723.9	500	3.72

Model number coding

FBL55E +711L

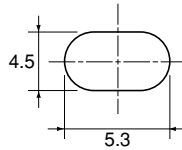
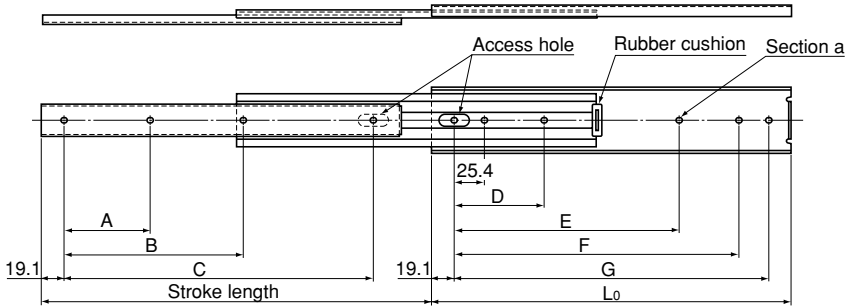
1

2

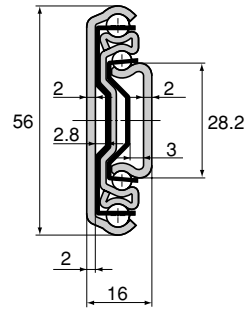
1 Model number 2 Overall rail length (in mm)

Selecting a Model Number Refer to the "THK General Catalog - Technical Descriptions of the Products," provided separately

Model FBL 56H



Magnified view of section a



Unit: mm

Rail length L_0 (± 0.8)	Stroke length (± 3)	Mounting hole dimensions							Permissible load N/pair	Mass Kg/pair
		A	B	C	D	E	F	G		
305	330	76.2	177.8	254	76.2	190.5	241.3	266.7	960	1.76
356	381	101.6	203.2	304.8	88.9	215.9	292.1	317.5	950	2.04
406	432	127	228.6	355.6	127	241.3	342.9	368.3	940	2.36
457	483	127	279.4	406.4	127	292.1	393.7	419.1	920	2.64
508	533	152.4	304.8	457.2	152.4	317.5	444.5	469.9	900	2.96
559	584	177.8	330.2	508	177.8	342.9	495.3	520.7	880	3.24
610	635	177.8	381	558.8	177.8	393.7	546.1	571.5	860	3.6
660	686	203.2	406.4	609.6	203.2	419.1	596.9	622.3	840	3.84
711	737	228.6	431.8	660.4	228.6	444.5	647.7	673.1	820	4.06
762	787	228.6	457.2	711.2	228.6	469.9	698.5	723.9	784	4.44

Model number coding

FBL56H +610L

1

2

1 Model number 2 Overall rail length (in mm)

Selecting a Model Number Refer to the "THK General Catalog - Technical Descriptions of the Products," provided separately