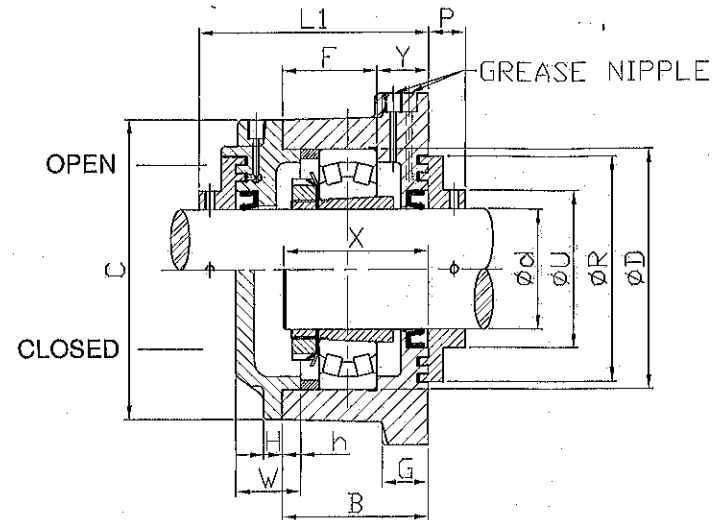
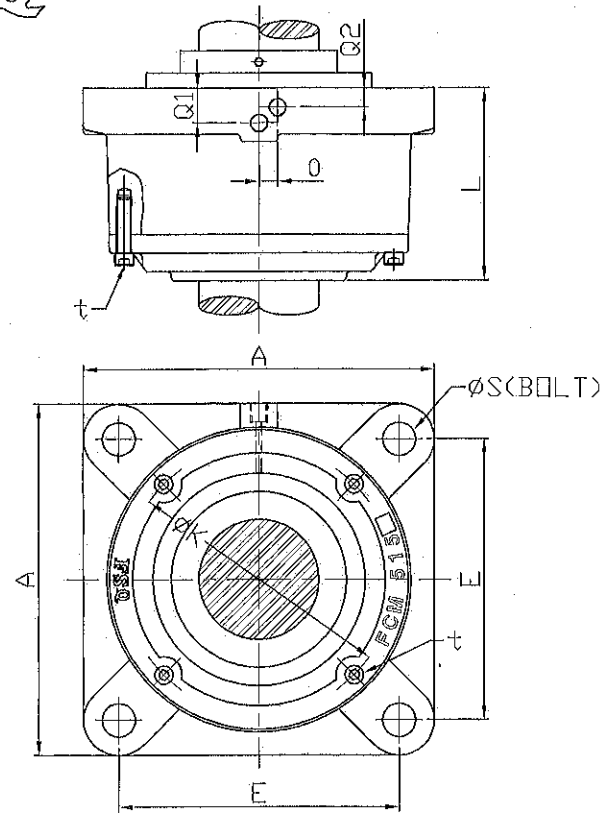


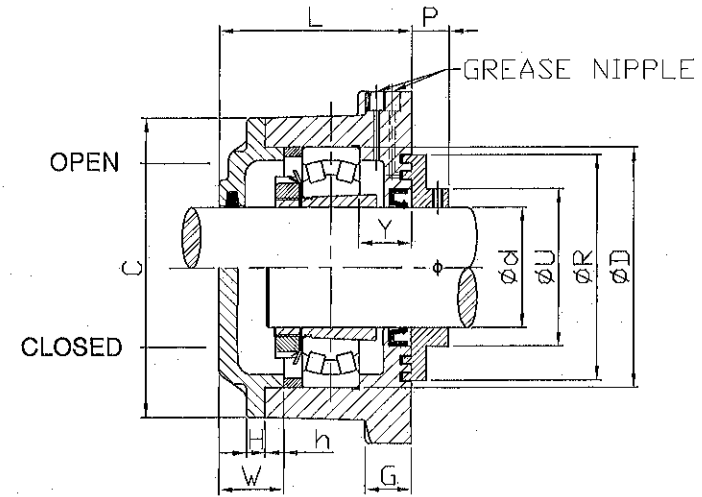
FSQ

TYPE: FCM500 series

STB.



LS taconite seal



Felt seal

HOUSING NO.	SHAFT DIA. Ø d	PLUMMER BLOCK BEARING HOUSINGS																				BOLT S	HEX. HEAD BOLT t	BEARING NO.	ADAPTER SLEEVE NO.	LOCATING RING		GREASE NIPPLE	
		A	B	C	D	E	F	G	H	h	W	K	L	L1	P	U	R	O	Q1	Q2	X					Y	NUMBER		QTY
FCM509	40	136	59	113	85	105	39	12	9	8	27	99	78	94	15	58	79	15	17	6	62	20	M12	M6 x 25	22209KW33C3	H309	85 x 8	1	PT 1/8
FCM510	45	142	63	118	90	108	42	15	9	9	28	104	82	98	14	63	85	15	17	9	60	21	M12	M6 x 25	22210KW33C3	H310	90 x 10	1	PT 1/8
FCM511	50	160	69	128	100	124	45	20	10	12	35	114	92	106	14	68	94	15	18	9	67	24	M16	M6 x 25	22211KW33C3	H311	100 x 8	1	PT 1/8
FCM512	55	170	71	142	110	130	51	20	10	13	36	126	94	108	14	71	94	15	14	9	71	20	M16	M6 x 25	22212KW33C3	H312	110 x 10	1	PT 1/8
FCM513	60	180	77	150	120	140	56	19	10	13	34	135	98	115	20	80	110	15	16	9	76	21	M16	M8 x 25	22213KW33C3	H313	120 x 12	1	PT 1/8
FCM515	65	190	79	162	130	152	51	25	10	10	35	146	104	124	20	85	122	18	19	10.5	78	28	M16	M8 x 25	22215KW33C3	H315	130 x 10	1	PT 1/8
FCM516	70	196	82	176	140	152	56	25	10	13	41	158	110	131	21	90	126	15	20	10	82	26	M16	M8 x 25	22216KW33C3	H316	140 x 10	1	PT 1/8
FCM517	75	210	86	188	150	170	60	25	12	14	42	169	114	134	20	96	138	17.5	20	10.5	88	26	M16	M8 x 25	22217KW33C3	H317	150 x 10	1	PT 1/8
FCM518	80	210	101	198	160	170	69	25	12	5	39	179	135	157	22	106	150	17.5	26	12	112	32	M16	M8 x 25	22218KW33C3	H318	160 x 12	2	PT 1/8
FCM520	90	250	114.2	220	180	198	80.3	30	12	10	41.8	200	146	168	22	116	161	17.5	26	13.5	123	33.9	M20	M8 x 25	22220KW33C3	H320	180 x 12.1	2	PT 1/8
FCM522	100	270	124	240	200	219	90	30	12	10	44	220	158	175	21	126	173	17.5	27	14.5	133	34	M20	M10 x 25	22222KW33C3	H322	200 x 13.5	2	PT 1/4
FCM524	110	280	134	262	215	230	99	30	12	13	45	235	166	190	21	134	186	18	23	13	141	35	M24	M12 x 40	22224KW33C3	H3124	215 x 14	2	PT 1/4
FCM526	115	305	139	280	230	250	100	35	12	10	46	255	175	196	21	145	192	18	30	15.5	150	39	M24	M12 x 40	22226KW33C3	H3126	230 x 13	2	PT 1/4
FCM528	125	330	152	300	250	270	110	37	12	12	49	275	189	212	23	160	206	20	33	16	162	42	M24	M12 x 40	22228KW33C3	H3128	250 x 15	2	PT 1/4
FCM530	135	350	160	320	270	290	118	40	12	12	51	295	199	222	23	170	218	20	33	16	170	42	M30	M12 x 40	22230KW33C3	H3130	270 x 16.5	2	PT 1/4
FCM532	140	370	166	340	290	300	126	45	12	12	54	315	208	231	23	180	230	20	33	16	180	40	M30	M12 x 40	22232KW33C3	H3132	290 x 17	2	PT 1/4