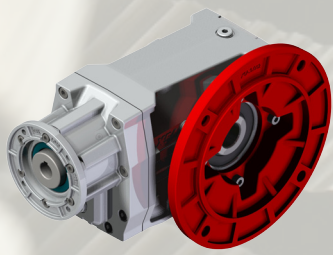
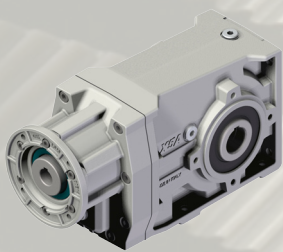


# Angletech

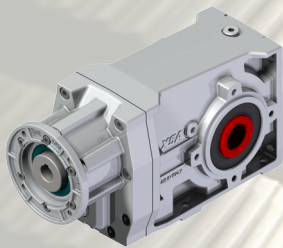
# Gears



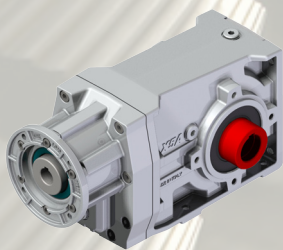
Special flanges



Special anticorrosive paint



Stainless steel output shaft



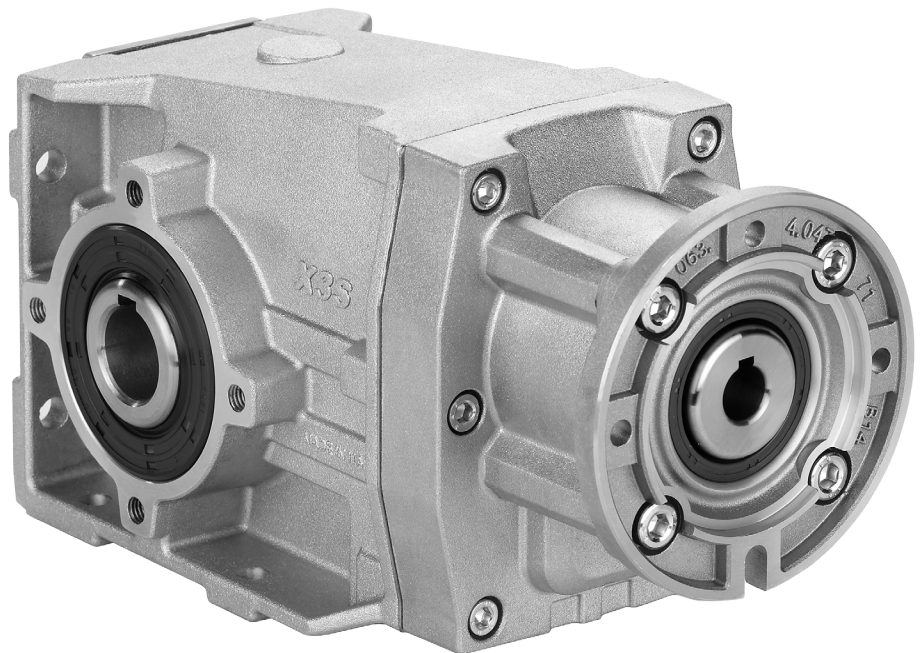
Special output shaft

- A very modern gearbox with ground gear.
- Flexible for specials, Atex, nema etc.
- Precise and reliable **quick deliveries**.
- Interchangeability with all the most important world manufacturer.
- Easy to stock/assemble even in parts.



MADE IN ITALY

**HIGH EFFICIENCY UP TO 95%**  
**ALL GROUND GEARS**



<http://www.hydromec.com>

## A very technical bevel gear design

# HYDRO-MEC

## Aluminum helical bevel gearbox

### Unique features

- **Removable inspection cover**  
Allows periodic inspection of gearing during routine maintenance.

- **Smooth surface**  
For easy cleaning, no ribs holding dust.

- **Oil seals**  
Two oil seals on request

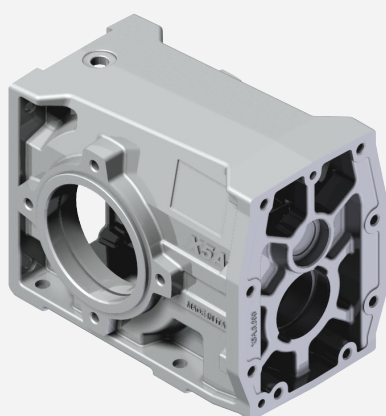
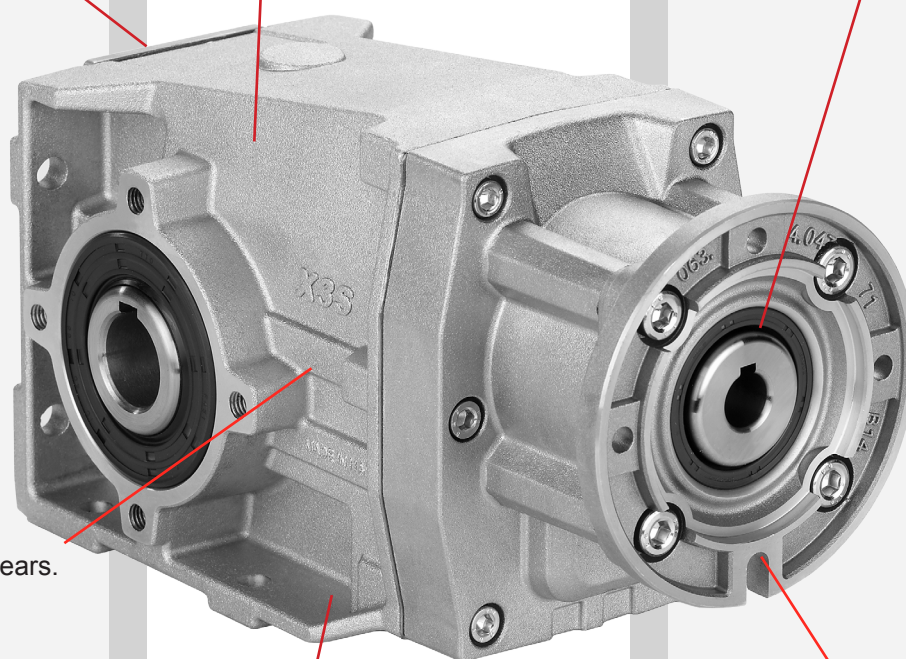
- **Gears**  
Hardened and ground gears.

- **Single-piece aluminum housing**  
Combines light weight with high tensile strength.  
Precision machined for alignment of bearings and gearing.

#### **Alloy housing**

Is vacuum impregnated (MIL-STD 276) for protection and sealing.  
No Secondary finish required but readily accepts paint.

- **Flange**  
Fully modular to IEC and compact integrated motor NEMA C flange.



**HIGH EFFICIENCY UP TO 95%  
ALL GROUND GEARS**

Distributed From:

**HYDRO-MEC**

Via della tecnica, 19  
36050 SOVIZZO (VI) ITALY

Tel. : +39 0444 551911  
Fax : +39 0444 536139  
hydromec@hydromec.com



PARTOUT PTY LTD A.B.N. 52 009 071 103

**STATEWIDE  
BEARINGS**