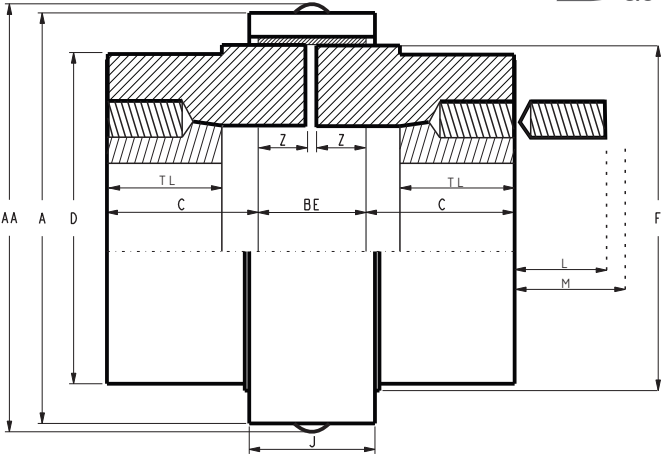
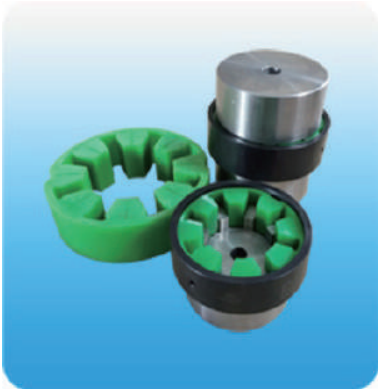


# SWBFLEX Coupling

**T<sub>B</sub><sup>aper</sup>**  
**B<sub>ore</sub>**



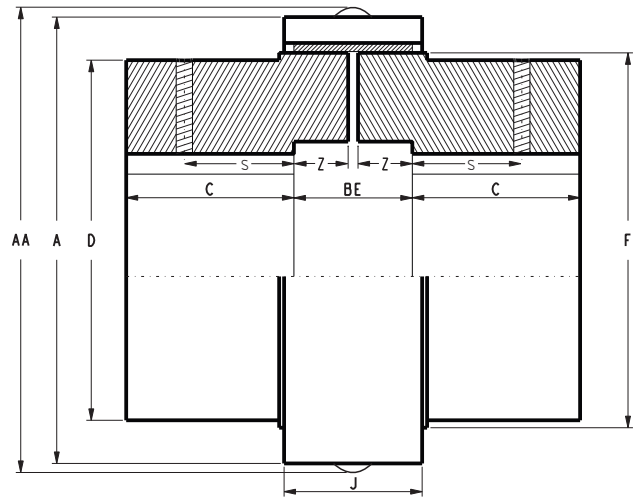
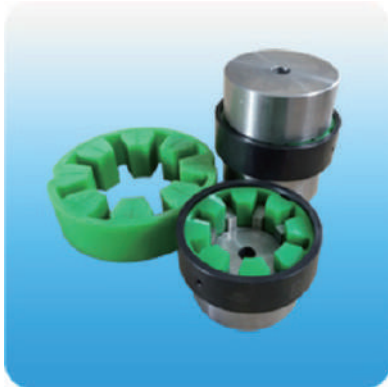
## SWBFLEX COUPLING

material:Steel

Hub P/No	Bushing Number	Torque Rating Nm	Kw per RPM	Max RPM	Max Bore	Min Bore	Gap	BE	Cover Fasteners	
									Size	Allen Wrench
5R T/L	1108	62	0.0065	4500	26	9	2	20.0	M4	M2.5
10R T/L	1210	130	0.0136	4500	32	11	2	24.0	M4	M2.5
20R T/L	1610	320	0.0335	4500	40	14	2	32.0	M6	M4
30R T/L	2012	520	0.0544	4500	48	14	2	36.0	M6	M4
40R T/L	2517	1030	0.1080	3600	63	16	5	47.0	M8	M5
50R T/L	3020	2500	0.2630	3000	75	24	5	61.0	M8	M5
60R T/L	4030	4000	0.4200	2500	100	40	5	75.4	M10	M6
70R T/L	4535	8000	0.8390	2100	110	55	5	84.4	M10	M6
80R T/L	5040	14200	1.4900	1800	125	70	6	96.8	M10	M6

Hub P/No	A	AA	B	C	D	F	H	J	L		M		TL
									Standard Hex Key	Short Hex Key	Standard Hex Key	Short Hex Key	
5R T/L	76.5	80.4	65.0	22.5	60.0	64.0	15.0	23.0	29	16	32	19	22
10R T/L	90.5	94.4	90.0	33.0	72.0	76.0	19.0	28.0	35	21	42	27	25
20R T/L	124.0	1130.1	98.0	33.0	92.0	102.0	25.0	37.1	35	21	42	27	25
30R T/L	143.0	149.1	120.0	42.0	105.0	118.0	29.0	41.6	40	24	51	35	32
40R T/L	177.0	185.0	139.0	46.0	130.0	150.0	34.0	53.0	42	26	58	42	45
50R T/L	224.0	232.0	171.0	55.0	178.0	190.0	46.0	67.2	46	31	69	53	51
60R T/L	267.0	278.0	245.4	85.0	209.6	228.0	60.2	67.0	61	42	105	86	76
70R T/L	310.0	321.0	264.4	90.0	250.8	270.0	69.7	75.0	67	50	121	104	89
80R T/L	370.0	381.0	304.8	104.0	270.0	328.0	83.4	85.0	72	59	134	123	102

# SWBFLEX Coupling



## SWBFLEX COUPLING

material:Steel

Hub P/No	Torque Rating Nm	Max RPM	Max Bore	A	AA	B	BE	C	D	F	H	J	S	Z	Gap	Cover Fasteners	
																Size	Allen Wrench
5R10 PB	62	4500	38	76.5	80.5	72.0	20.0	26	60.0	64	15.0	23.0	15.9	9.0	2	M4	M2.5
10R10 PB	130	4500	48	90.5	94.5	92.0	24.0	34	72.0	76	19.0	28.0	22.2	11.0	2	M4	M2.5
20R10 PB	320	4500	60	124.0	130.1	122.0	32.0	45	92.0	102	25.0	37.1	25.4	15.0	2	M6	M4
30R10 PB	520	4500	65	143.0	149.1	152.0	36.0	58	105.0	118	29.0	42.0	31.8	17.0	2	M6	M4
40R10 PB	1030	3600	85	177.0	185.0	181.0	47.0	67	130.0	150	34.0	54.5	41.3	21.0	5	M8	M5
50R10 PB	2500	3000	105	224.0	232.0	215.0	61.0	77	178.0	190	46.0	69.5	44.5	28.0	5	M8	M5
60R10 PB	4000	2500	135	267.0	278.0	275.4	75.4	100	209.6	228	60.2	67.0	44.5	35.2	5	M10	M6
70R10 PB	8000	2100	160	310.0	321.0	324.4	84.4	120	250.8	270	69.7	75.0	44.5	39.7	5	M10	M6
80R10 PB	15000	1800	190	370.0	381.0	376.8	96.8	140	270.0	328	83.4	85.0	44.5	45.4	6	M10	M6